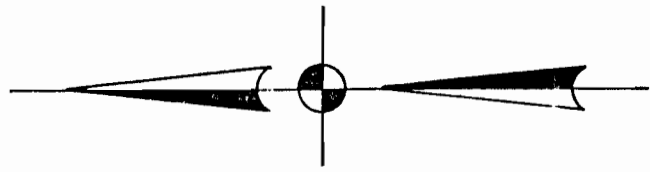


Application No. R-66701, 66702  
 Permit No. R 8900 47947

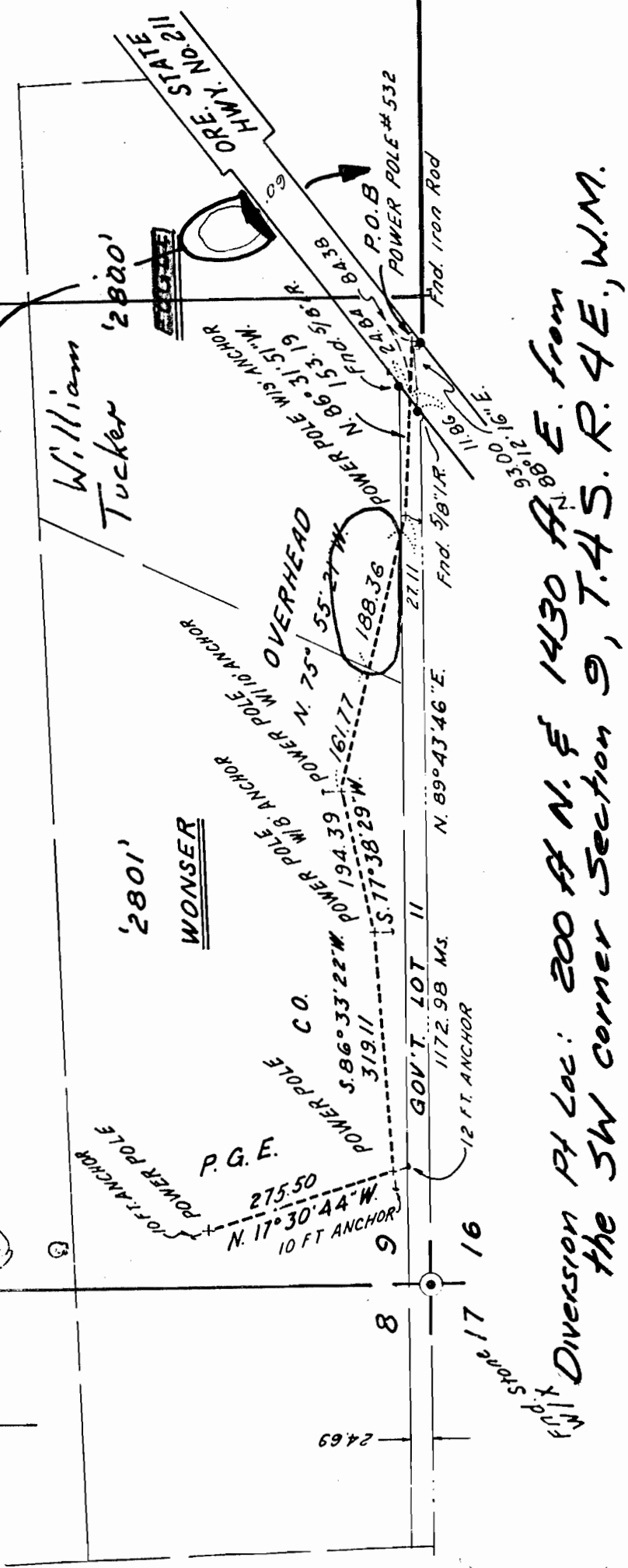
NOTE  
 Basis of Bearings: S/L sec. 9 Per P.S. 10647

**RECEIVED**  
 SEP 22 1983  
 WATER RESOURCES DEPT.  
 SALEM, OREGON

PORTLAND GENERAL ELECTRIC CO.		TO ACCOMPANY POWER LINE EASEMENT	
for DOROTHY WONSER		S.W. Sec. 9, T.4S. R.4E. W.M. CIBCK CO. ORE.	
SCALE 1" = 200'	DATE 8-17-79	DRAWN BY	TRACED BY
		B. WUNNA	B. WUNNA
		CHECKED	9 A.M.
APPROVED <i>D. Smith</i>		DRG. NO. E-5688	



*Unmanned Stream*



*Diversion Pt Loc: 200 ft N. E. 1430 ft E. from the SW corner Section 9, T.4S. R.4E., W.M.*