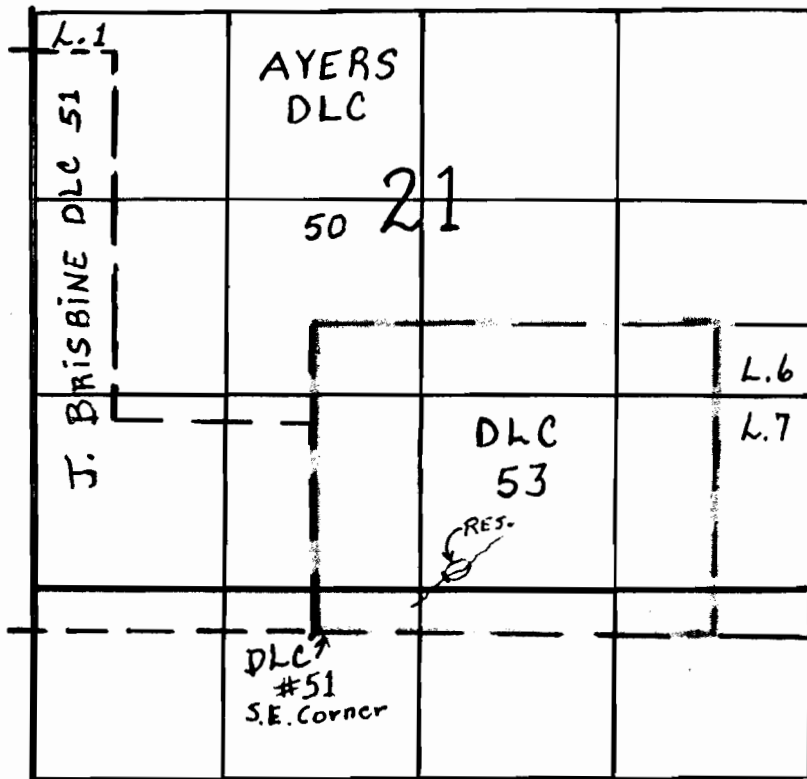


RECEIVED
OCT 03 1984
WATER RESOURCES DEPT.
SALEM, OREGON

T.2S. R.3W. W.M.



Dam : 400' N + 900'E
from SE CORNER
DLC #51

SCALE 4" = 1 MILE

Margaret H. Higginson

Application No. R-68185
Permit No. R10025