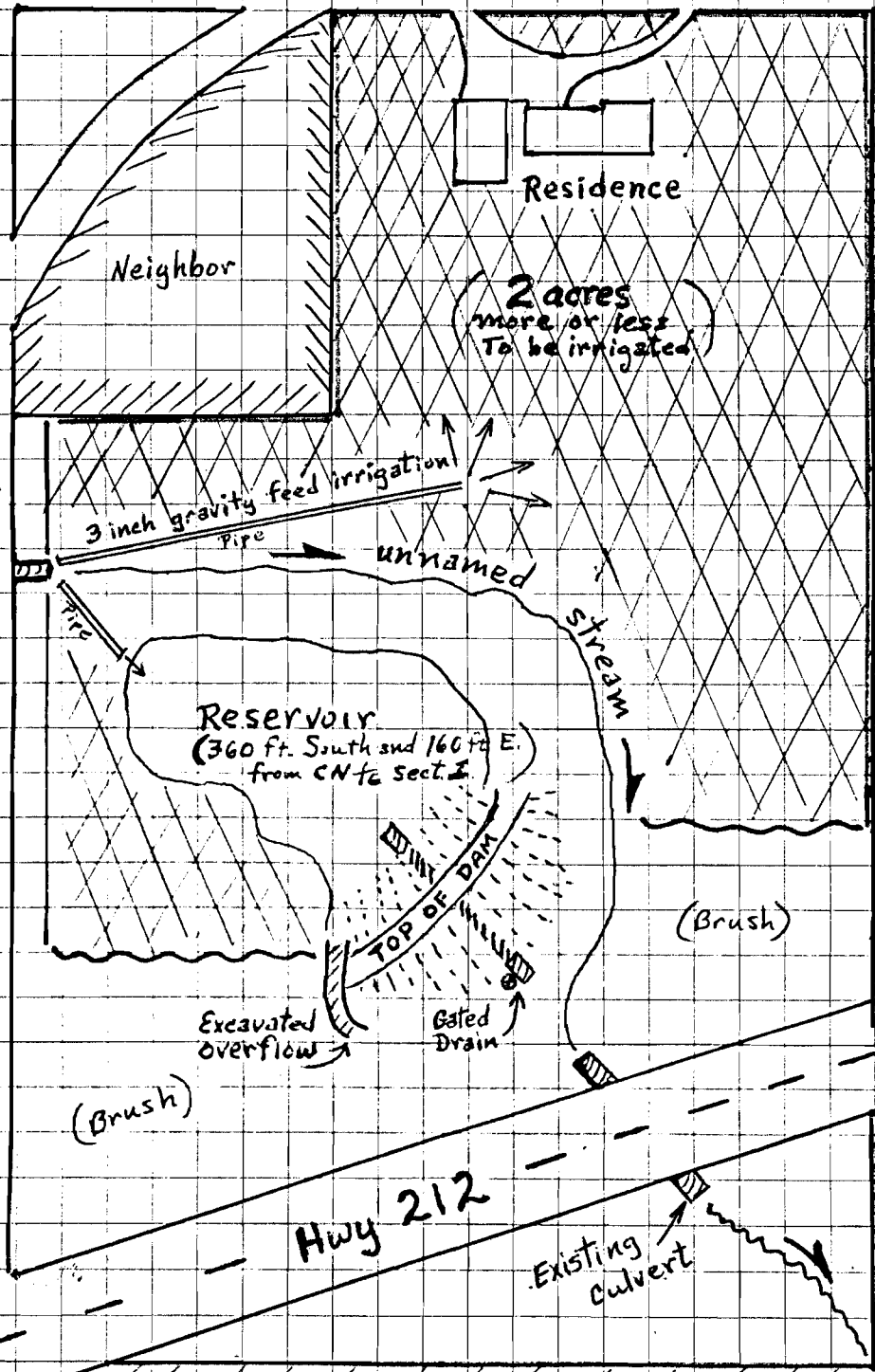


Known Survey Point
 CN 1/16 corner
 section 1
 Township 25.
 Range 3E.

SE Fireman Way

190'
 64'
 64'
 Existing Culvert 24"
 S.E. 272



RECEIVED

OCT 18 1983

WATER RESOURCES DEPT.
 SALEM, OREGON

RECEIVED

AUG 25 1983

WATER RESOURCES DEPT.
 SALEM, OREGON

Application No. R-65617, 65618
 Permit No. R 8993 - 48009

Scale 1" = 80'
 Irrigated Land

