

# FINAL PROOF SURVEY

UNDER

## T. 23S., R. 26 & 27E., W.M

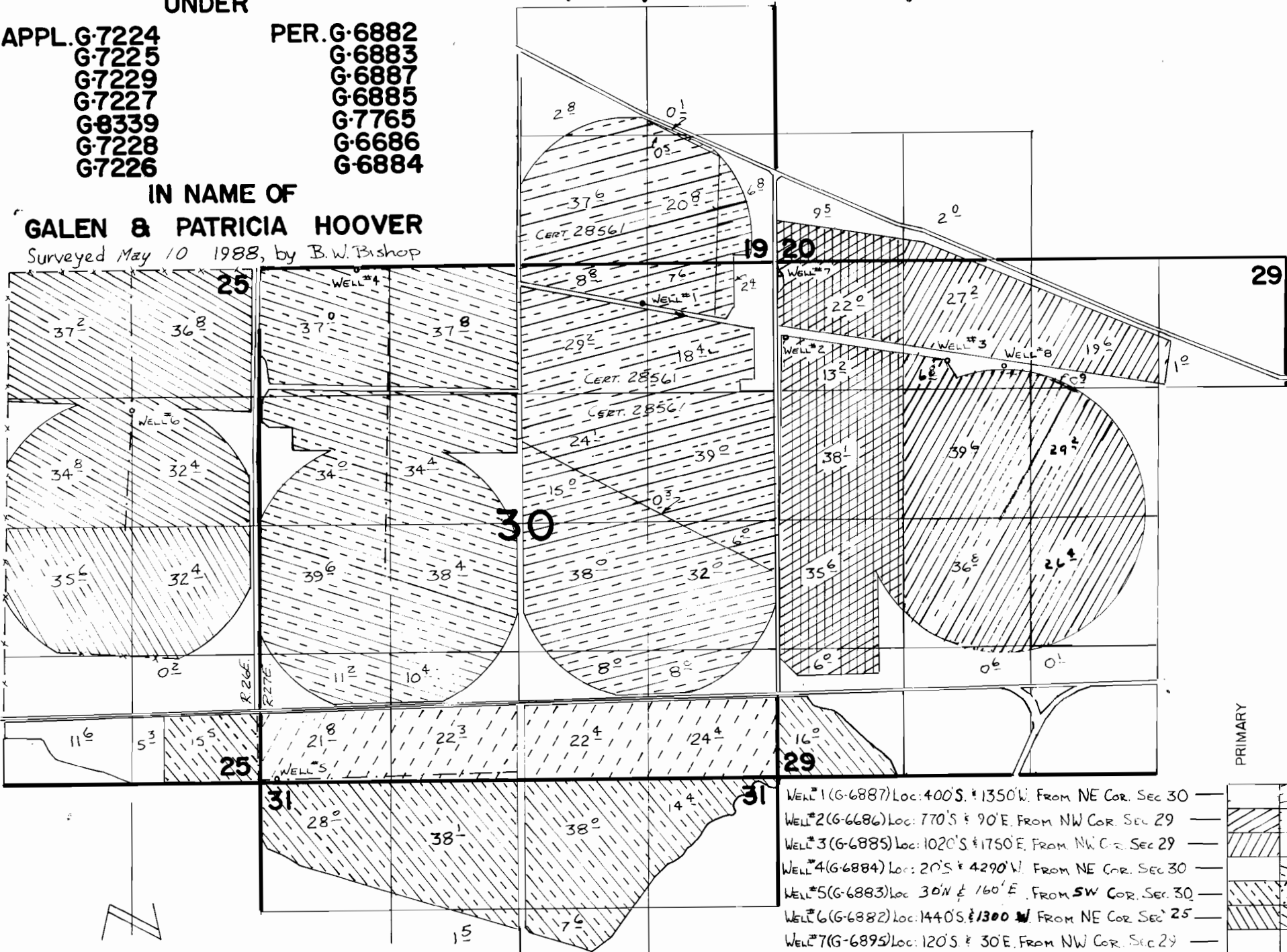
APPL. G-7224  
G-7225  
G-7229  
G-7227  
G-8339  
G-7228  
G-7226

PER. G-6882  
G-6883  
G-6887  
G-6885  
G-7765  
G-6686  
G-6884

IN NAME OF

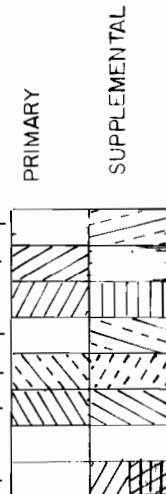
**GALEN & PATRICIA HOOVER**

Surveyed May 10 1988, by B.W. Bishop



SCALE 1" = 1320'

- WELL #1 (G-6887) Loc: 400'S & 1350'W FROM NE COR. SEC 30
- WELL #2 (G-6686) Loc: 770'S & 90'E FROM NW COR. SEC 29
- WELL #3 (G-6885) Loc: 1020'S & 1750'E FROM NW COR. SEC 29
- WELL #4 (G-6884) Loc: 20'S & 4290'W FROM NE COR. SEC 30
- WELL #5 (G-6883) Loc: 30'N & 160'E FROM SW COR. SEC 30
- WELL #6 (G-6882) Loc: 1440'S & 1300'W FROM NE COR. SEC 25
- WELL #7 (G-6895) Loc: 120'S & 30'E FROM NW COR. SEC 29
- WELL #8 (G-7765) Loc: 1090'S & 2340'E FROM NW COR. SEC 29



90884  
88-82-1102M  
4025-279-7478