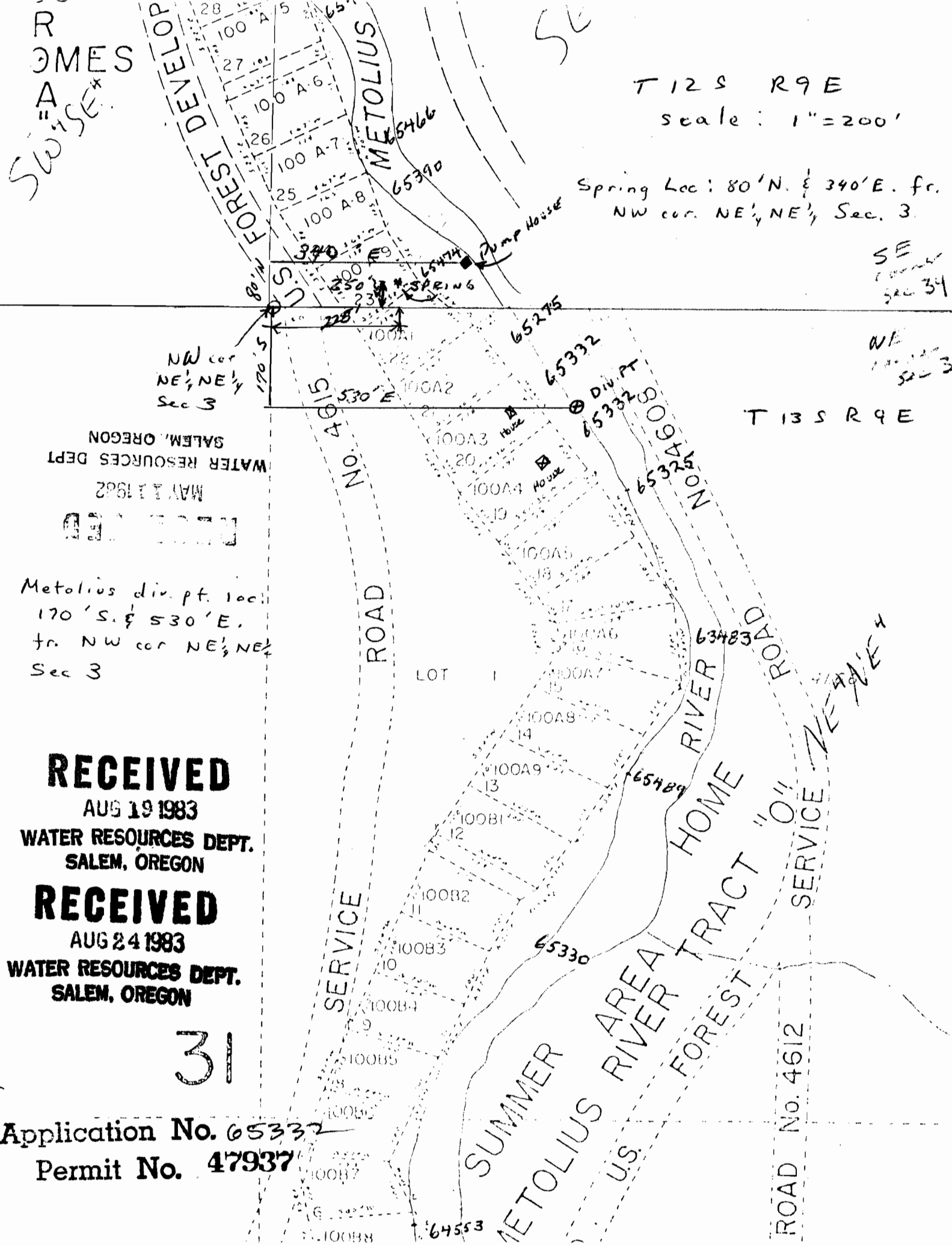


R
OMES
A
Swise*

T 12 S R 9 E
scale: 1" = 200'

Spring Loc: 80' N. & 340' E. fr.
NW cor. NE 1/4 NE 1/4 Sec. 3.



NW cor
NE 1/4 NE 1/4
Sec 3

SE
corner
Sec 34

NE
corner
Sec 3

T 13 S R 9 E

NOREGON
WATER RESOURCES DEPT
MAY 1 1982

Metolius div. pt. loc:
170' S. & 530' E.
fr. NW cor NE 1/4 NE 1/4
Sec 3

RECEIVED

AUG 19 1983

WATER RESOURCES DEPT.
SALEM, OREGON

RECEIVED

AUG 24 1983

WATER RESOURCES DEPT.
SALEM, OREGON

31

Application No. 65332

Permit No. 47937

NOTIFIED
JUL 21 1983
WATER RESOURCES DEPT.
SALEM, OREGON

Application No. 65332
Permit No. 47937

