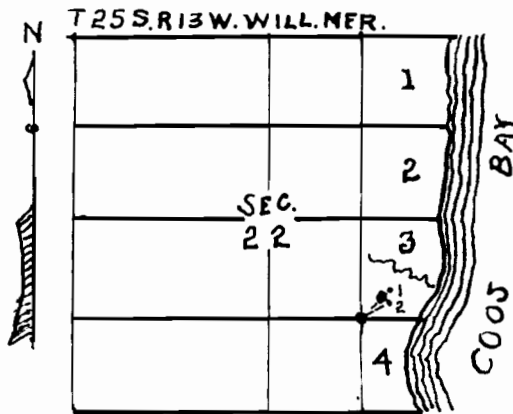


MAP

OF

PROPOSED WATER SYSTEM AT SHETTERS ADDITION TO MARSHFIELD OREGON



9657
6471

State of Oregon } S.S.
County of Coos. }

I S. B. Cathcart of Marshfield Oregon do hereby certify that this map was made from notes taken during an actual survey made by me July 26th 1924. and that it correctly represents the position of the diverting points of the water from the two small unnamed streams tributary to Coos Bay, said points are situated in Lot 3 of section 22 T25S Range 13W. Will. Mer. Point 1 is in Lot 5 Block 9 of Shettlers Addition to Marshfield Oregon, and from which the S.W. corner of said Lot 3 bears S 44° 10' W 7.54 chains and from point 2 the S.W. corner of Lot 3 bears S 36° 12' W. 7.29 chains. Red circle shows approximately where pipe lines will run

S. B. Cathcart
Surveyor

