

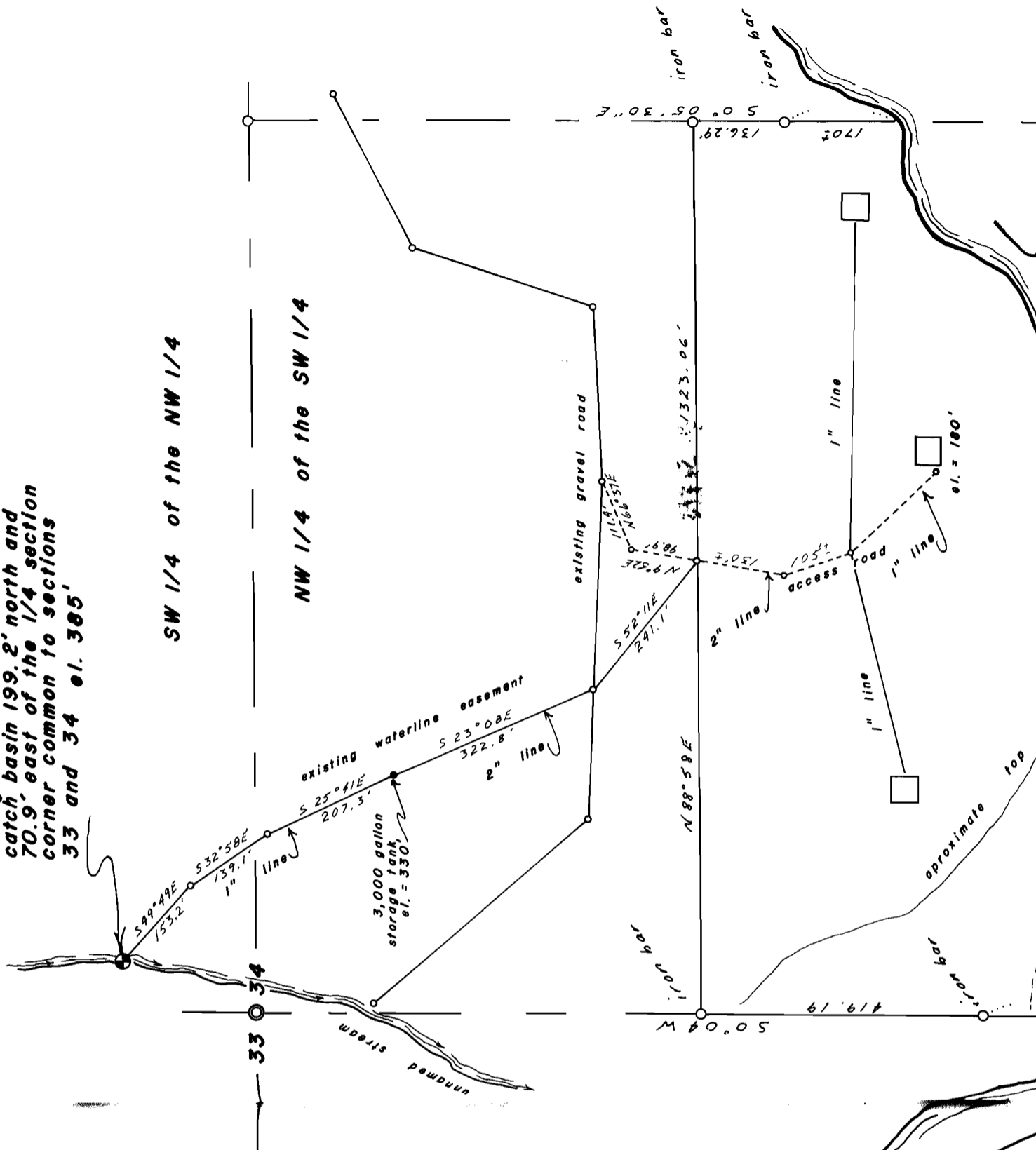
**DEED FOR THE
ESTATE**

**located in
NW 1/4 and SW 1/4 of NW 1/4 sec. 34
of W.M.
Oregon**

**point of diversion is a 4'
triangular stone and concrete
catch basin 199.2' north and
70.9' east of the 1/4 section
corner common to sections
33 and 34 el. 385'**

SW 1/4 of the NW 1/4

NW 1/4 of the SW 1/4



46918