

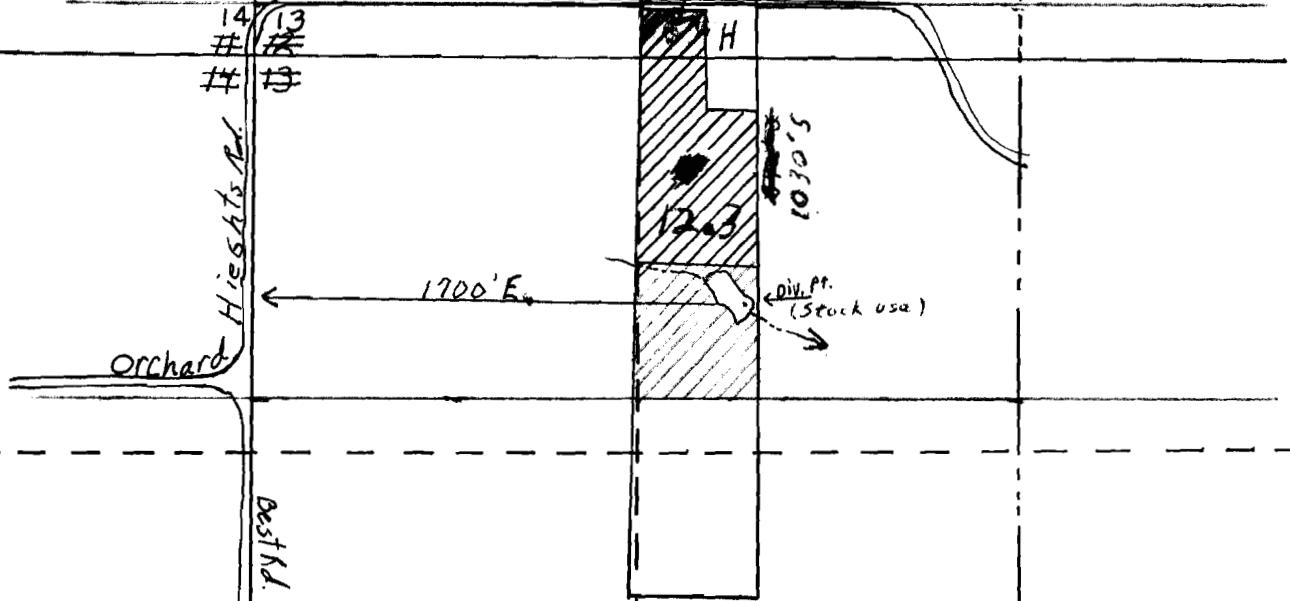
RECEIVED

JUL 30 1974
WATER RESOURCES DEPT.
SALEM, OREGON



R 4 W

11 12
14 13
13
13



T 75

Application No. R-61973 & 61974
Permit No. R 8307
46053

DELORES McDOWELL
Scale 1" = 660'
T 75 R 4 W
SECTIONS 12 & 13
POLK COUNTY OR.