

RECEIVED

APR 16 1985

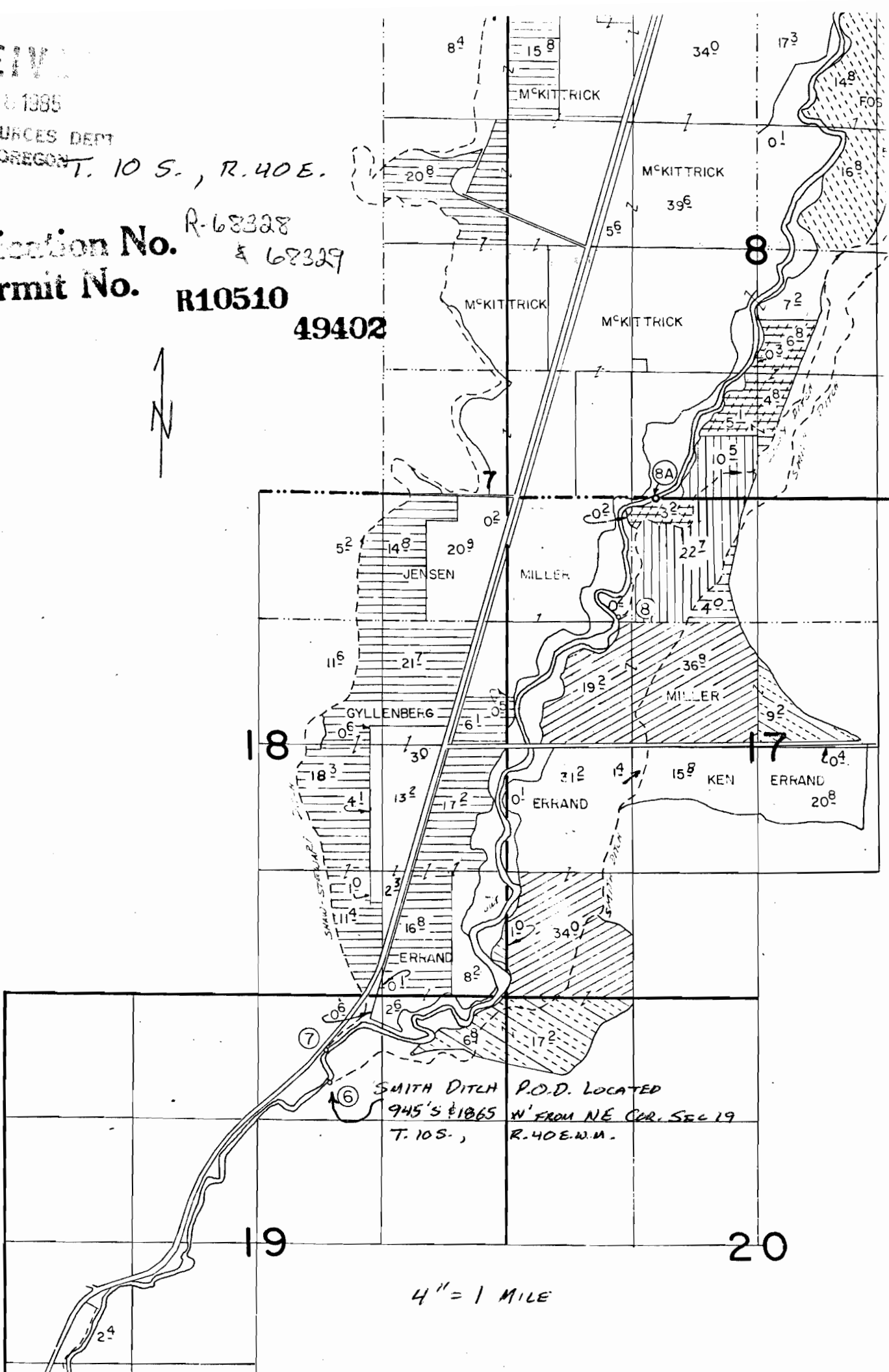
WATER RESOURCES DEPT  
SALEM, OREGON

T. 10 S., R. 40 E.

Application No.  
Permit No.

R-68328  
& 68329

R10510  
49402



SMITH DITCH P.O.D. LOCATED  
945'S & 1065 N' FROM NE COR. SEC 19  
T. 10 S., R. 40 E. W.M.

4" = 1 MILE

RECEIVED

APR 11 1985

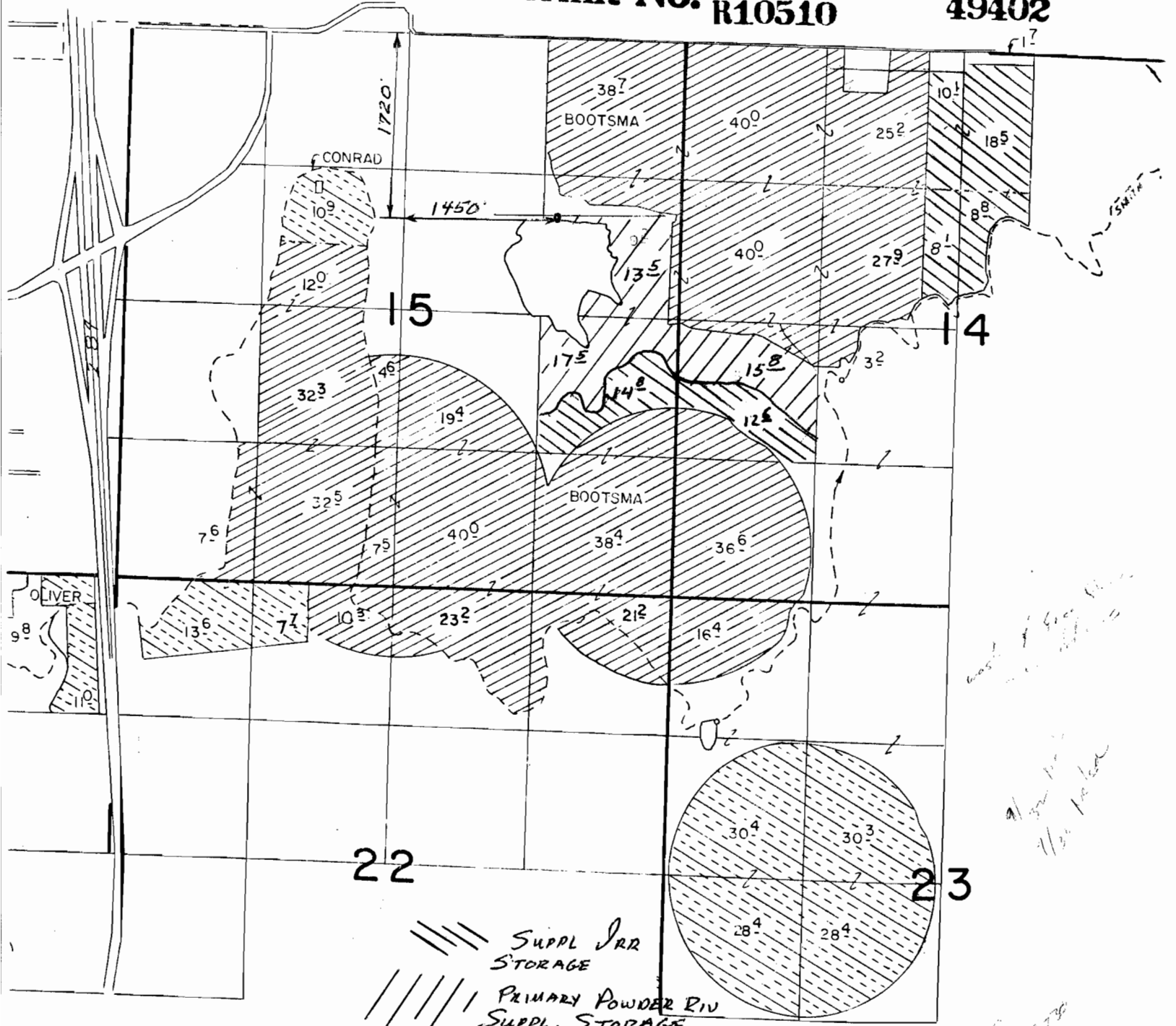
WATER RESOURCES DEPT  
OREGON

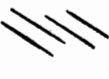

T. 9 S., R. 40 E W 11

Application No. R-68328 & 68329

Permit No. R10510

49402



 SUPPL IRR STORAGE  
 PRIMARY POWDER RIV SUPPL. STORAGE

4" = 1 MILE

*Handwritten notes:*  
west of 600 ft  
1/2 mi from  
1/2 mi from

*Handwritten notes:*  
1/2 mi from  
1/2 mi from

*Handwritten notes:*  
SE corner  
1/2 mi from  
1/2 mi from

*Handwritten notes:*  
24...  
1/2 mi from