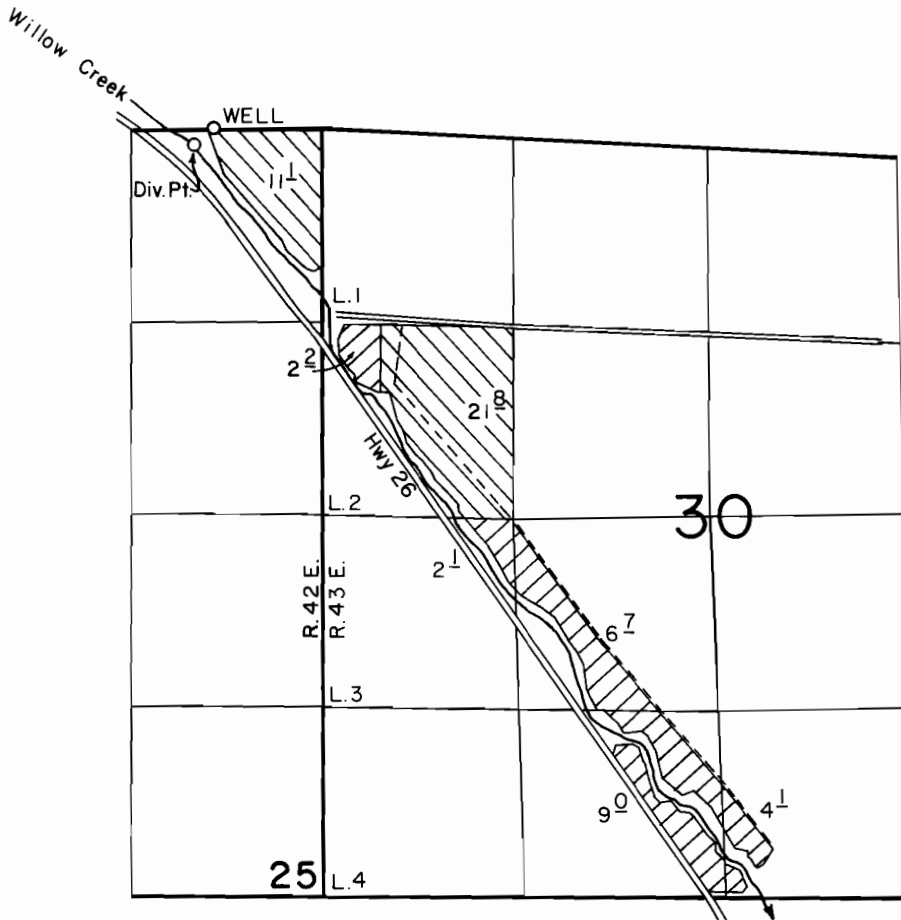




# T. 15 S., R. 42 & 43 E., W.M.



WELL LOC.: 20' S. & 750' W.; DIV. PT. LOC.: 140' S. & 890' W., BOTH FROM THE NE CORNER SECTION 25.

-  SUPPLEMENTAL FROM WELL
-  PRIMARY FROM WELL, SUPPL. FROM WILLOW CREEK

## FINAL PROOF SURVEY UNDER

55635                      42210

Application No. G-3590. Permit No. G-3378....

IN NAME OF

.....RICHARD D. HEVNER.....

Surveyed OCT. 13... 1977, by J. S. DONALDSON  
AUG. 29 1981                      L.M. TOLL

*JST*