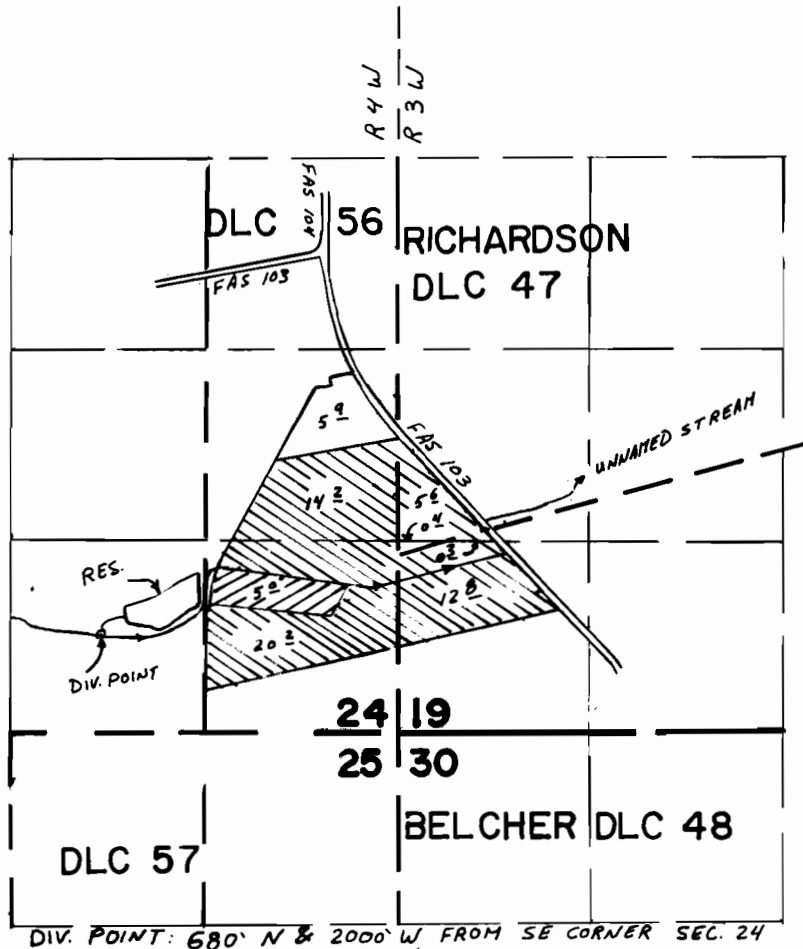


# T. 5 S., R. 3&4 W., W.M.



DIV. POINT: 680' N & 2000' W FROM SE CORNER SEC. 24  
 RES. - 1000' N & 1360' W

 PRIMARY

 SUPPLEMENTAL

SCALE 1" = 1320'

## FINAL PROOF SURVEY

UNDER

R-57292

R-7828

Application No. 57293 Permit No. 44146

IN NAME OF

H. VERNON STEPHENS

Surveyed AUG. 17, 1988, by Z. SALEH