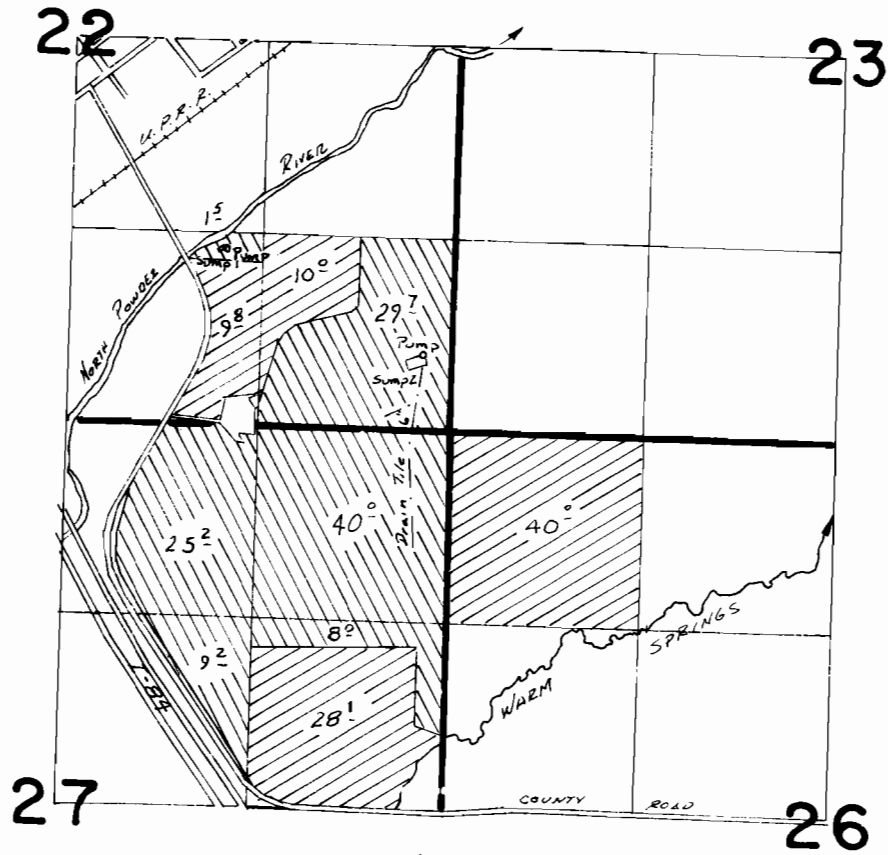


T. 6S., R. 39E., W.M.



SUMP 1 Loc: 1200' N. & 1580' W. FROM SE COR. SEC. 22

SUMP 2 Loc: 520' N. & 200' W. FROM SE COR. SEC. 22



Suppl G-5931, G-8871



PRIM G-5931  
Suppl G-8871

### FINAL PROOF SURVEY UNDER

G-9471

G-8871 - SUMP 1

Application No. G-6311 Permit No. G-5931 - SUMP 2

IN NAME OF

ELMER HILL

Surveyed Aug. 5, 1923, by W. C. Church