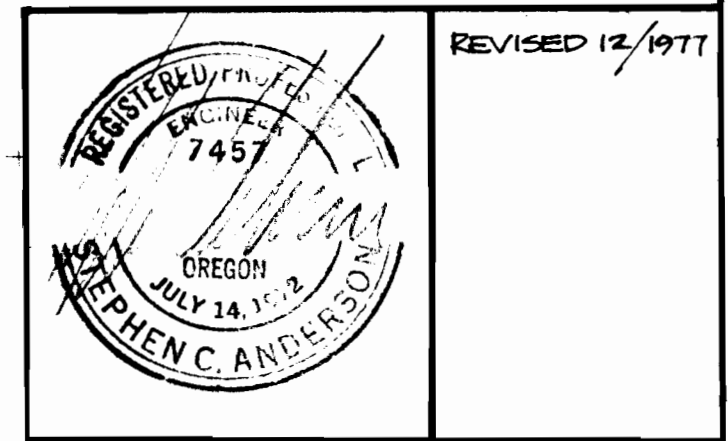
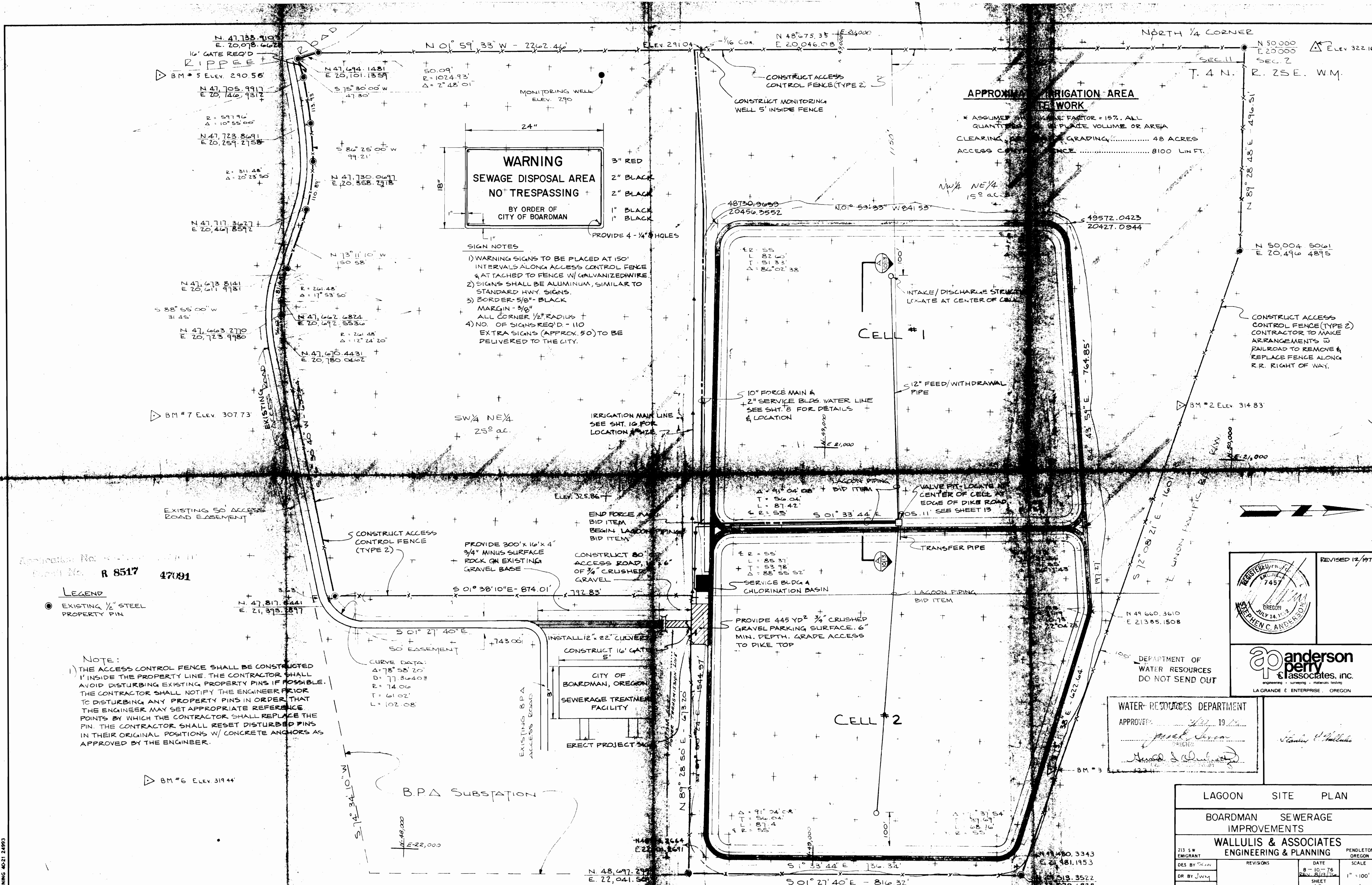


REVISED
 SHEET 10 OF 11
 11/13/76
 11/13/76



anderson perry & associates, inc.
 engineering • surveying • materials testing
 LA GRANDE • ENTERPRISE • OREGON

DEPARTMENT OF WATER RESOURCES
 DO NOT SEND OUT

WATER RESOURCES DEPARTMENT
 APPROVED: *[Signature]* 19
[Signature]

LAGOON SITE PLAN			
BOARDMAN SEWERAGE IMPROVEMENTS			
WALLULIS & ASSOCIATES ENGINEERING & PLANNING			
213 SW EMIGRANT	REVISIONS	DATE	SCALE
DR BY JWG		8-10-76	1" = 100'
CK BY SGW		REV. 2/11/76	
		SHEET 10	

BRUNING 4021 2493