

AUG 19 1981

FIELD MAP SHEET WATER RESOURCES DEPT
SALEM, OREGON

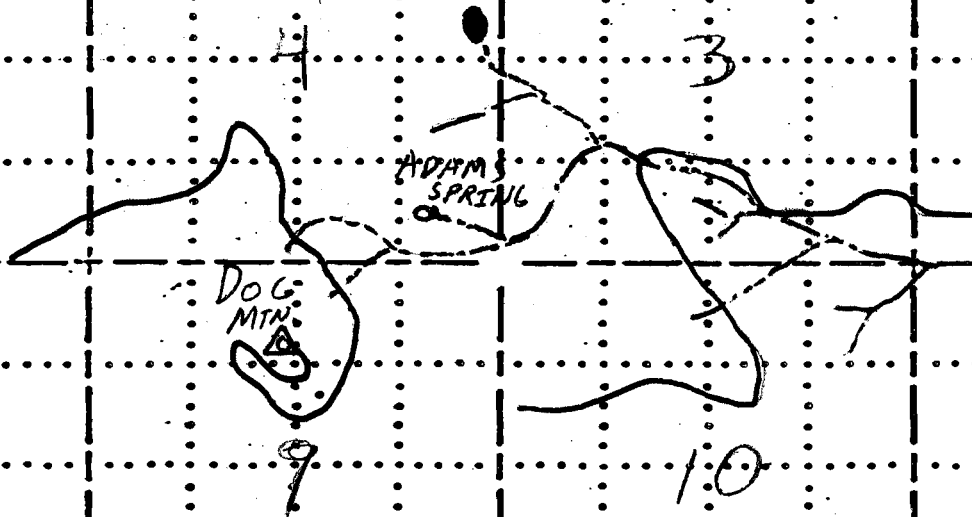
T. 40 S. R. 17 E. Sec. Subdiv. N.F.

Mapped by Reviewed by Scale 2 inches = 1 Mile

- RESERVOIR
- DRAINAGE
- ROAD

Application No. R-62525

Permit No. R 9123



40-17-9

RECEIVED

AUG 19 1981

WATER RESOURCES DEPT
SALEM, OREGON

Application No. R-62525
Permit No. R 9123

(Strawberry Butte)

OS.

