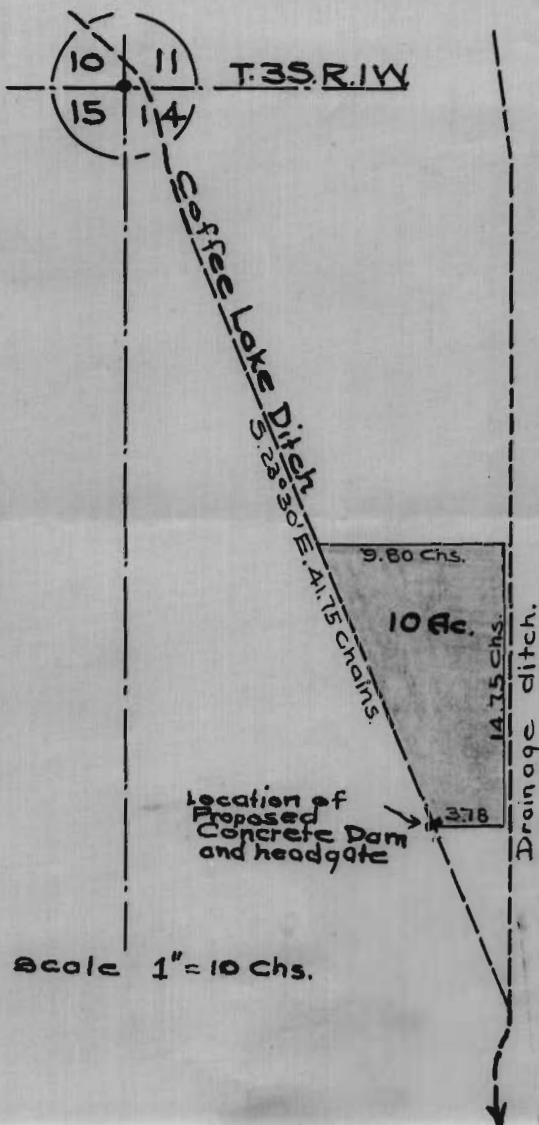
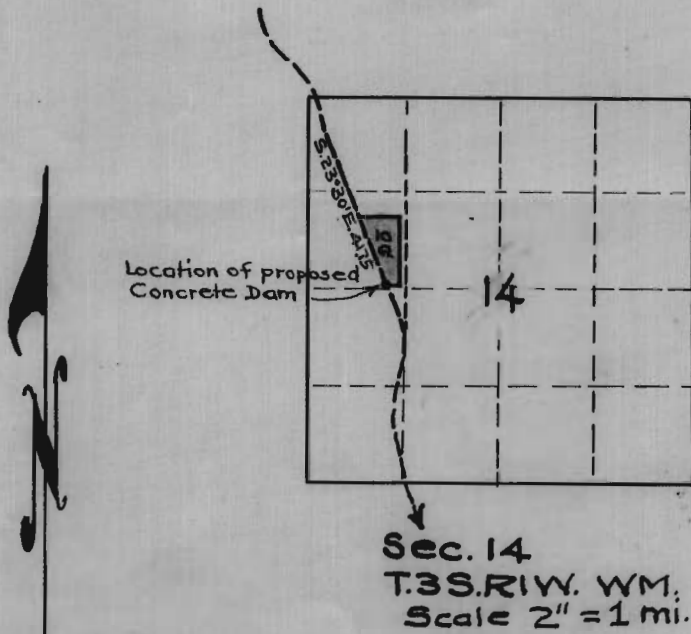


MAP OF SECTION 14 T.3S.R.1W.WM.

Showing Location of proposed Concrete dam and headgate in Coffee Lake Ditch to regulate flow of water for sub-irrigation.

10336



I, D.T. Meldrum, do hereby certify that the attached map was made from notes taken during an actual survey made under my direction and that it correctly represents the works described in the accompanying application together with the location of streams and other ditches in the immediate vicinity.

Application No. 10336

Permit No. 6832



STATE ENGINEER RECEIVED

AUG 14 1925

SALEM, OREGON

10336