

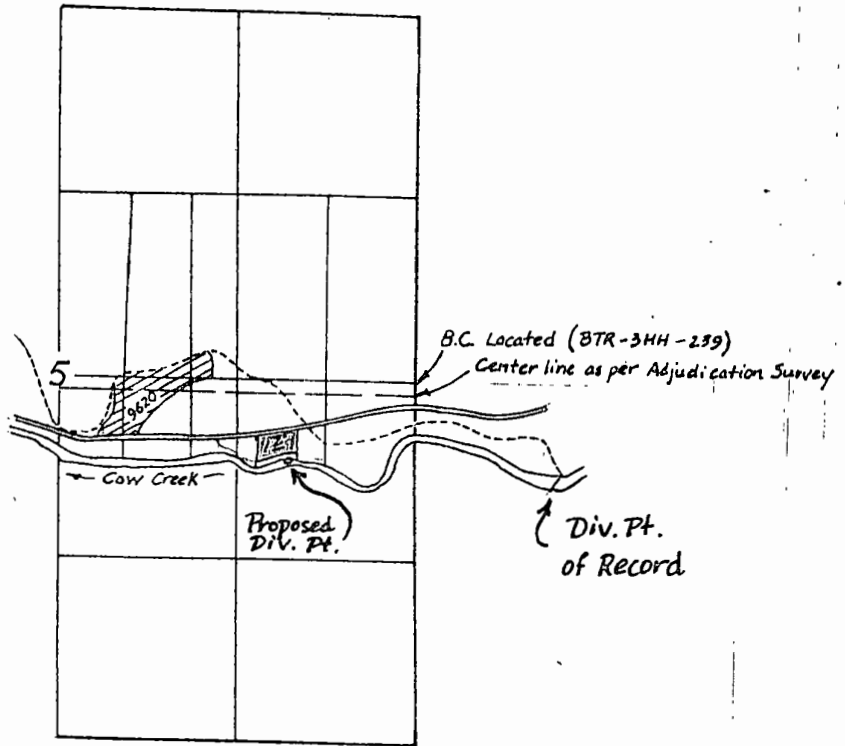
T-4747

RECEIVED

APR 15 1981

T.32 S. R.4 W. W.M.

WATER RESOURCES DEPT
SALEM, OREGON



Scale: 4" = 1 mile

Cert. No. 9613

Div. Pt. of Record : 650' S. and 1080' E.

Proposed Div. Pt. : 600' S. and 920' W.

} from E $\frac{1}{4}$ cor. Sec. 5.