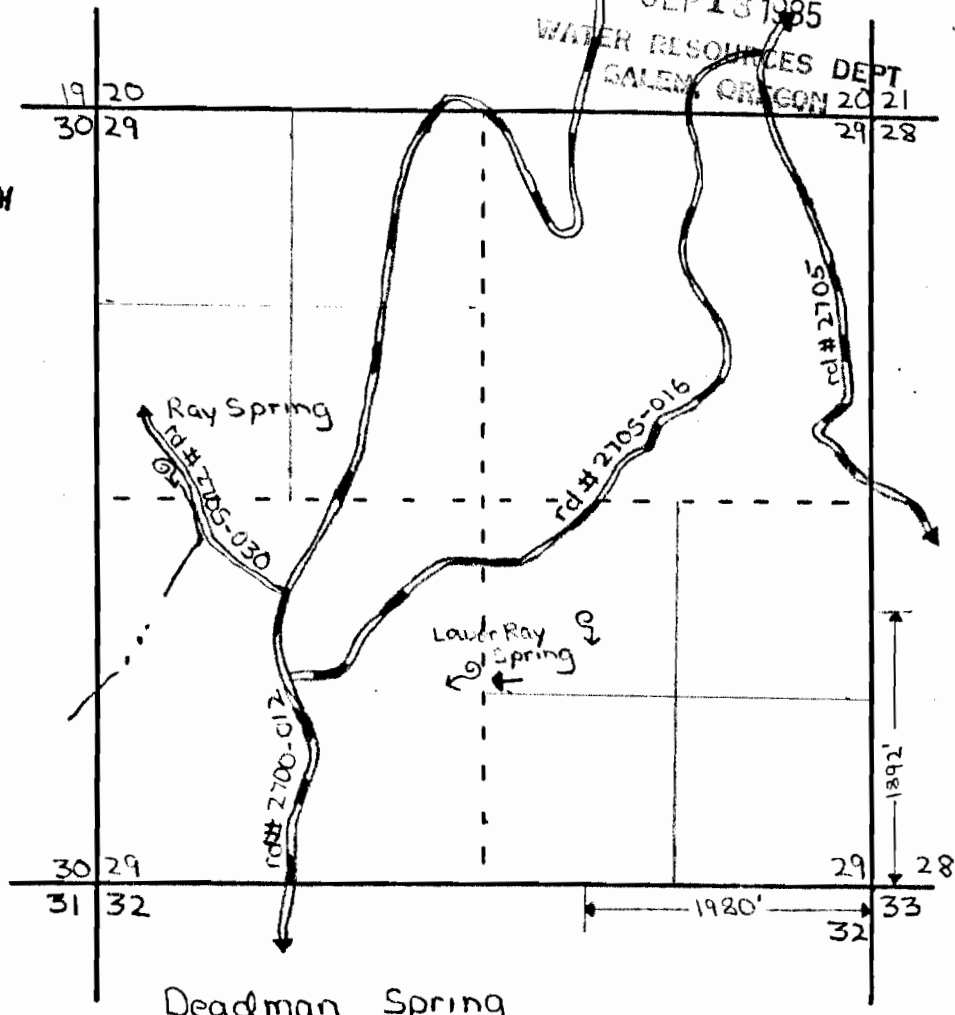


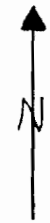
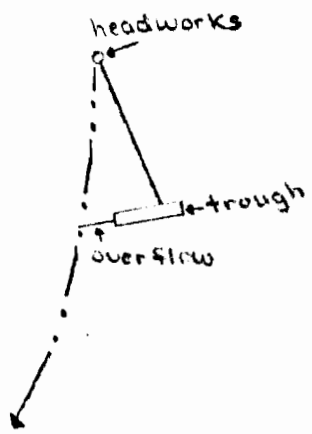
RECEIVED

SEP 18 1985
WATER RESOURCES DEPT
SALEM, OREGON 20 21
29 28

SCALE
4" = 1 mile



Deadman Spring
T12S, R17E, Sec 29, NW 1/4 SE 1/4, WM



Scale 1 inch = 40 feet

Application No. 68552
Permit No. 49588