

CITY OF HAINES, OREGON

WATER SYSTEM IMPROVEMENTS

WELL PUMP STATION



1982

Application No. G-10853
Permit No.

INDEX

- COVER
1. WELL PUMP STATION - SITE PLAN
 2. WELL PUMP STATION - STRUCTURAL
 3. WELL PUMP STATION - MECHANICAL
 4. WELL PUMP STATION - ELECTRICAL & TELEMETRY



CITY COUNCIL

- RICHARD CAMP, Mayor
- RUTH E. BAHLER
- BERTHA BARNES
- RUSSELL HUNT
- BEVERLY JOHNSON
- GEORGE McMILLAN
- DWIGHT PERKINS

CITY OFFICIALS

- LEONA HAYHURST, Recorder - Treasurer
- FLOYD C. VAUGHN, City Attorney
- WALLACE BOGART, Maintenance Foreman

RECEIVED
FEB 4 1983
WATER RESOURCES DEPT.
SALEM, OREGON

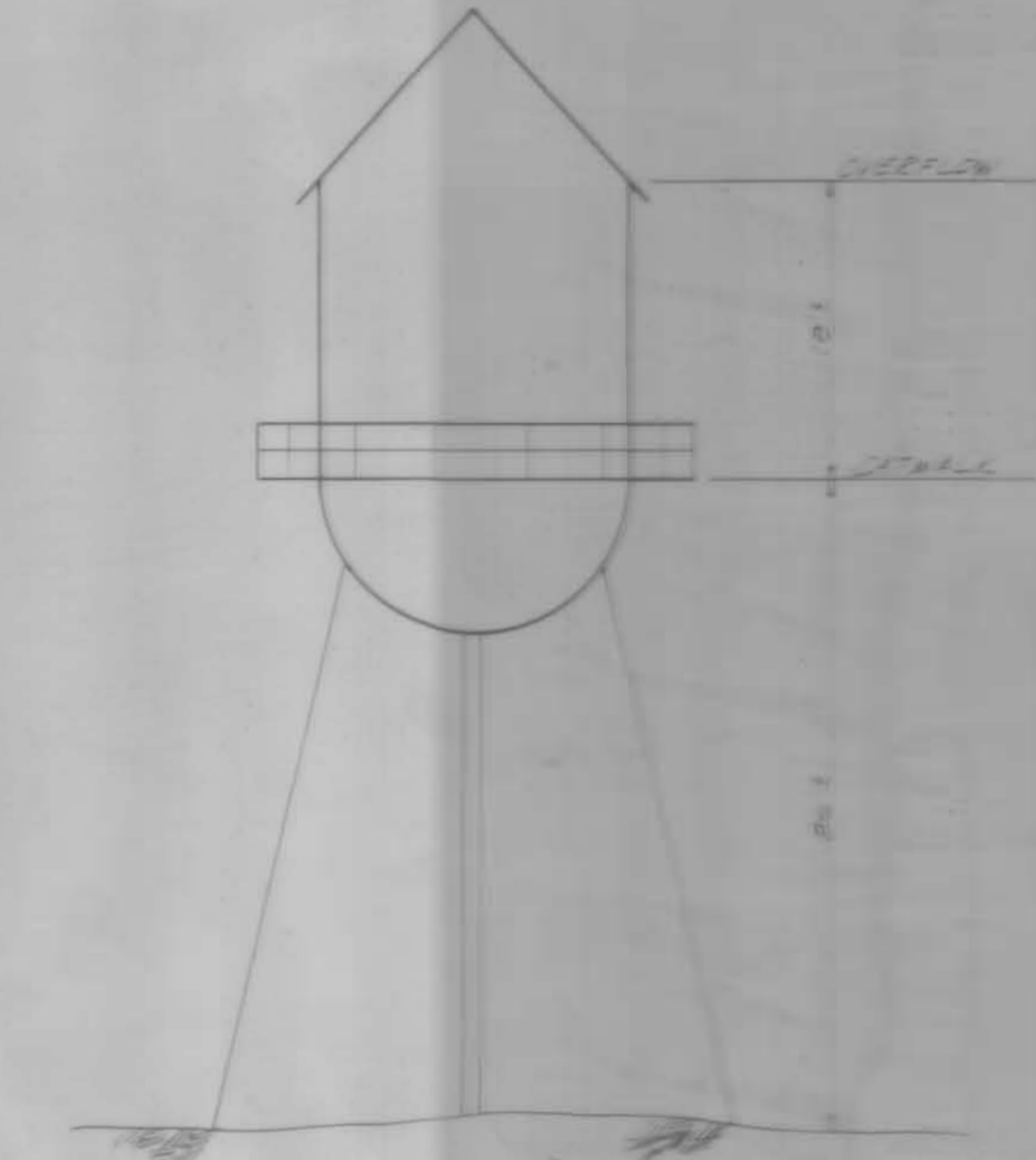
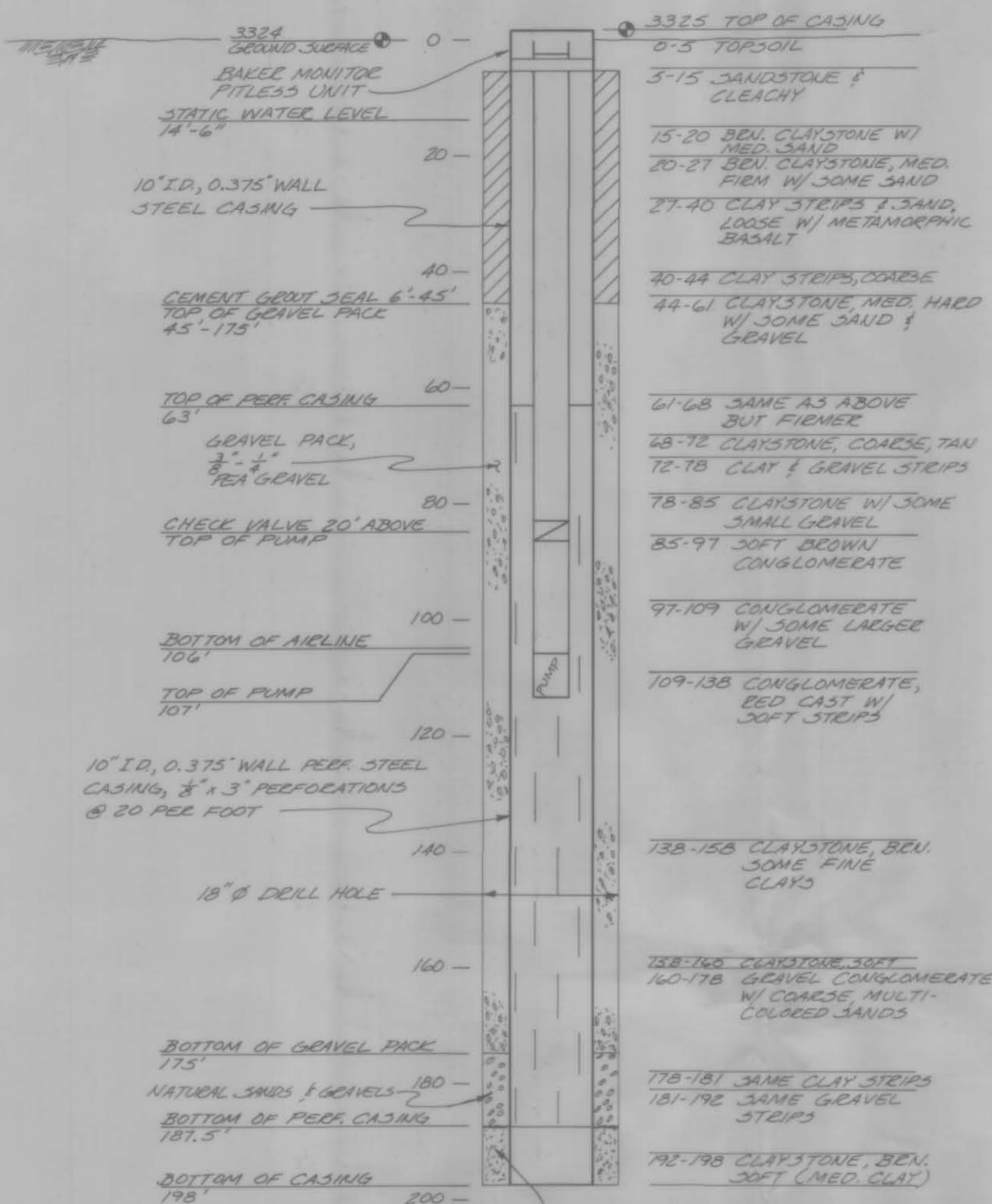
RECEIVED
DEC 2 1982
WATER RESOURCES DEPT.
SALEM, OREGON

★★★ RECORD DRAWINGS

These record drawings have been prepared, in part, on the basis of information compiled and furnished by others. They may contain some discrepancies and omissions, and do not necessarily represent "exact" field conditions. The Owner and the Engineer accept no responsibility for their accuracy.

10/12/82 RJK



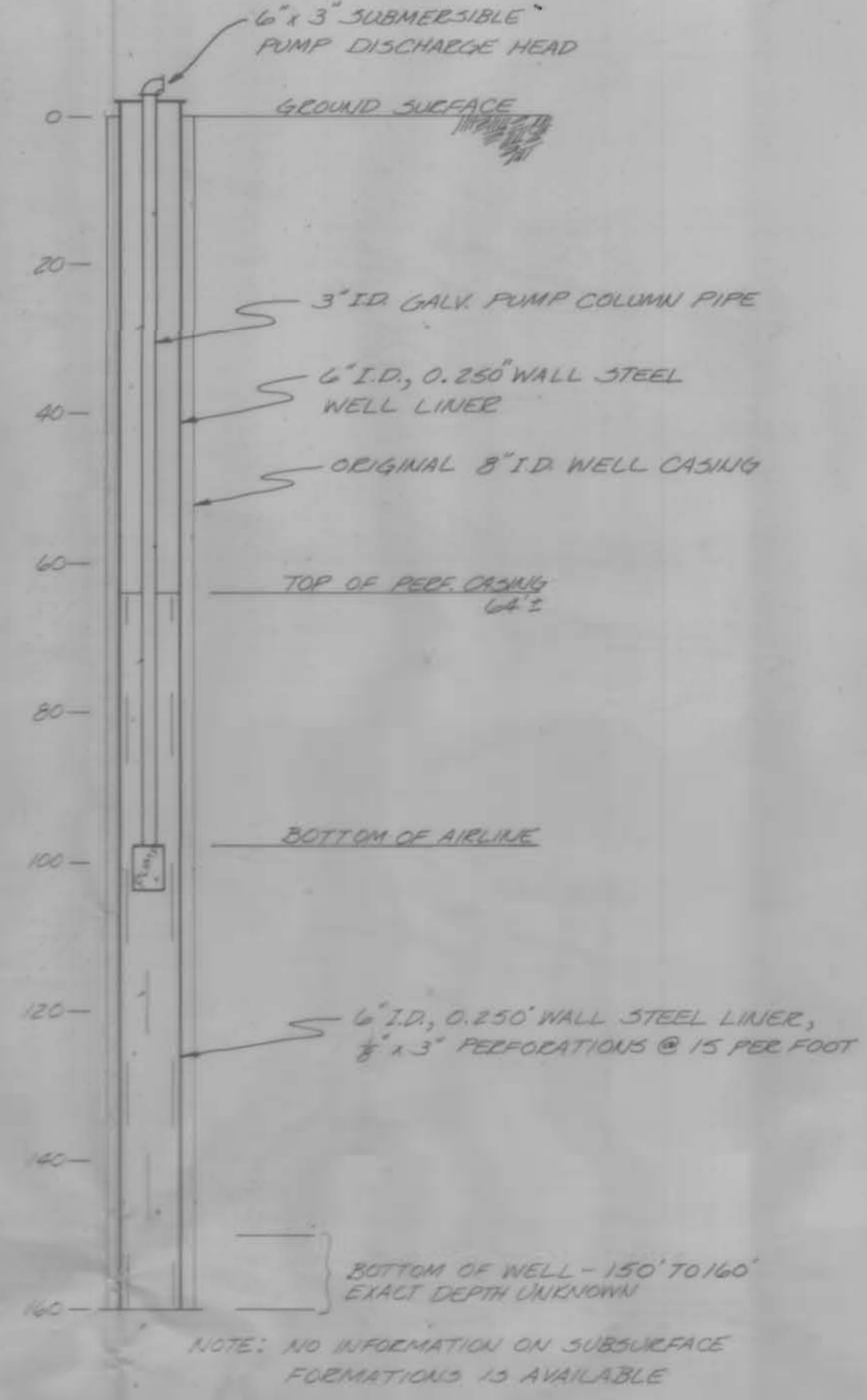


WELL NO. 1

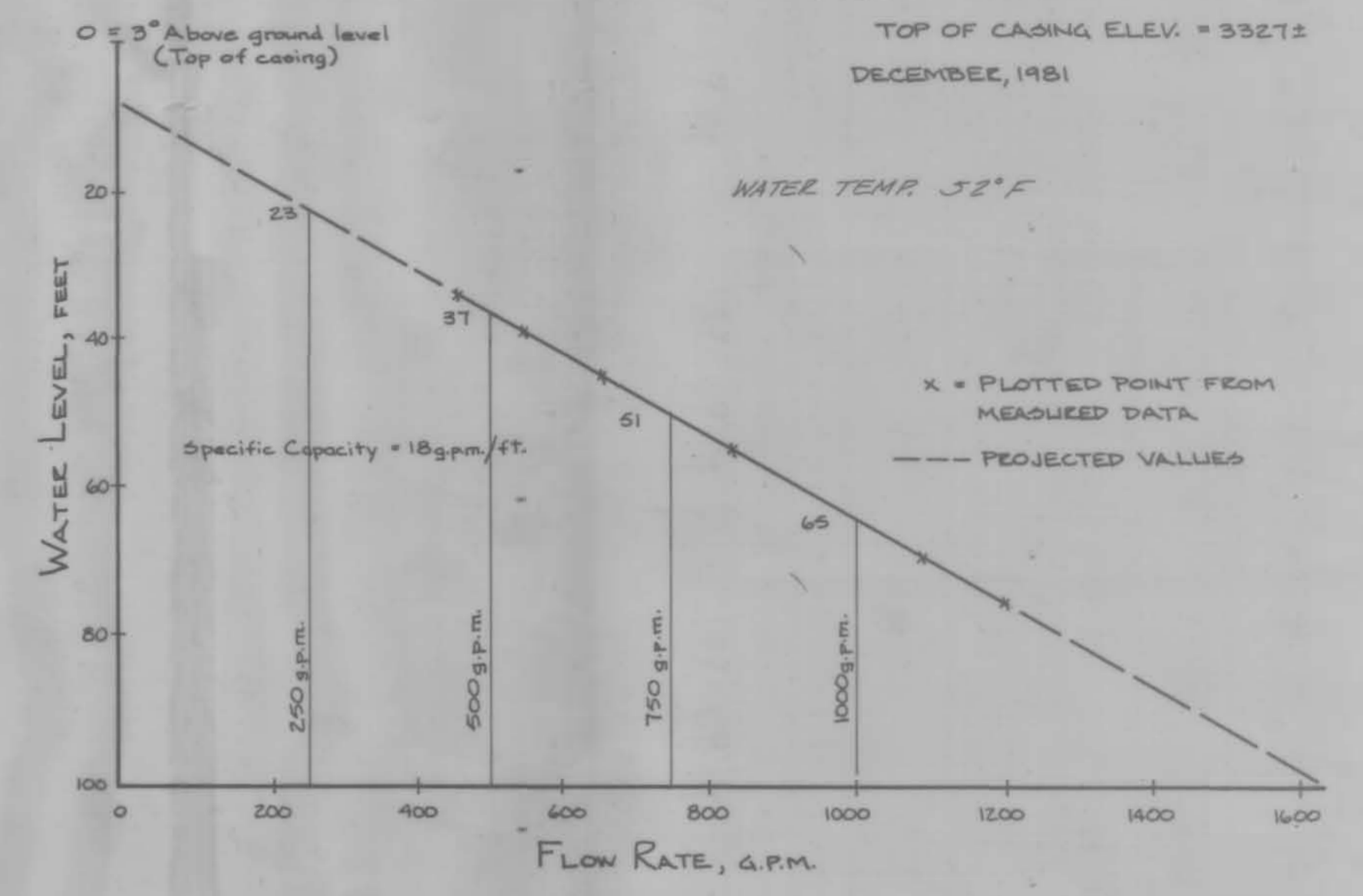
LOCATION: OLSON STREET BETWEEN 2nd & 3rd ST. NEAR ELEVATED STORAGE TANK 200' WEST, 100' SOUTH OF CENTER OF SEC. 33, T.75, R.39E, W.M.

ORIGINAL WELL DRILLED IN 1910
WELL LINED WITH 6" I.D. PIPE: JANUARY, 1981
NEW PUMP INSTALLED: JANUARY, 1981
NEW WELL HOUSE COMPLETED: FEBRUARY, 1981

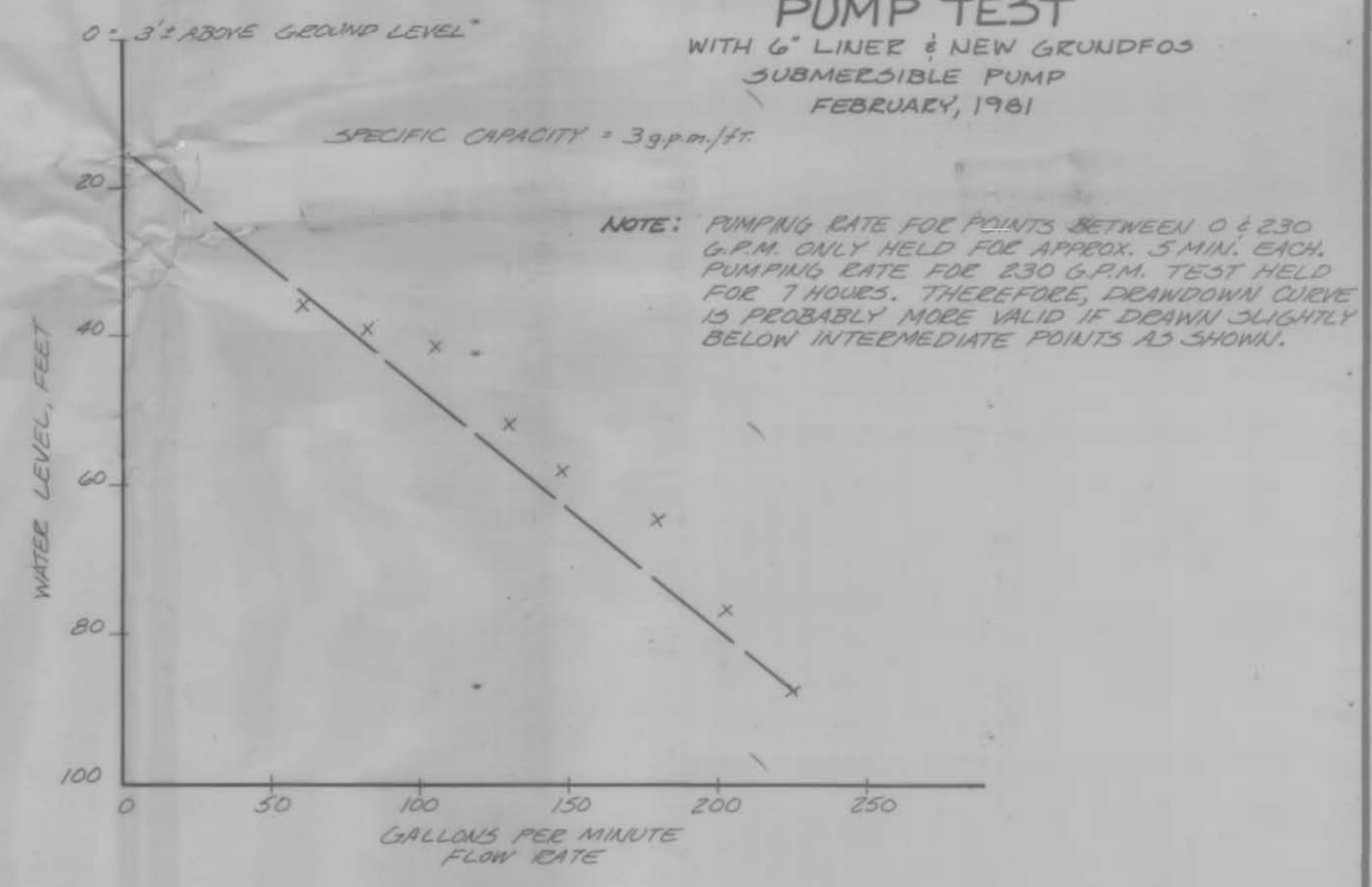
SUBMERSIBLE PUMP:
 GRUNDFOS 3P-35-7 STAINLESS
 15 h.p. 3600 r.p.m.
 230 v. 3 phase RATED AT 225 g.p.m.
 @ 150 FT TOTAL DYNAMIC HEAD



CITY OF HAINES WELL No. 3
PUMP TEST
 TOP OF CASING ELEV. = 3327±
 DECEMBER, 1981



CITY OF HAINES WELL No. 1
PUMP TEST
 WITH 6" LINER & NEW GRUNDFOS SUBMERSIBLE PUMP
 FEBRUARY, 1981



Application No. G-10853
Permit No. G10007

***** RECORD DRAWING *****

RECEIVED
 DEC 1982
 WATER RESOURCES DEPT.
 SALEM, OREGON

These record drawings have been prepared, in part, on the basis of information compiled and furnished by others. They may not in some discrepancies and omissions, and do not necessarily represent "exact" field conditions. The Owner and the Engineer accept no responsibility for their accuracy.



CITY OF HAINES
WATER SYSTEM IMPROVEMENTS

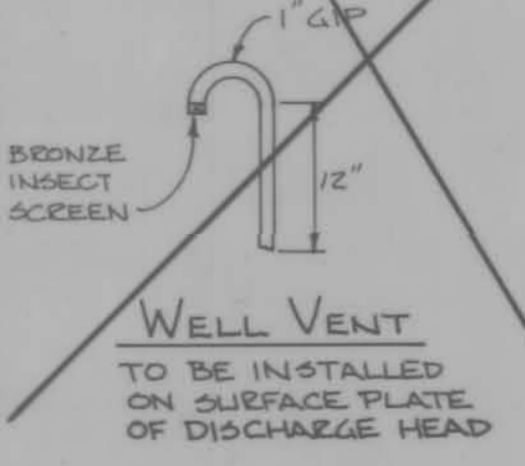
WELL NO. 1 & 3 AS-BUILT INFORMATION

SCALE: 1" = 20' VERT.
 DATE: 1981-82
 JOB NO. 705-03P

Anderson Perry & Associates, Inc.
 engineering • surveying • materials testing
 LA GRANDE, ORE. & WALLA WALLA, WASH.

SHEET NO.

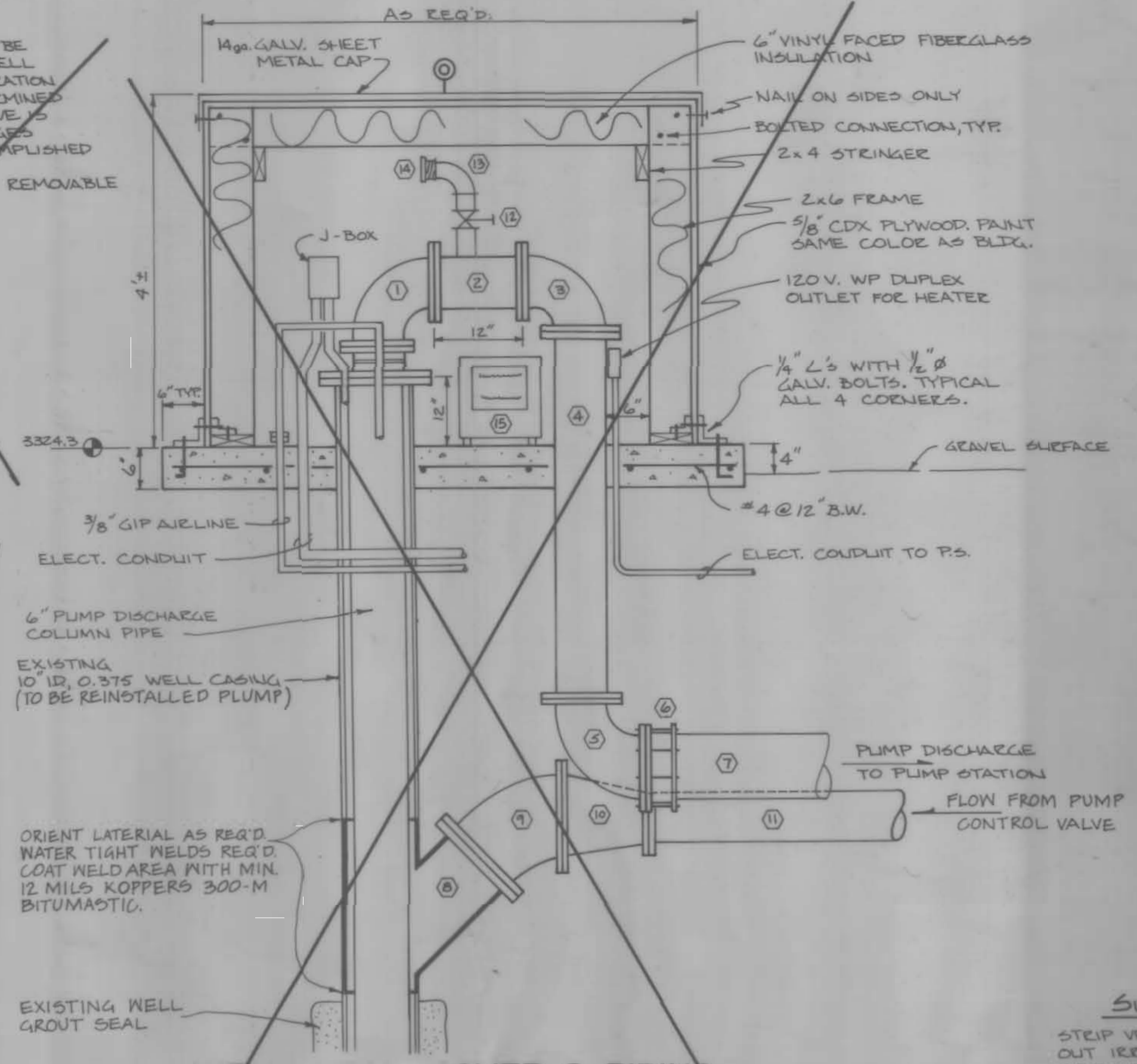
NOTE:
THE WELL COVER SHALL NOT BE CONSTRUCTED UNTIL THE WELL & PUMP STATION ARE IN OPERATION & THE ENGINEER HAS DETERMINED THAT AN AIR RELEASE VALVE IS NOT REQUIRED. ANY CHANGES NECESSARY WILL BE ACCOMPLISHED BY CHANGE ORDER. COVER SHALL BE READILY REMOVABLE AS A SINGLE UNIT.



WELL VENT
TO BE INSTALLED ON SURFACE PLATE OF DISCHARGE HEAD

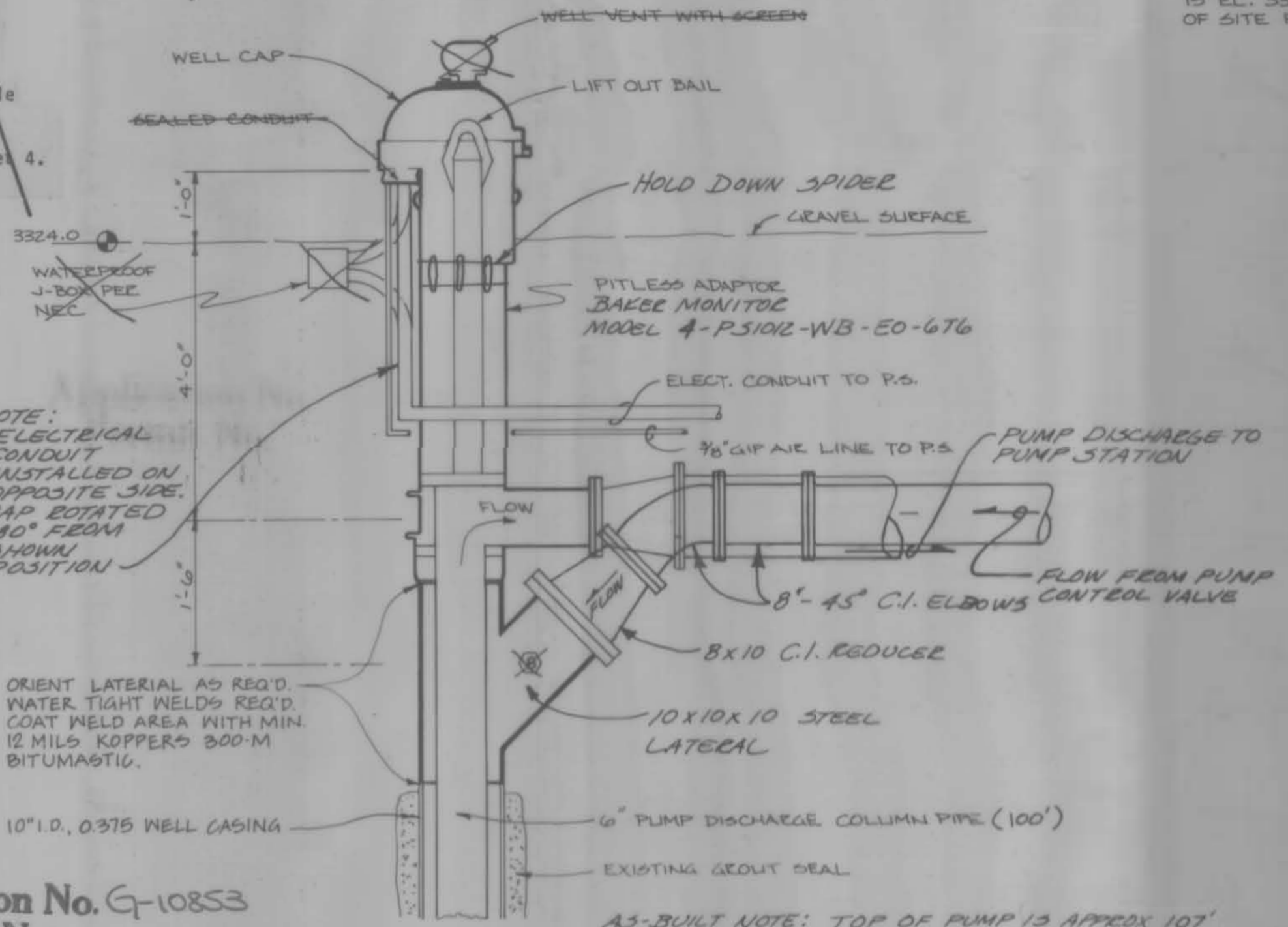
FITTING SCHEDULE
OPTION NO. 1

1. 18"x6" Submersible Pump Discharge Head w/Air Line and Vent Holes. Byron Jackson or equal.
2. 6" Flg. Spool
3. 6" - 90° Flg. Ell
4. 6"x5'3" Long Flg. Spool
5. 6"x8" Flg. Reducing 90° Ell with Thrust Block
6. 8" Flg. Coupling Adaptor
7. 8" Min. CL 50 D.I. Pipe
8. 10" I.D. PE x 10" I.D. PE x 10" I.D. Flg. Steel 45° Lateral welded watertight to Well Casing
9. 10" 45° Flg. C.I. Elbow
10. 6"x10" Flg. C.I. Reducer
11. 6" Min. CL 50 D.I. Pipe
12. 2" Bronze Gate Valve
13. 2" GIP 90° Ell
14. 2 1/2" NST Fire Hose Nipple with Cap
15. Portable Heater. See Sheet 4.



WELL HEAD COVER & PIPING
PUMP STATION No. 3 - Option No. 1
N.T.S.

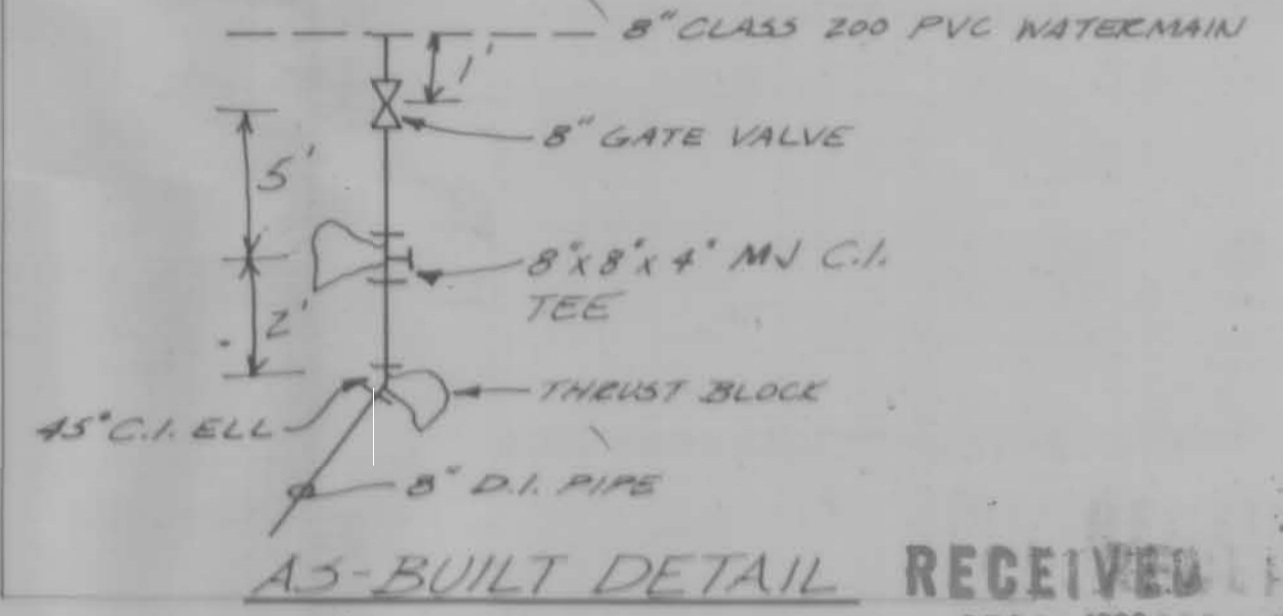
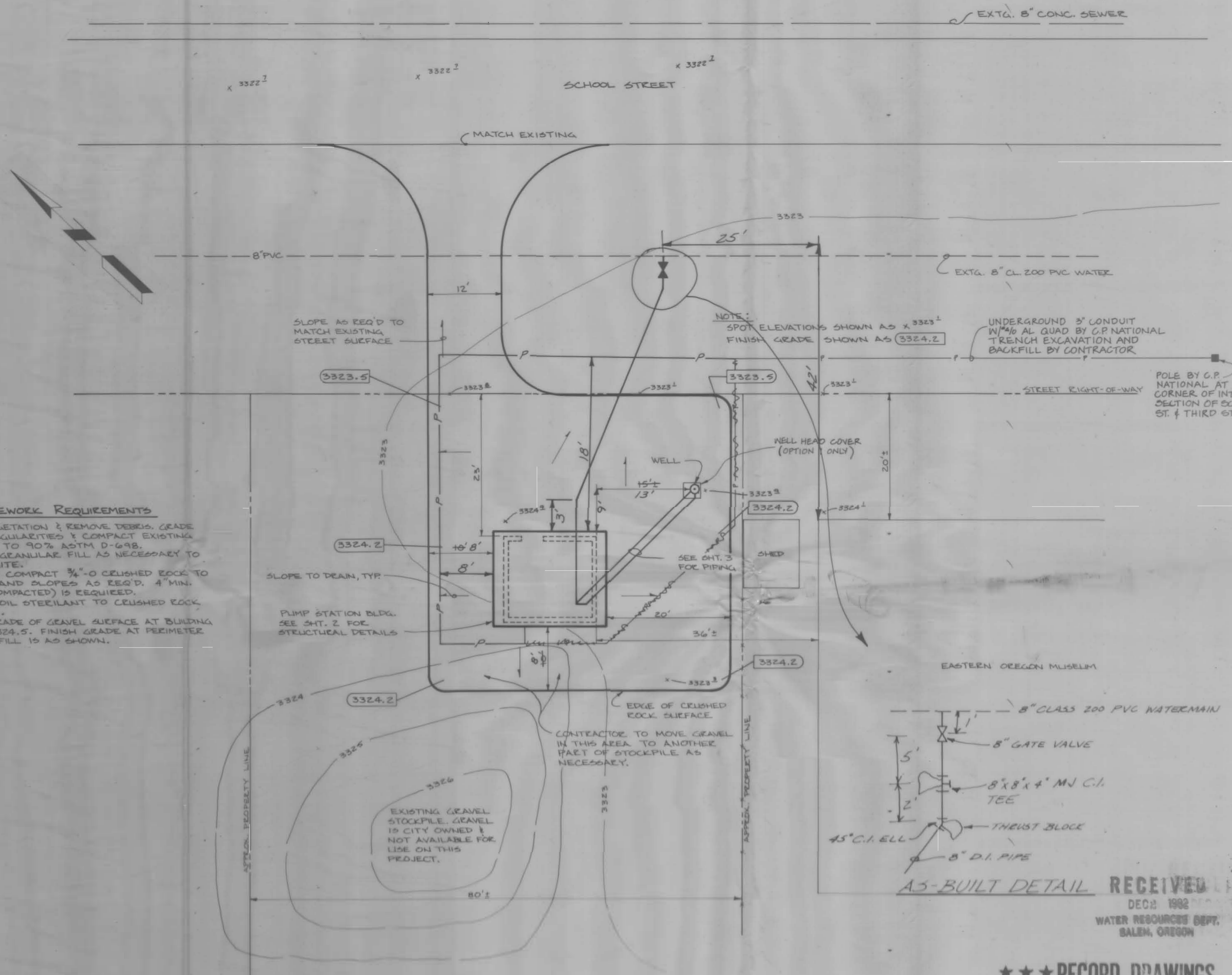
NOTE: EXISTING WELL CASING TOP ELEVATION IS 3324.45. CASING HAS TEMP STEEL PLATE CAP.



PITLESS ADAPTOR & PIPING
PUMP STATION No. 3 - Option No. 2
N.T.S.

A3-BUILT NOTE: TOP OF PUMP IS APPROX 107' BELOW TOP OF CASING. CHECK VALVE LOCATED 20' ABOVE TOP OF PUMP.

SITING REQUIREMENTS
STEP VEGETATION & REMOVE DEBRIS. GRADE OUT IRREGULARITIES & COMPACT EXISTING GROUND TO 90% ASTM D-698. PROVIDE GRANULAR FILL AS NECESSARY TO LEVEL SITE. PLACE & COMPACT 3/4" Ø CRUSHED ROCK TO GRADES AND SLOPES AS REQ'D. 4" MIN. DEPTH (COMPACTED) IS REQUIRED. APPLY SOIL STABILANT TO CRUSHED ROCK SURFACE. FINISH GRADE OF GRAVEL SURFACE AT BUILDING IS EL. 3324.5. FINISH GRADE AT PERIMETER OF SITE FILL IS AS SHOWN.



Application No. G-10853
Permit No.

Application No. G-10863
Permit No. 61007

***RECORD DRAWINGS

These record drawings have been prepared, in part, on the basis of information compiled and furnished by others. They may contain some discrepancies and omissions, and do not necessarily represent "exact" field conditions. The Owner and the Engineer accept no responsibility for their accuracy.
10/18/82 JKL



CITY OF HAINES
WATER SYSTEM IMPROVEMENTS
WELL PUMP STATION - SITE PLAN
SCALE: 1" = 10'
DATE: 1982
JOB NO: 705-03P

Anderson Perry & Associates, Inc.
LA GRANDE, ORE. & WALLA WALLA, WASH.

RECEIVED
DEC 2 1982
WATER RESOURCES DEPT.
SALEM, OREGON

CONSTRUCTION NOTES - PUMP STATIONS

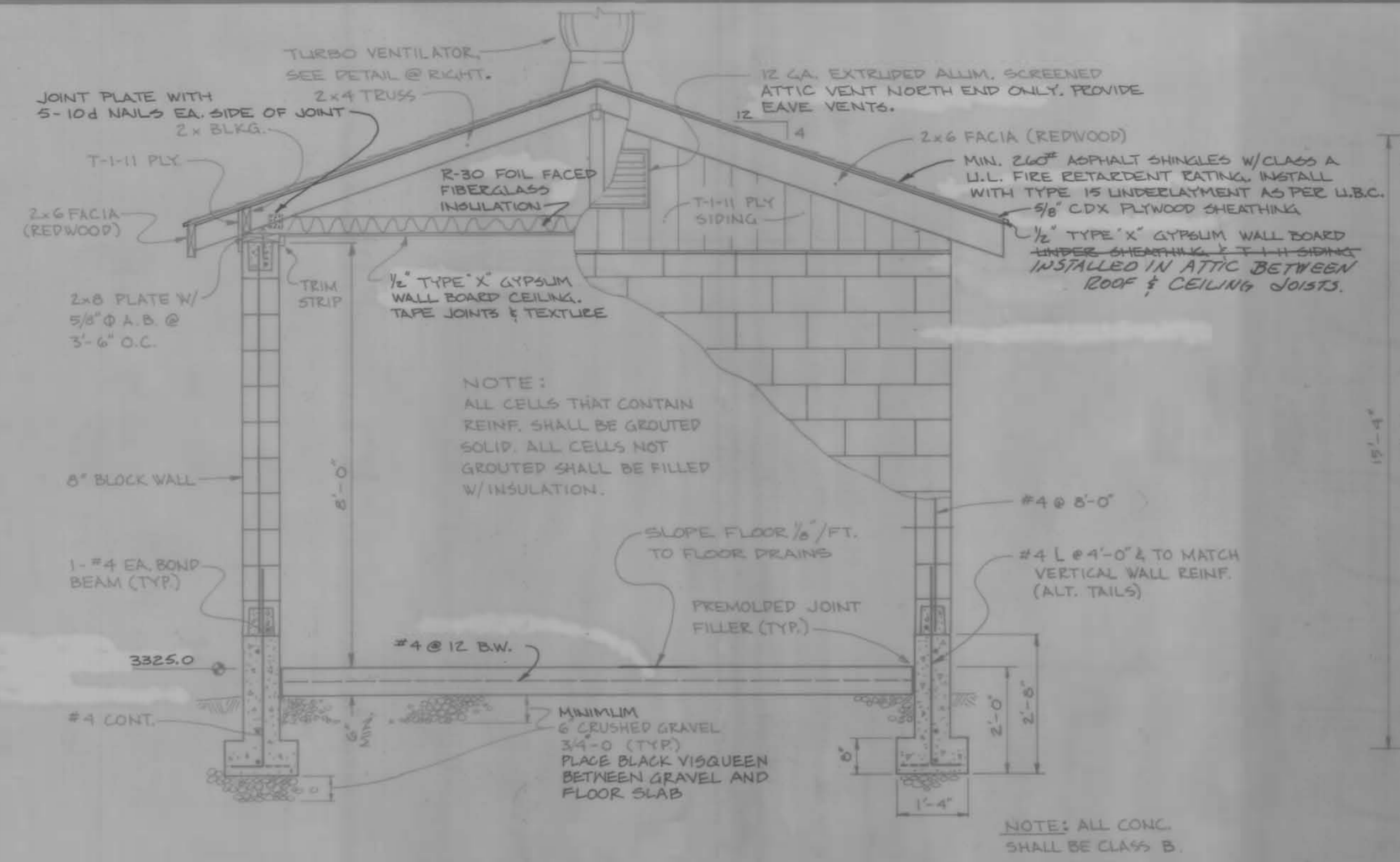
ROOF CONSTRUCTION
 2x4 TRUSS @ 1'-4" O.C. (CAPABLE OF SUPPORTING 10 PSF DL + 30 PSF LL)
 5/8" C-P EXTERIOR PLYWOOD & 1/2" GYPSUM WALLBOARDED SHEATHING
 2x6" ASPHALT SHINGLES, CLASS "A" U.L. FIRE RETARDANT EATING
 1/2" WATERPROOF GYPSUM WALLBOARDED CEILING (TYPE "X")

GABLE END CONSTRUCTION
 5/8" T-1-11 PLYWOOD SIDING OUTSIDE
 10" x 10" SCREENED LOUVER BOTH ENDS

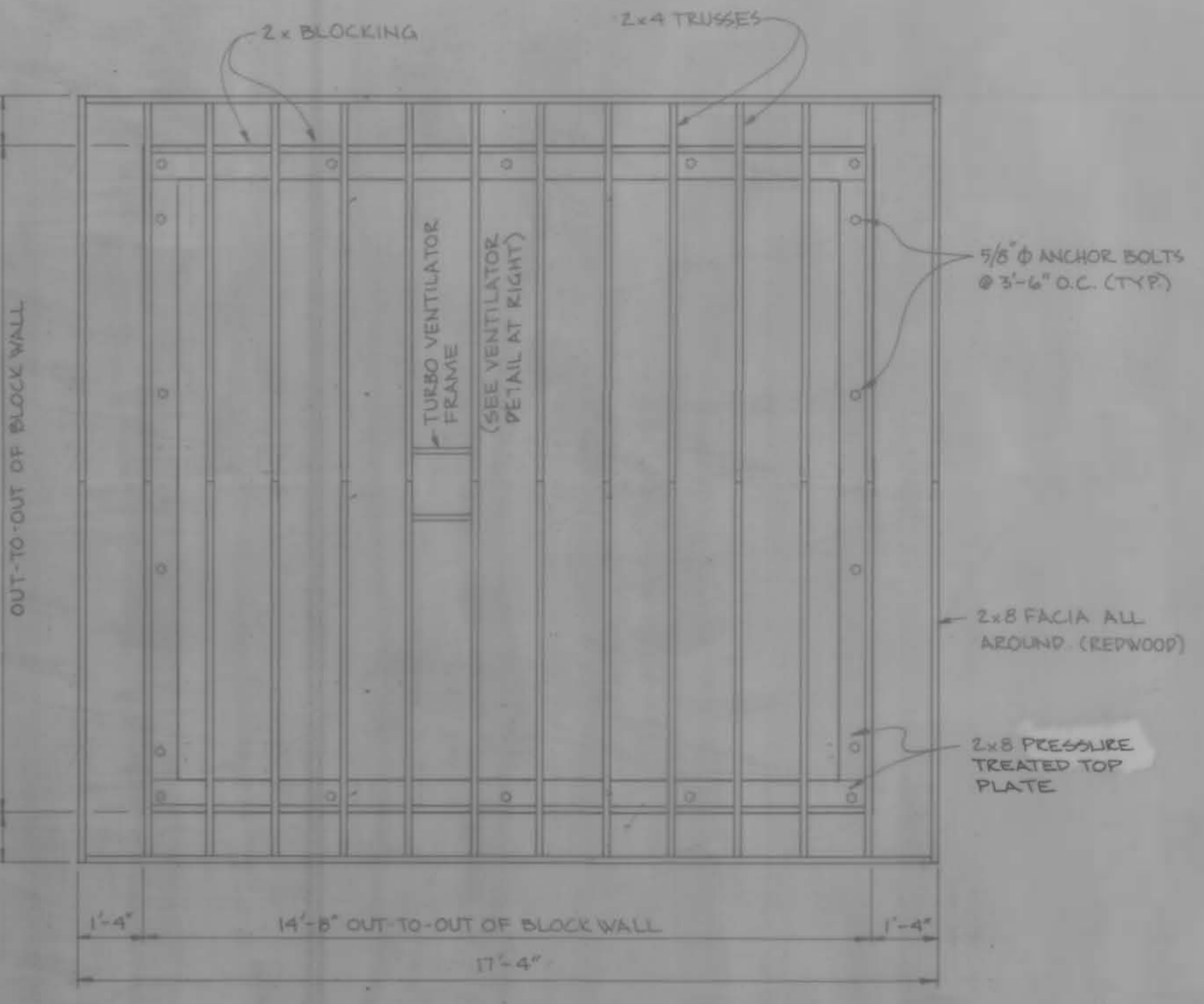
DOORS
 3'-0" x 6'-8" x 1 3/4" INSULATED HOLLOW METAL DOOR

DOOR HARDWARE
 1 - 1 1/2" PE. HINGES - FENESTER 643K (TAMPER PROOF)
 1 - LOCKSET - FENESTER 1985
 1 - STOP - FENESTER 946T
 1 - WEATHER STRIP - ZEDD 851
 1 - THRESHOLD - FENCO 114K

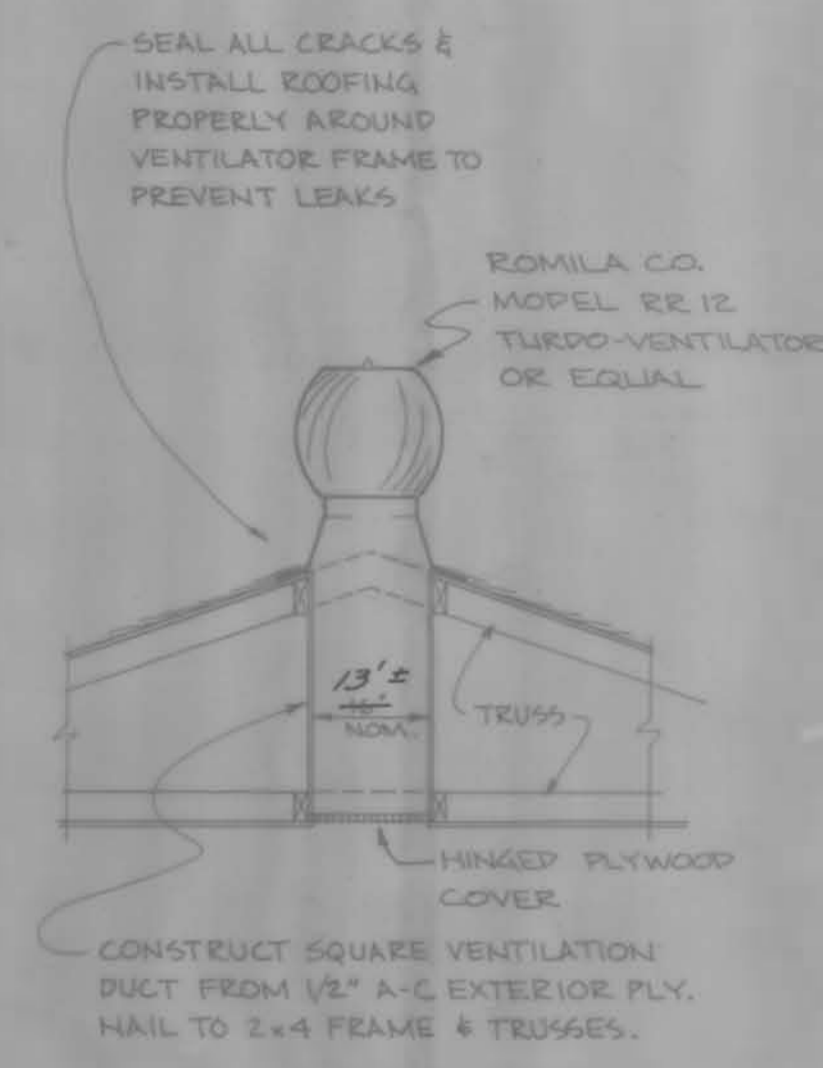
COLOR
 EXTERIOR WALLS - MEDIUM GREEN
 INTERIOR WALLS - LIGHT YELLOW
 EXTERIOR TRIM - DARK GREEN
 INTERIOR TRIM - MEDIUM YELLOW
 ALL COLORS SHALL MATCH EXACTLY THOSE USED ON THE EXISTING SEWAGE PUMP STATION



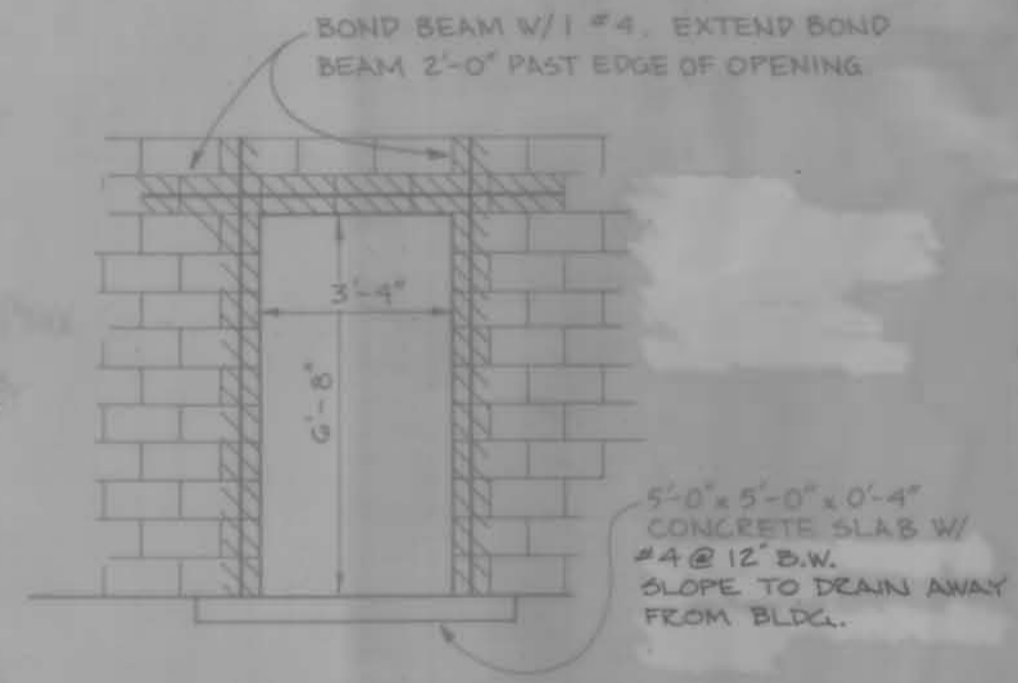
END VIEW
 1/2" = 1' - 0"



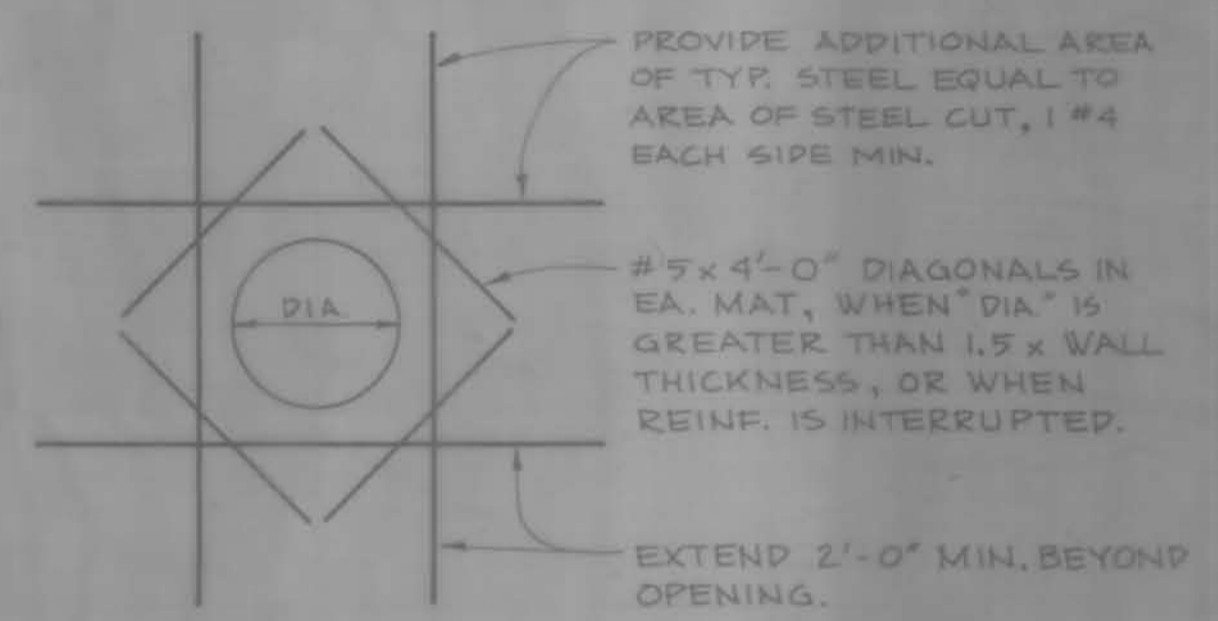
ROOF FRAMING PLAN
 3/8" = 1' - 0"



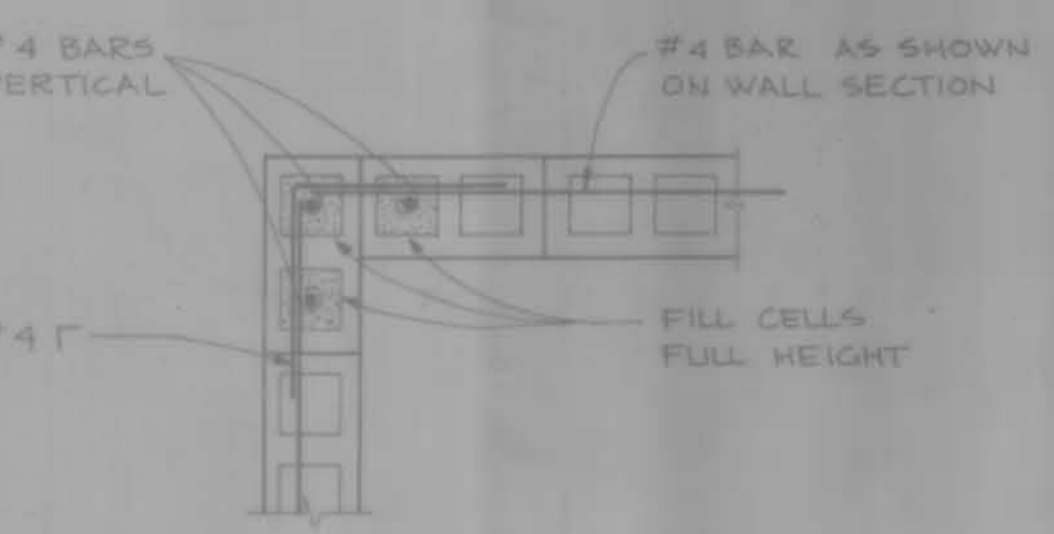
VENTILATOR DETAIL
 N.T.S.



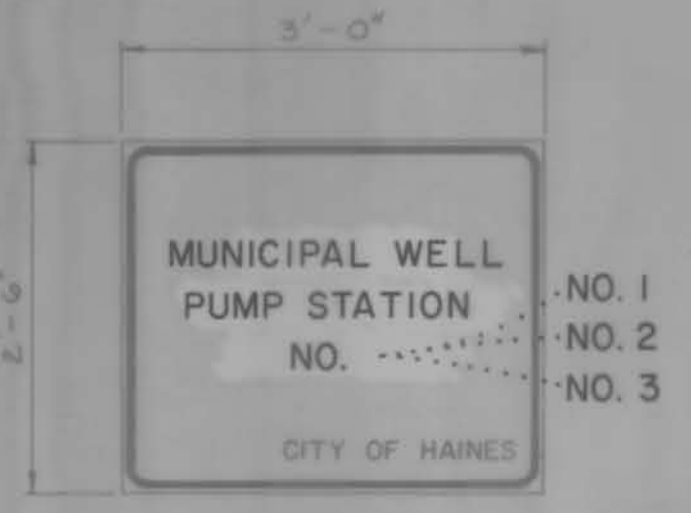
TYPICAL DOOR OPENING
 N.T.S.



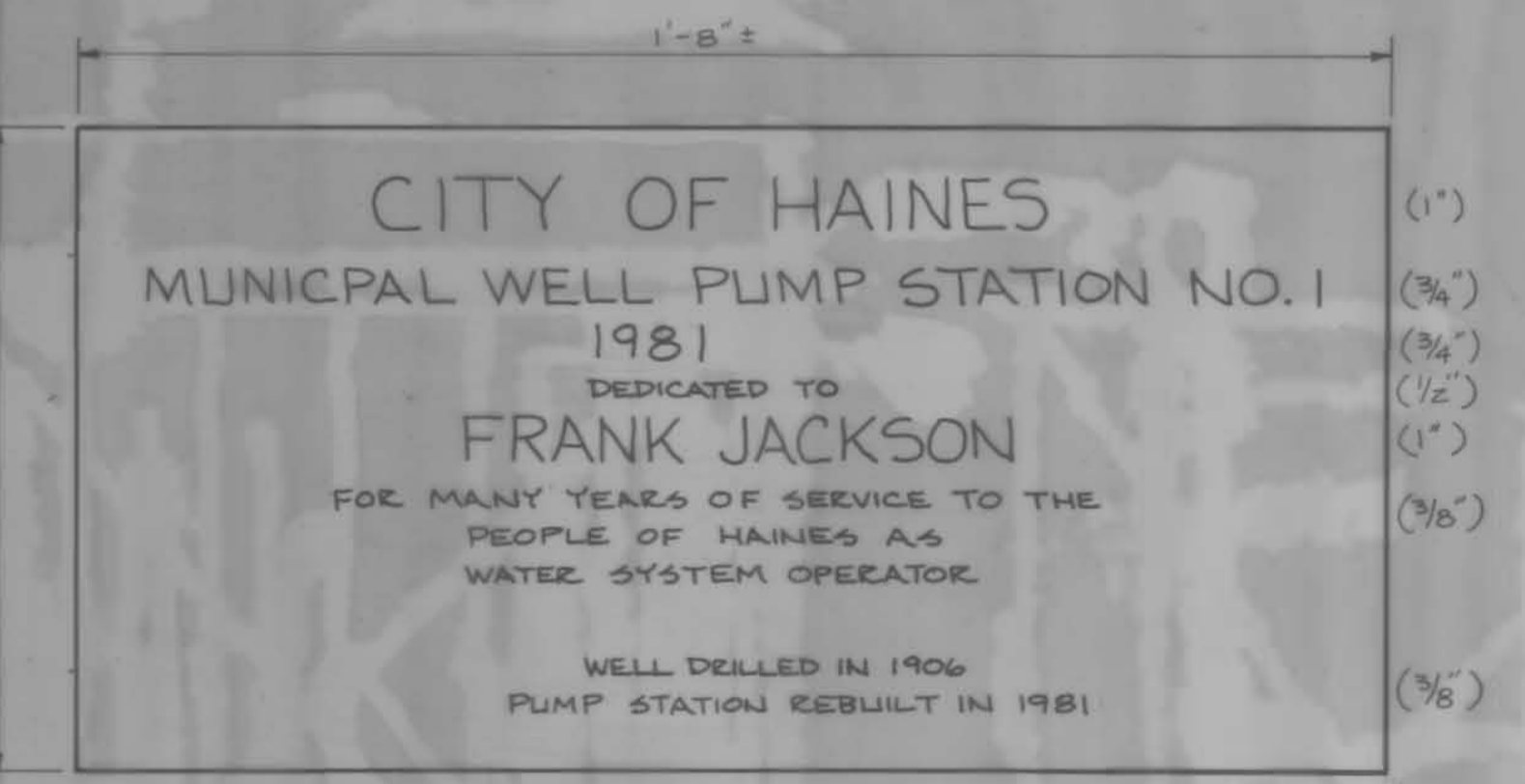
TYPICAL OPENING IN CONCRETE WALLS & SLABS
 N.T.S.



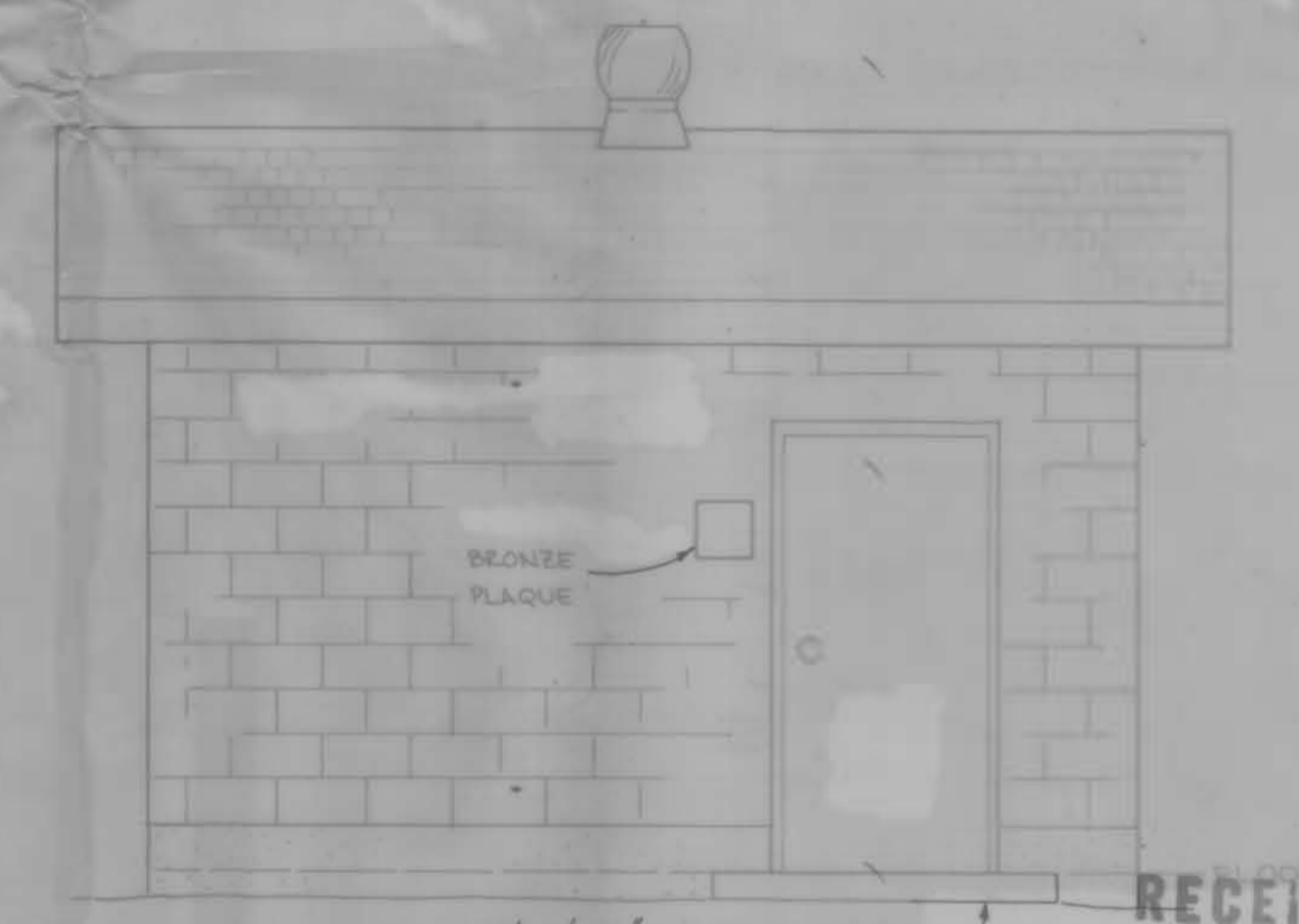
TYPICAL CORNER DETAIL
 N.T.S.



SIGN DETAIL
 N.T.S.



DEDICATION PLAQUE
 NOTE: LAYOUT & SIZE OF LETTERS IS APPROXIMATE. PLAQUE TO BE FABRICATED AS PER REQUIREMENTS OF THE SPECIFICATIONS. INSTALLATION ON PUMP STATION NO. 1 SHALL BE VANDAL PROOF AS APPROVED BY THE ENGR.



ELEVATION
 3/8" = 1' - 0"

RECEIVED
 DEC 2 1982
 WATER RESOURCES DEPT.
 SALEM, OREGON

RECORD DRAWINGS
 These record drawings have been prepared, in part, on the basis of information compiled and furnished by others. They may contain some discrepancies and omissions, and do not necessarily represent exact field conditions. The Owner and the Engineer accept no responsibility for their accuracy.
 10/12/82 JJK

CITY OF HAINES
 MUNICIPAL WELL PUMP STATION NO. 1
 1981
 DEDICATED TO
FRANK JACKSON
 FOR MANY YEARS OF SERVICE TO THE
 PEOPLE OF HAINES AS
 WATER SYSTEM OPERATOR
 WELL DRILLED IN 1906
 PUMP STATION REBUILT IN 1981

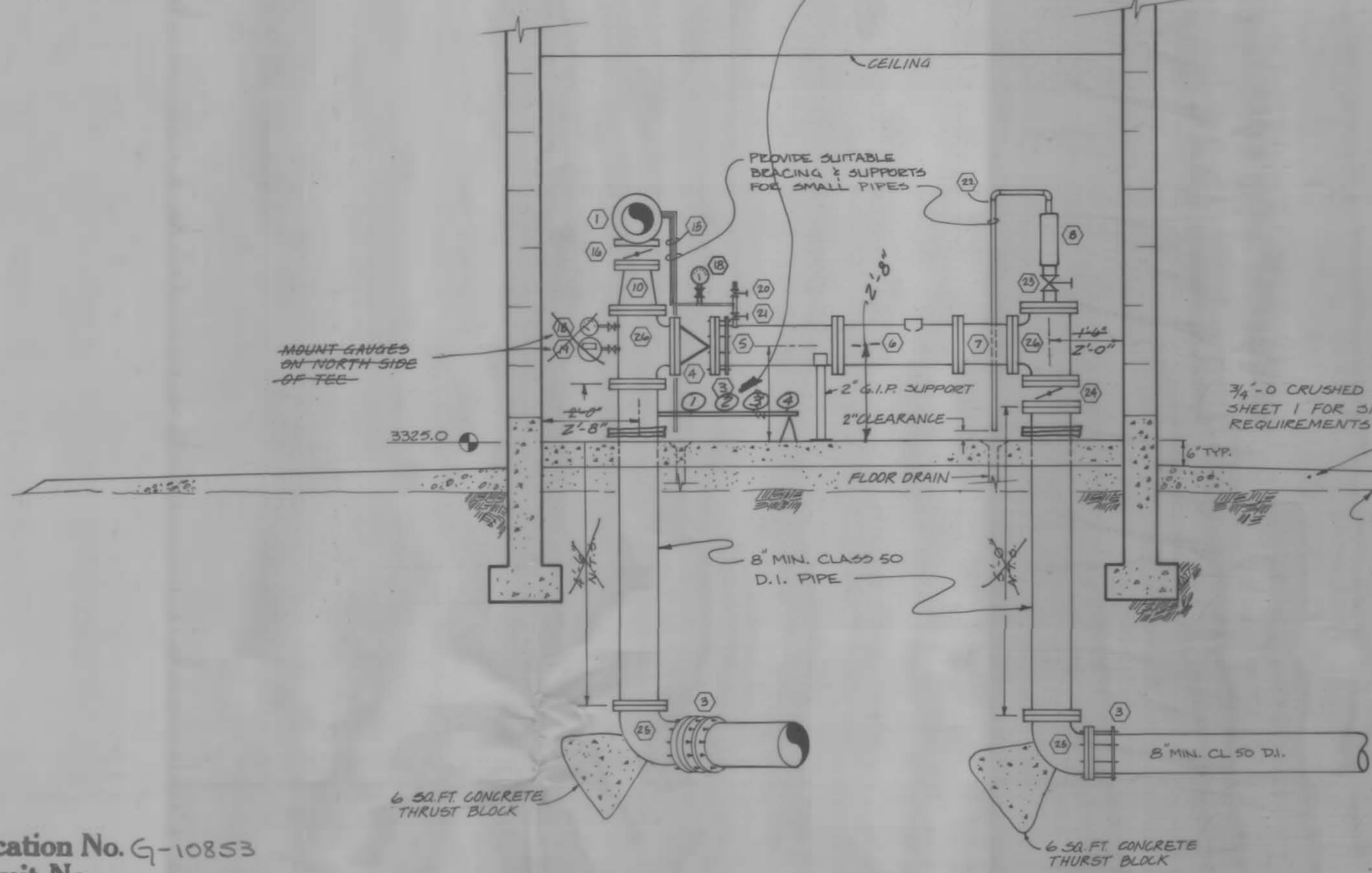
Application No. G-10853
 Permit No. G1007



CITY OF HAINES
WATER SYSTEM IMPROVEMENTS
 WELL PUMP STATION - STRUCTURAL

SCALE	AS SHOWN	SHEET NO.
DATE	1982	2
705-03P	 anderson perry & associates, inc. engineering • planning • construction LA GRANDE • ENTERPRISE • OREGON	

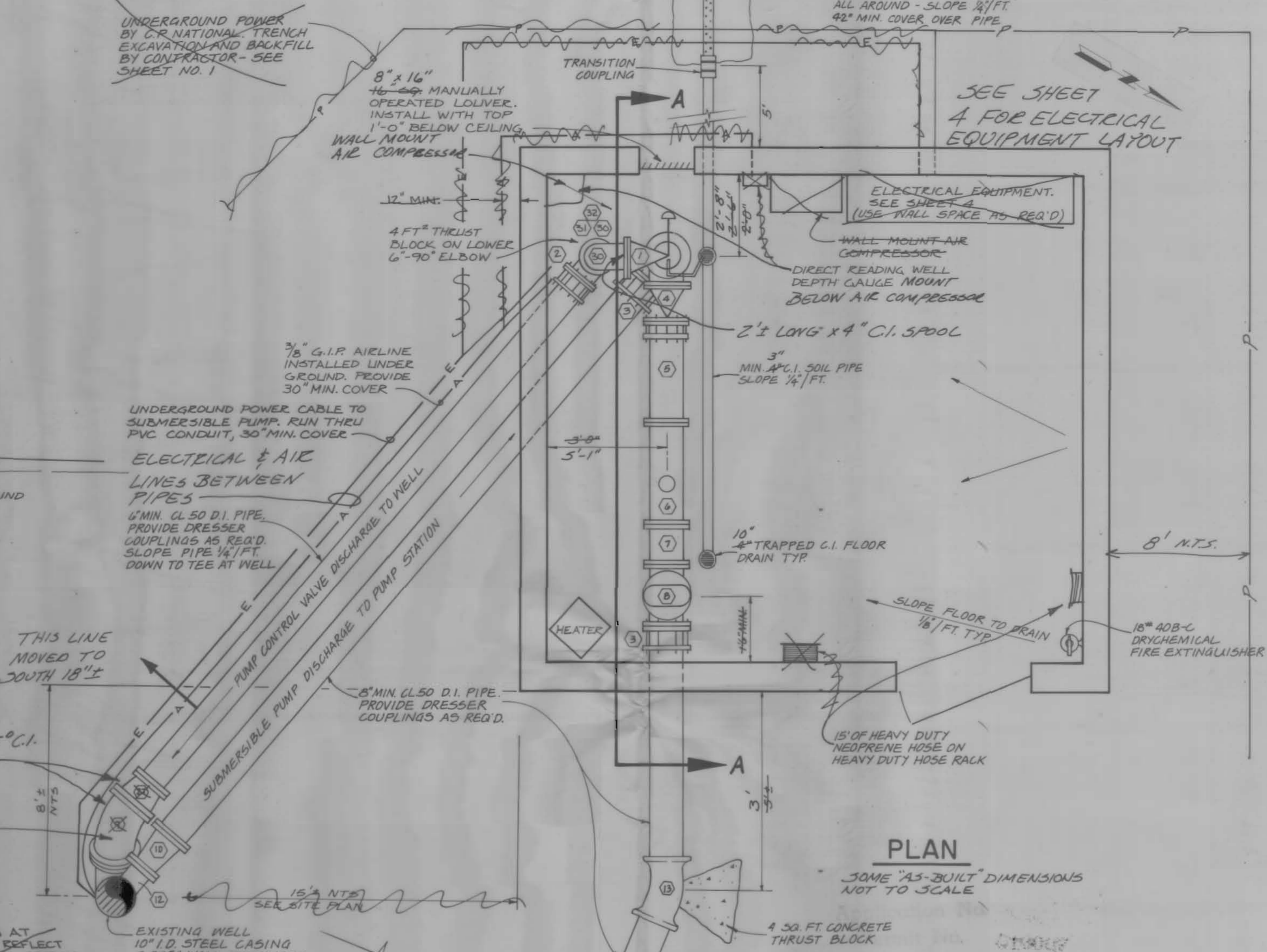
- 1 PUMP RUNNING
 - 2 LOW PRESSURE
 - 3 HIGH PRESSURE
 - 4 PRESSURE GAUGE 0-100psi
- MERCURY PRESSURE SWITCHES



SECTION A
SOME "AS-BUILT" DIMENSIONS NOT TO SCALE

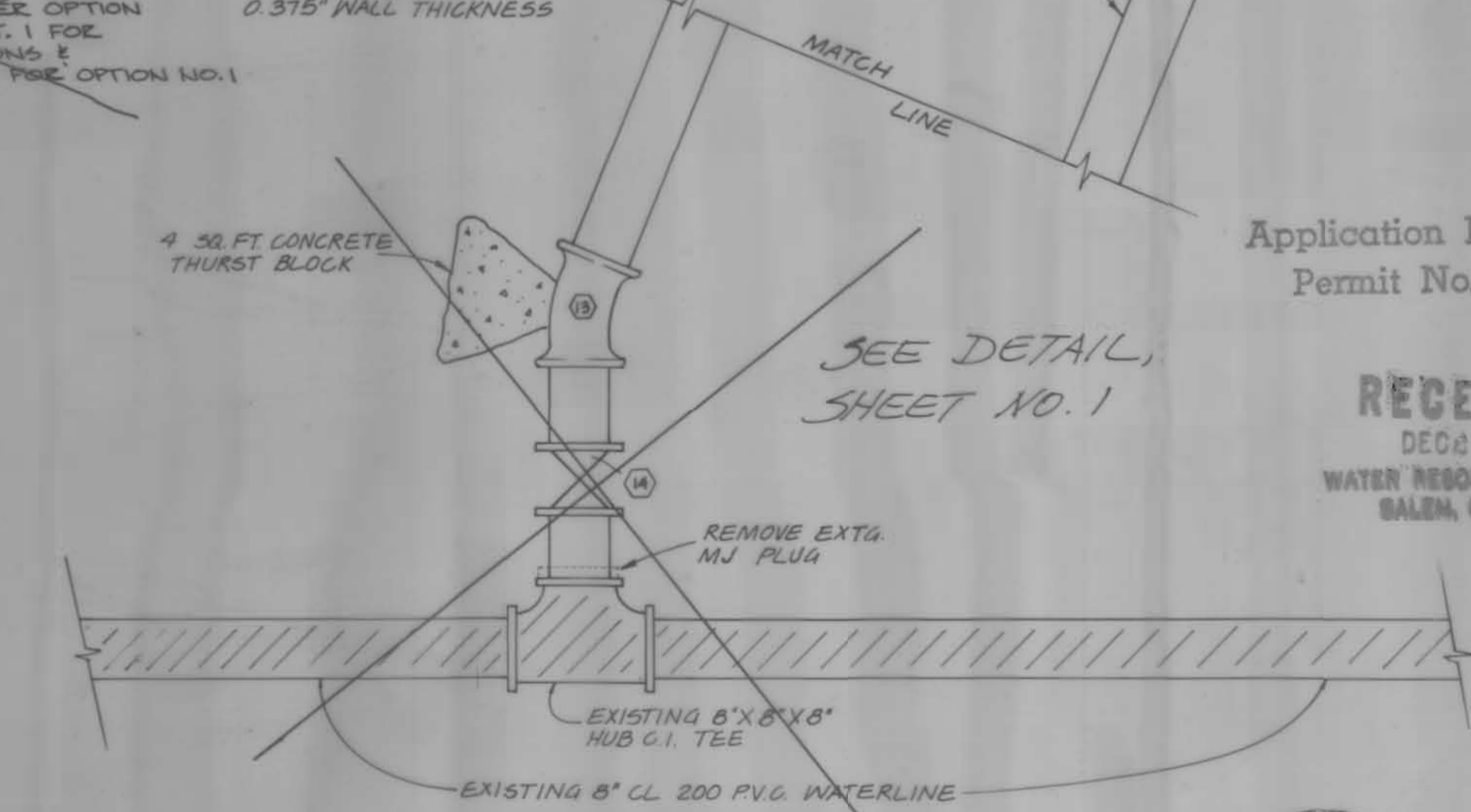
Application No. G-10853
Permit No.

- FITTING SCHEDULE**
See Specifications for any additional details
- 1 4" Right Angle Pump Control Valve
 - 2 6" Flg. Coupling Adaptor w/lock pins
 - 3 8" Flg. Coupling Adaptor w/lock pins
 - 4 8" APCD Silent Check Valve (globe type)
 - 5 8" Flg. x PE C.I. Spool 2'-6" long
 - 6 8" Flg. x Flg. Propeller Flowmeter. Provide spare blind flange.
 - 7 8" Flg. x Flg. C.I. Spool 12" long
 - 8 2" APCD 2" 145 C Combination Air Release Valve
 - 9 10" Flg. C.I. Elbow, angle as Required
 - 10 6" x 8" C.I. Flg. Reducer
 - 11 10" I.D. PE x 10" I.D. PE x 10" FLG steel 45° Lateral
 - 12 Pitless Adaptor
 - 13 8" - 22 1/2" C.I. Push-on Elbow
 - 14 8" Gate Valve with Extended Operator nut and C.I. Valve Box
 - 15 Copper Tubing Supply Line to Control Valve; and Drain Line
 - 16 4" Butterfly Valve with Hand Crank Operator
 - 17 Filter (see specifications)
 - 18 0-100 psi Pressure Gauge with Isolation Valve
 - 19 Mercury Pressure Switch with Isolation Valve
 - 20 125 psi Rated Angle Globe Valve with Hose Adaptor
 - 21 125 psi Rated 3/4" Bronze Gate Valve
 - 22 2" G.I.P.
 - 23 2" Bronze Gate Isolation Valve
 - 24 8" Butterfly Valve with Hand Crank Operator and Position Indicator
 - 25 8"-90° C.I. Elbow
 - 26 8" Flg. Tee
 - 27 6" x 10" Flg. C.I. Reducer
 - 28 Deleted
 - 29 Deleted
 - 30 4" - 90° Flg. C.I. Elbow & Flg. Coupling adaptor
 - 31 6" Flg. C.I. Spool. Length as required.
 - 32 4"x6" FLG Reducer



PLAN
SOME "AS-BUILT" DIMENSIONS NOT TO SCALE

NOTE:
FITTINGS SHOWN AT EXISTING WELL REFLECT PITLESS ADAPTER OPTION NO. 2. SEE SHT. 1 FOR WELL ELEVATIONS & FITTINGS REQ'D FOR OPTION NO. 1



SEE DETAIL, SHEET NO. 1

***** RECORD DRAWINGS**

These record drawings have been prepared, in part, on the basis of information compiled and furnished by others. They may contain some discrepancies and omissions, and do not necessarily represent "exact" field conditions. The Owner and the Engineer accept no responsibility for their accuracy.
10/12/82 JPK

Application No. G-10853
Permit No. G10007

RECEIVED
DEC 2 1982
WATER RESOURCES DEPT.
SALEM, OREGON

NOTE
THESE DRAWINGS DO NOT SHOW THE PRESENCE, LOCATION, POSITION, OR APPLICATION OF SAFETY DEVICES UPON OR SURROUNDING MACHINERY AND/OR EQUIPMENT. IT IS THE SOLE RESPONSIBILITY OF THE EQUIPMENT MANUFACTURER AND CONTRACTOR TO PLACE PROPERLY ALL SAFETY DEVICES UPON OR SURROUNDING MACHINERY AND/OR EQUIPMENT AND TO INSTRUCT THE OPERATORS UPON THEIR APPLICATION.



CITY OF HAINES
WATER SYSTEM IMPROVEMENTS

WELL PUMP STATION - MECHANICAL

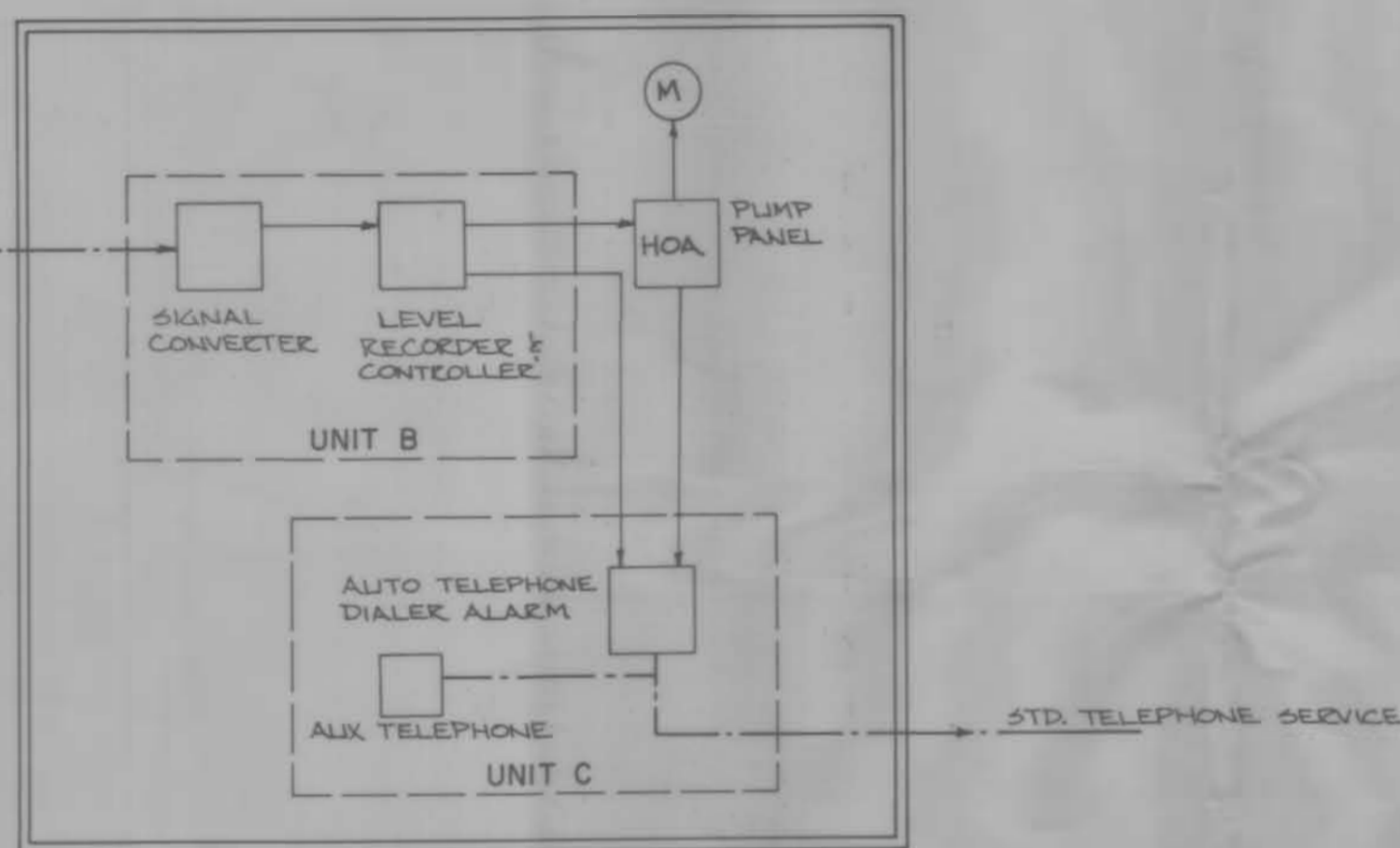
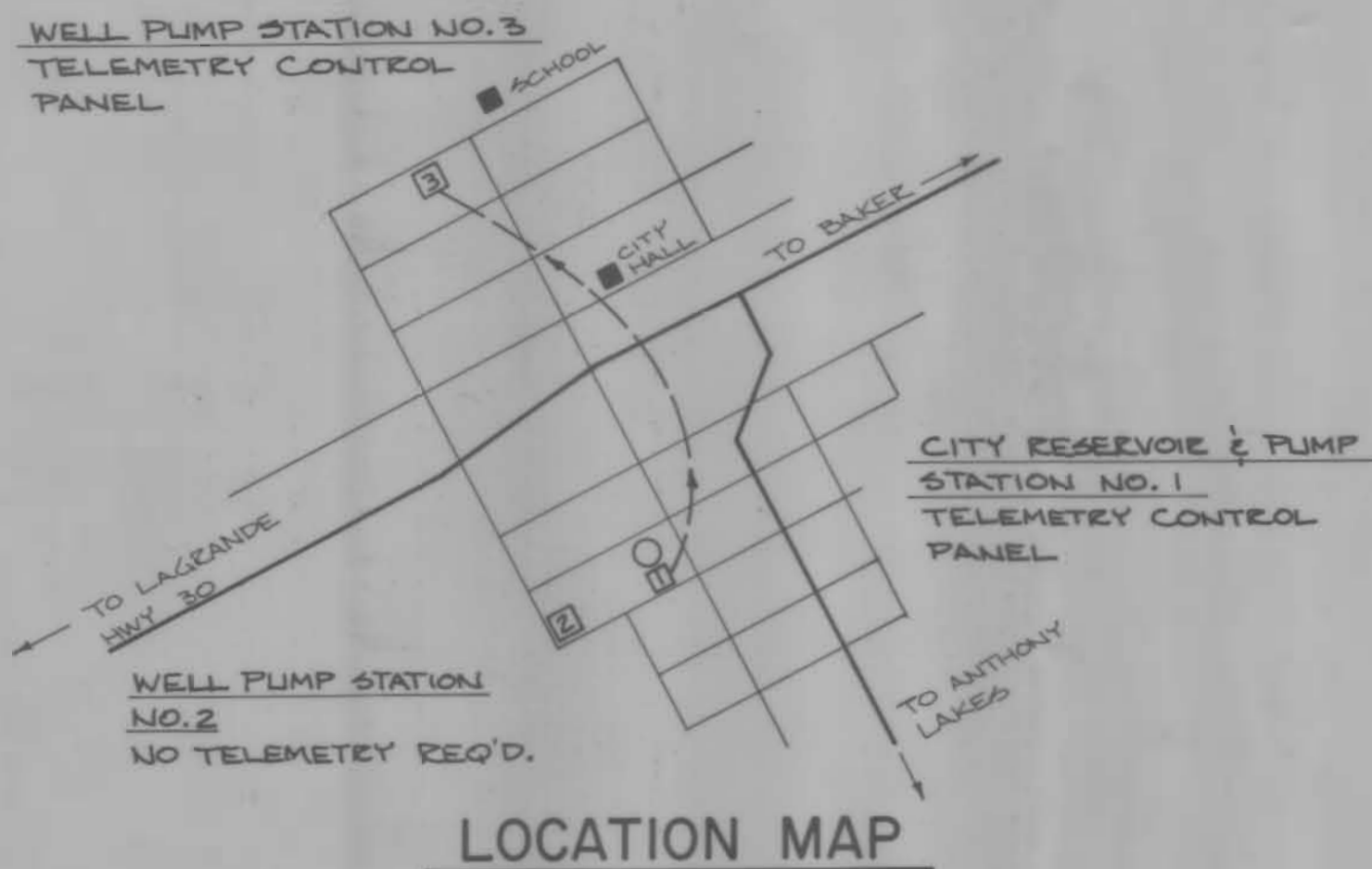
SCALE: 1/2" = 1'

DATE: 1982

JOB NO: 705-03P

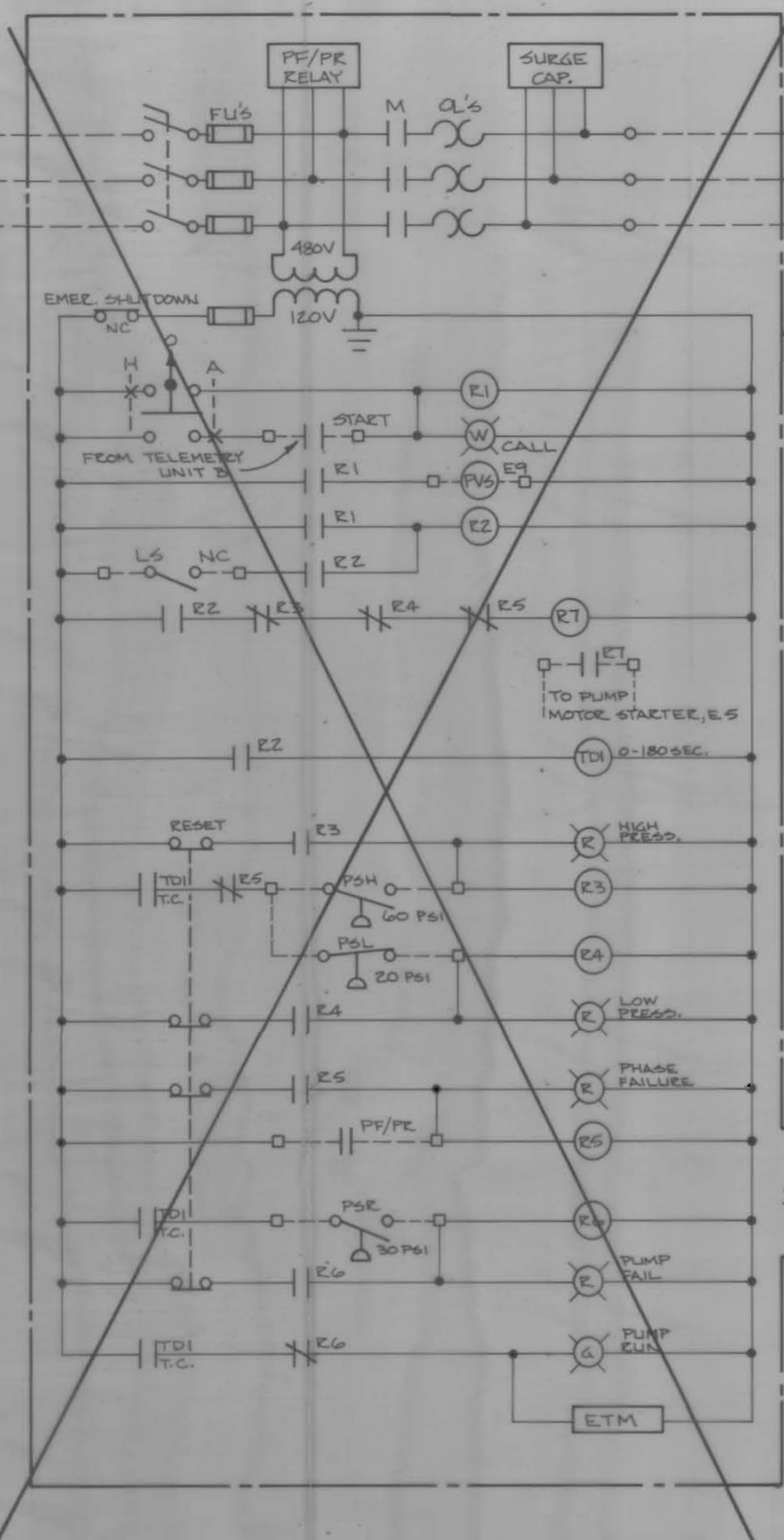
anderson perry & associates, inc.
engineering • surveying • materials testing
LA GRANDE, ORE. & WALLA WALLA, WASH.

SHEET NO. 3



TELEMETRY SCHEMATIC

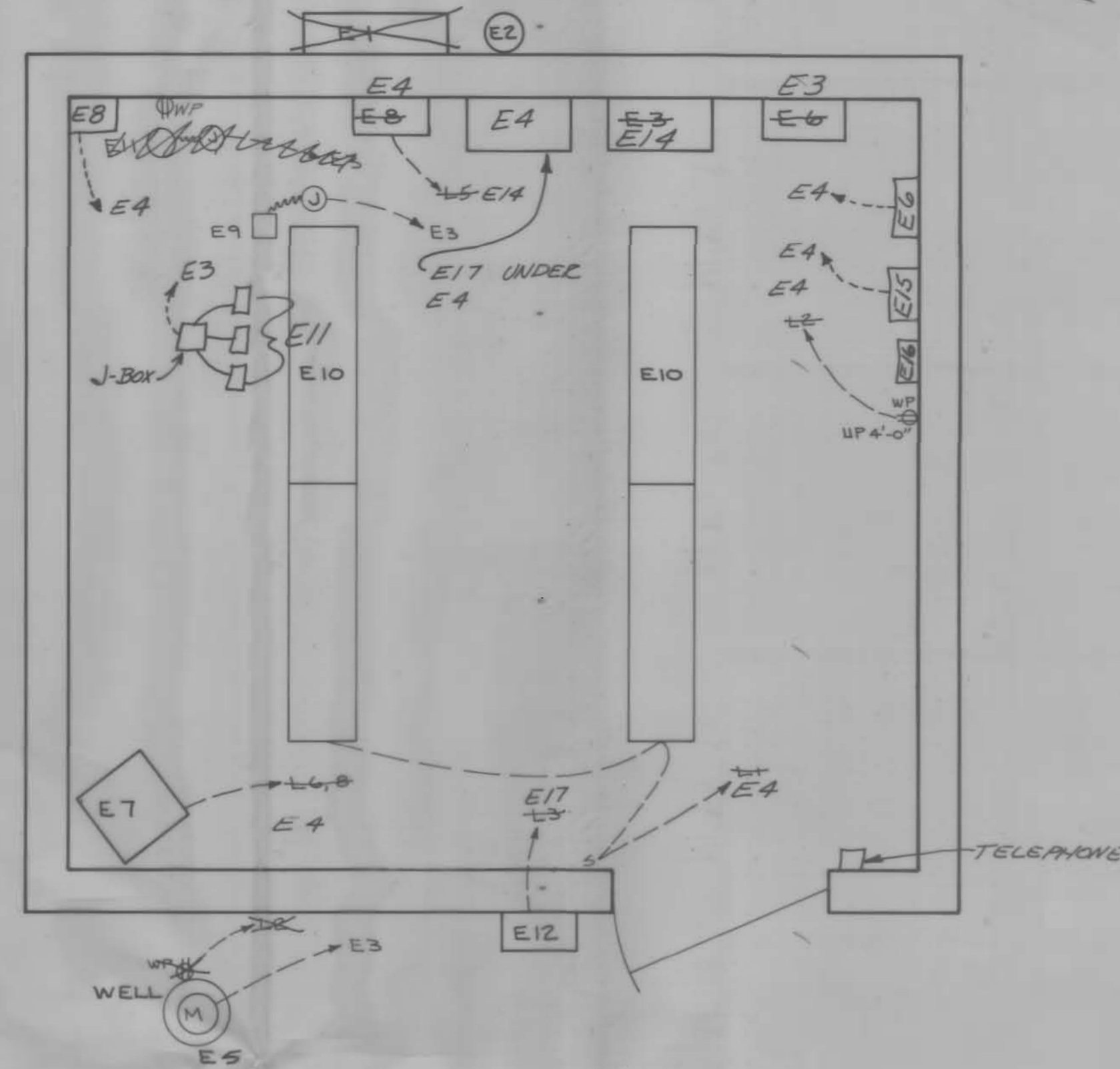
- LEGEND**
- FACTORY WIRING
 - - - FIELD WIRING
 - R CONTROL RELAY, 120V CONTACTS AS SHOWN
 - TD1 TIME DELAY RELAY, 120V 0-100 SEC. CONTACTS AS SHOWN
 - PVS SOLENOID VALVE AT PUMP CONTROL VALVE
 - LS LIMIT SWITCH ON PUMP CONTROL VALVE
 - PSL MERCOID TRIPLEX PRESSURE SWITCH, LOW PRESS, HIGH PRESS, RUN
 - PSH RED LAMP
 - PSR WHITE LAMP
 - PSG GREEN LAMP



PUMP CONTROL DIAGRAM

PUMP STATION NO. 3

SEE AS-BUILT WIRING DIAGRAM IN SEPERATE OPERATION & MAINT. MANUAL



ELECTRICAL

- EQUIPMENT LIST**
See Specifications for any additional details
- E1 C.T.'s and C.T. Can - C.T.'s by utility company, C.T. Can by Contractor - size as required. Underground service required.
 - E2 Meter and meter base - as required by utility company.
 - E3 Combination Starter - 3-pole, 480 v. with FRS fuses, NEMA starter with quick trip ambient compensated overloads (sized per pump supplier's recommendation), lightning arrestors, surge capacitors, phase/failure/reversal relay, elapsed time meter, H-O-A selector switch, etc., indicating lights, control XFMR, etc., as required all in NEMA 1 enclosure (see pump control diagram). 25KVA
 - E4 Mini-Power Centers - 480 V. 1-phase primary; 120/240 v. 1-phase, 100 AMP secondary, with 2-pole primary and secondary circuit breakers, branch breakers as required; provide minimum 2 spares.
 - E5 Submersible Pump Motor - 60 hp, 460 v., 3-phase. See Specifications.
 - E6 Telemetry Panel - See Technical Specifications.
 - E7 Unit Heater - 3 kw, 240 v., 1-phase with thermostat.
 - E8 Air Compressor. See Specifications.
 - E9 Pump Control Valve Solenoid Valve.
 - E10 Fluorescent Light Fixtures - 4 required; two 48" tubes each, 40 watts, rapidstart, cool white lamps, 120 v. wrap arounds.
 - E11 Pressure Switch. See Specifications.
 - E12 250 Watt 120V Mercury Vapor Light Hubbell Entraliter 5825 or equal with guard and photo electric control.
 - E13 750 Watt, 120V, 1 phase, 3-wire Portable Heater with auto thermostat. Overheat and tipover protection required. Option 1 only.
 - E14 MAIN DISCONNECT ON PRIMARY OF TRANSFORMER, 480 V., 1-PHASE
 - E15 SPARKING RESERVOIR LEVEL RECORDER
 - E16 ADAS II AUTO TELEPHONE DIALER
 - E17 McCROMETER FLOW RECORDER

SUBMERSIBLE PUMP & MOTOR
PUMP: PEELESS 8HX 3 BOWL
 60 hp 3500 r.p.m. SERIAL# 1700Z
 800 g.p.m. @ 200 ft TDH
MOTOR: FRANKLIN MDL. 23910Z900
 3525 r.p.m. 89 AMP
 MIN FLOW 0.5 ft/sec PAST MOTOR
 DUTY CODE J
 SF 1.15

Application No. G-10853
Permit No. G10007

RECORD DRAWINGS

These record drawings have been prepared, in part, on the basis of information compiled and furnished by others. They may contain some discrepancies and omissions, and do not necessarily represent "exact" field conditions. The Owner and the Engineer accept no responsibility for their accuracy.

RECEIVED
DEC 2 1982
WATER RESOURCES DEPT.
SALEM, OREGON

NOTE: THESE DRAWINGS DO NOT SHOW THE PRESENCE, LOCATION, POSITION, OR APPLICATION OF SAFETY DEVICES UPON OR SURROUNDING MACHINERY AND/OR EQUIPMENT. IT IS THE SOLE RESPONSIBILITY OF THE EQUIPMENT MANUFACTURER AND CONTRACTOR TO PLACE PROPERLY ALL SAFETY DEVICES UPON OR SURROUNDING MACHINERY AND/OR EQUIPMENT AND TO INSTRUCT THE OPERATORS UPON THEIR APPLICATION.

CITY OF HAINES
WATER SYSTEM IMPROVEMENTS
WELL PUMP STATION - ELECTRICAL & TELEMETRY

SCALE: NO SCALE
DATE: 1982
JOB NO: 705-03P

Anderson Perry & Associates, Inc.
engineers • architects • interior design
LA GRANDE, ORE. & WALLA WALLA, WASH.

SHEET NO. **4**