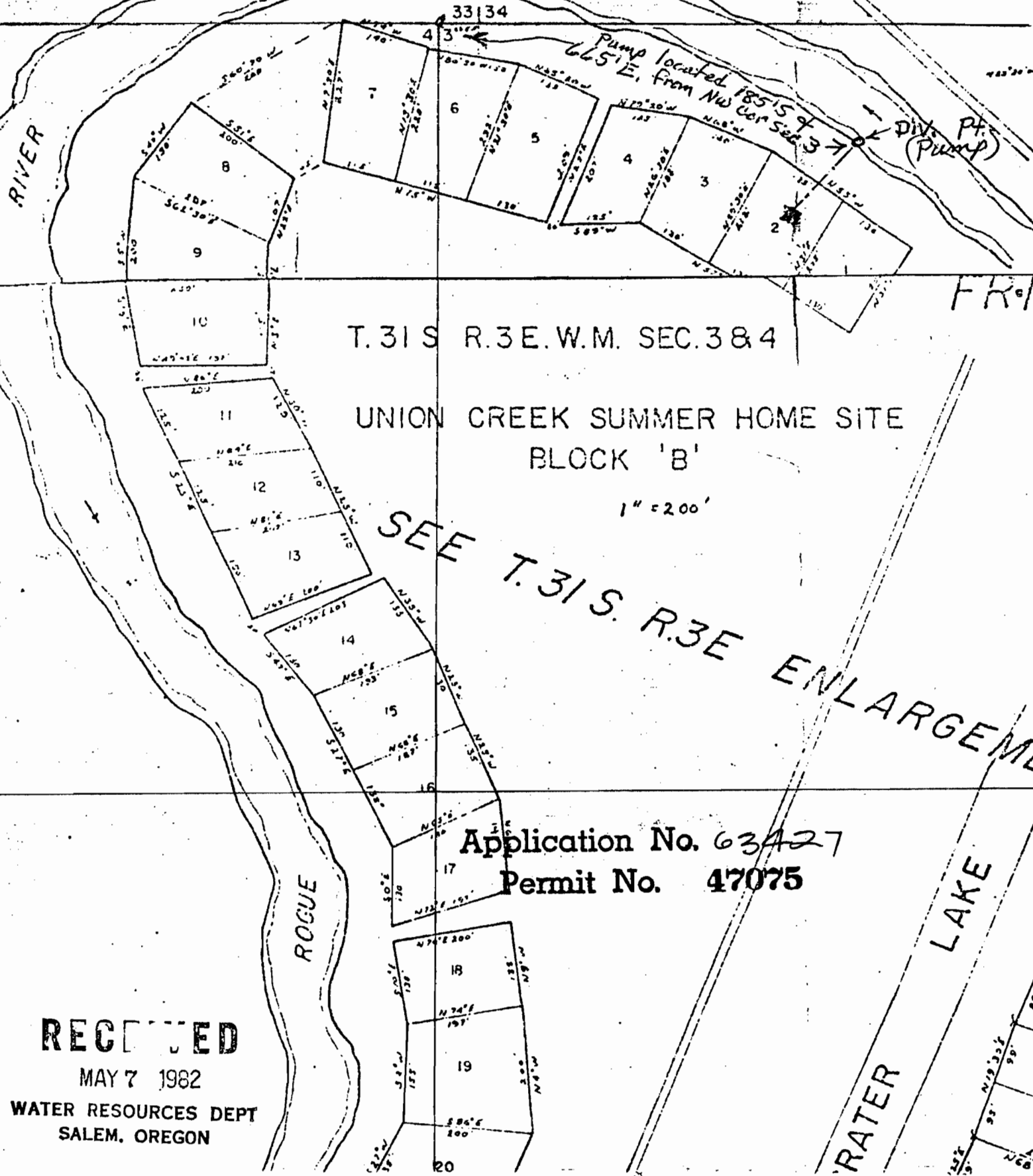


SW 1/4 SE 1/4



T. 31 S. R. 3 E. W.M. SEC. 3 & 4

UNION CREEK SUMMER HOME SITE  
BLOCK 'B'

1" = 200'

SEE T. 31 S. R. 3 E ENLARGEMENT

Application No. 63427

Permit No. 47075

**RECEIVED**

MAY 7 1982

WATER RESOURCES DEPT  
SALEM, OREGON

WATER LAKE