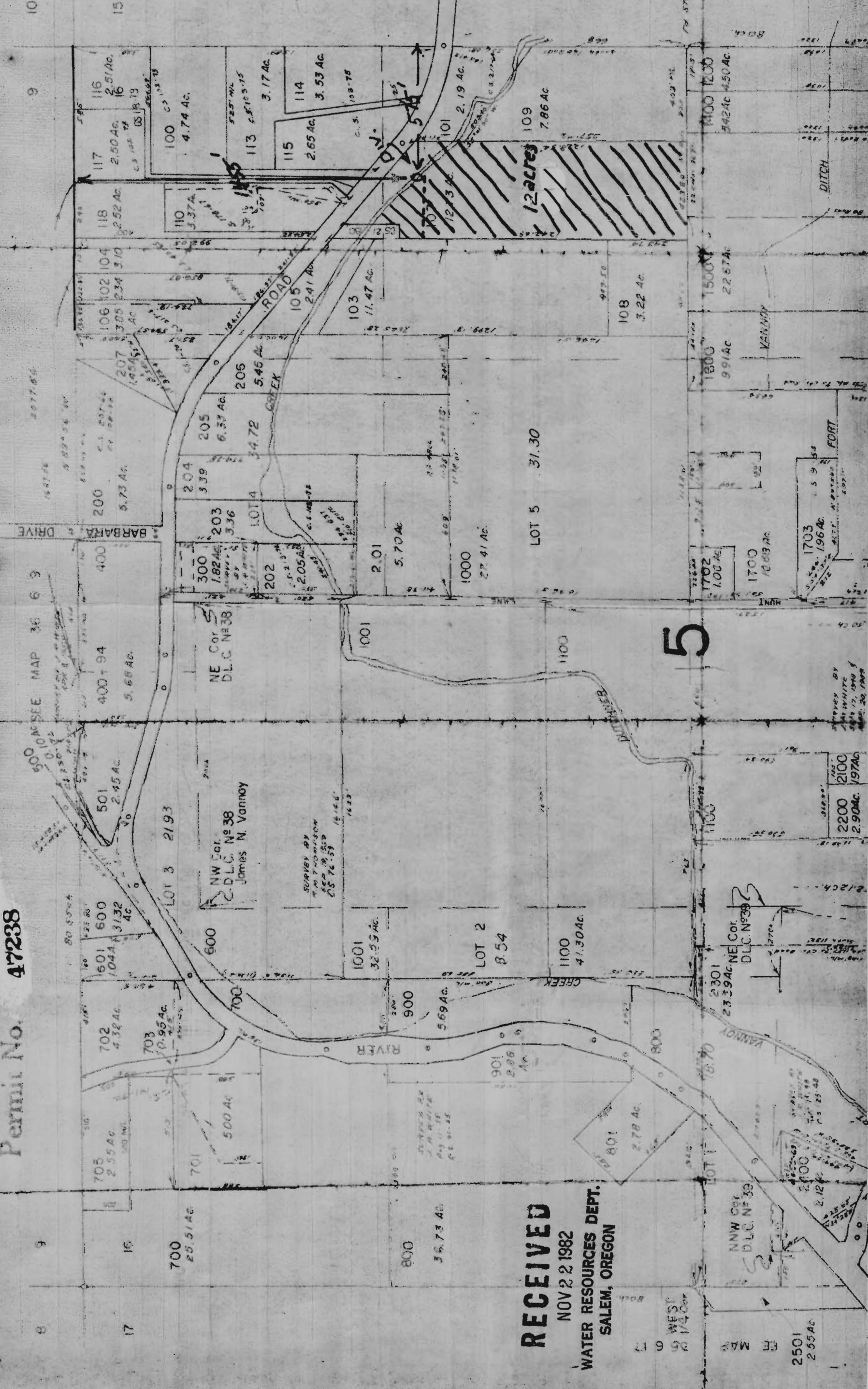


SECTION 16 T36S R6W W.M.  
JOSEPHINE COUNTY

Application No. 64546  
Permit No. 47238

1" = 400'



CANCELLED T.L.  
2801  
1701  
112  
790  
301  
290  
190  
2802  
791  
792  
1801  
704  
2701  
111  
302  
2590

SEE MAP 36 6 15

**RECEIVED**  
NOV 22 1982  
WATER RESOURCES DEPT.  
SALEM, OREGON

2501  
2.55 AC  
FR MAP  
WEST  
1/4 COR

SURVEY BY  
JAMES WHITE  
APR 17, 1940  
MAP 36 6 10