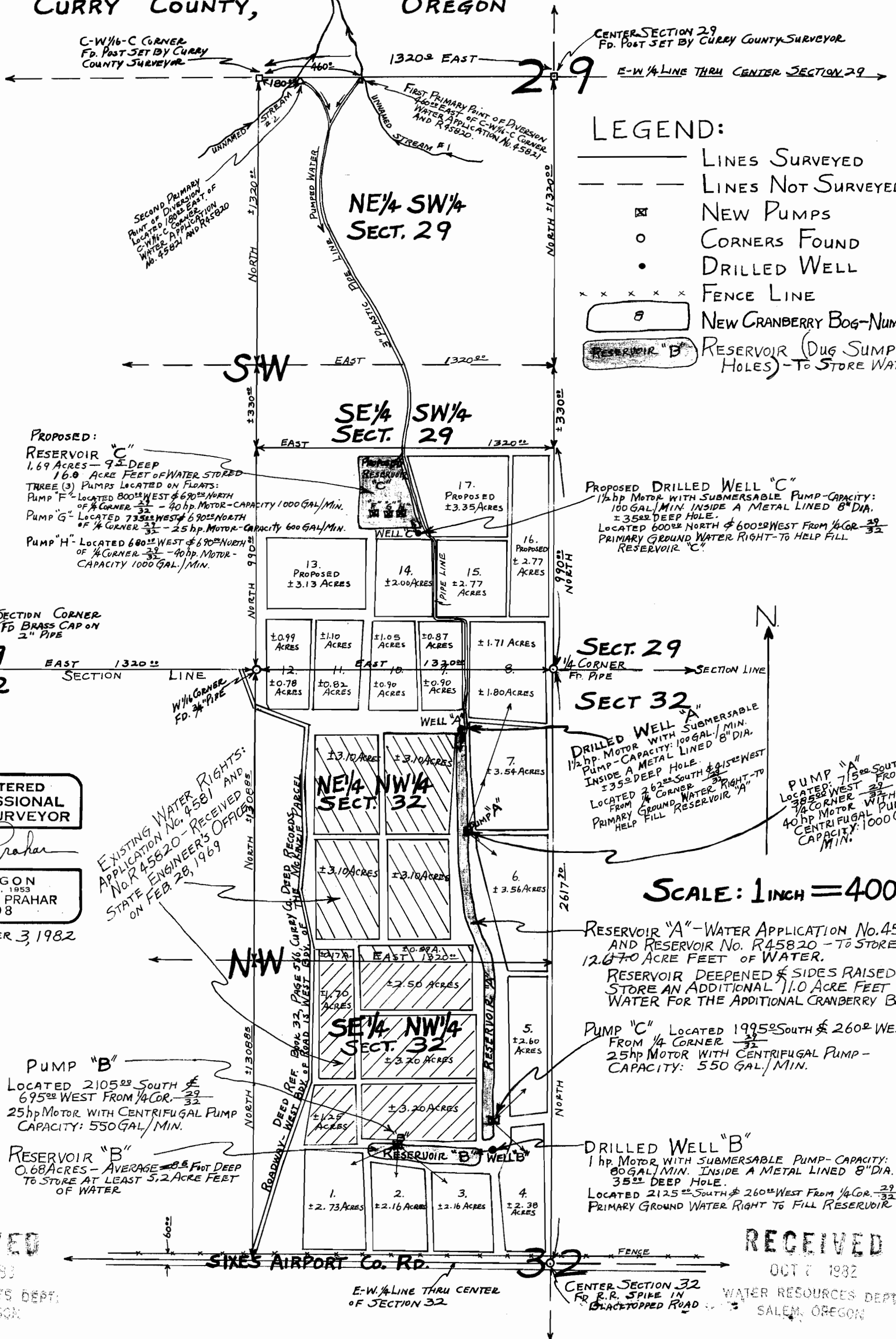


6-10867, R-64419, 64420

G10027 R 8604 47420

APPLICATION FOR WATER RIGHTS

FOR ROBERT G. MCKENZIE, JR. SECTIONS 29 & 32, T.31S., R.15W.W.M.,
CURRY COUNTY, OREGON



- ### LEGEND:
- LINES SURVEYED
 - - - LINES NOT SURVEYED
 - ⊠ NEW PUMPS
 - CORNERS FOUND
 - DRILLED WELL
 - x x x x x FENCE LINE
 - ⊡ NEW CRANBERRY BOG-NUMBERED
 - ⊡ RESERVOIR "B" RESERVOIR (DUG SUMP HOLES)-TO STORE WATER

PROPOSED:
RESERVOIR "C"
1.69 ACRES - 9' DEEP
16.8 ACRE FEET OF WATER STORED
THREE (3) PUMPS LOCATED ON FLOATS:
PUMP "F" - LOCATED 800' WEST & 690' NORTH OF 1/4 CORNER 32 - 40 hp. MOTOR - CAPACITY 1000 GAL./MIN.
PUMP "G" - LOCATED 735' WEST & 690' NORTH OF 1/4 CORNER 32 - 25 hp. MOTOR - CAPACITY 600 GAL./MIN.
PUMP "H" - LOCATED 680' WEST & 690' NORTH OF 1/4 CORNER 32 - 40 hp. MOTOR - CAPACITY 1000 GAL./MIN.

PROPOSED DRILLED WELL "C"
1 1/2 hp. MOTOR WITH SUBMERSABLE PUMP - CAPACITY: 100 GAL./MIN. INSIDE A METAL LINED 8" DIA. 35' DEEP HOLE.
LOCATED 600' NORTH & 600' WEST FROM 1/4 COR. 32
PRIMARY GROUND WATER RIGHT - TO HELP FILL RESERVOIR "C"

DRILLED WELL "A"
1 1/2 hp. MOTOR WITH SUBMERSABLE PUMP - CAPACITY: 100 GAL./MIN. INSIDE A METAL LINED 8" DIA. 35' DEEP HOLE.
LOCATED 262' SOUTH & 415' WEST FROM 1/4 CORNER 32
PRIMARY GROUND WATER RIGHT - TO HELP FILL RESERVOIR "A"

PUMP "A"
LOCATED 715' SOUTH & 385' WEST FROM 1/4 CORNER 32
40 hp. MOTOR WITH CENTRIFUGAL PUMP CAPACITY: 1000 GAL./MIN.

RESERVOIR "A" - WATER APPLICATION No. 45821 AND RESERVOIR No. R45820 - TO STORE 12.670 ACRE FEET OF WATER.

RESERVOIR DEEPEMED & SIDES RAISED TO STORE AN ADDITIONAL 11.0 ACRE FEET OF WATER FOR THE ADDITIONAL CRANBERRY BOGS.

PUMP "C" LOCATED 1995' SOUTH & 260' WEST FROM 1/4 CORNER 32
25 hp. MOTOR WITH CENTRIFUGAL PUMP - CAPACITY: 550 GAL./MIN.

DRILLED WELL "B"
1 hp. MOTOR WITH SUBMERSABLE PUMP - CAPACITY: 80 GAL./MIN. INSIDE A METAL LINED 8" DIA. 35' DEEP HOLE.
LOCATED 2125' SOUTH & 260' WEST FROM 1/4 COR. 32
PRIMARY GROUND WATER RIGHT TO FILL RESERVOIR "B"

PUMP "B"
LOCATED 2105' SOUTH & 695' WEST FROM 1/4 COR. 32
25 hp. MOTOR WITH CENTRIFUGAL PUMP CAPACITY: 550 GAL./MIN.

RESERVOIR "B"
0.68 ACRES - AVERAGE 8.5 FOOT DEEP
TO STORE AT LEAST 5.2 ACRE FEET OF WATER

REGISTERED PROFESSIONAL LAND SURVEYOR

Louis Prahar

OREGON
NOV. 6, 1953
LOUIS B. PRAHAR
308

SEPTEMBER 3, 1982

EXISTING WATER RIGHTS:
APPLICATION No. 4581 AND No. R45820 - RECEIVED AND STATE ENGINEER'S OFFICE ON FEB. 28, 1969

SCALE: 1 INCH = 400 FT.

RECEIVED

WATER RESOURCES DEPT. SALEM, OREGON

RECEIVED

WATER RESOURCES DEPT. SALEM, OREGON

RECEIVED

WATER RESOURCES DEPT. SALEM, OREGON

RECEIVED

WATER RESOURCES DEPT. SALEM, OREGON