

SECTION 30 T.37S. R.5W. W.M.  
JOSEPHINE COUNTY

37 5 30

1" = 400'

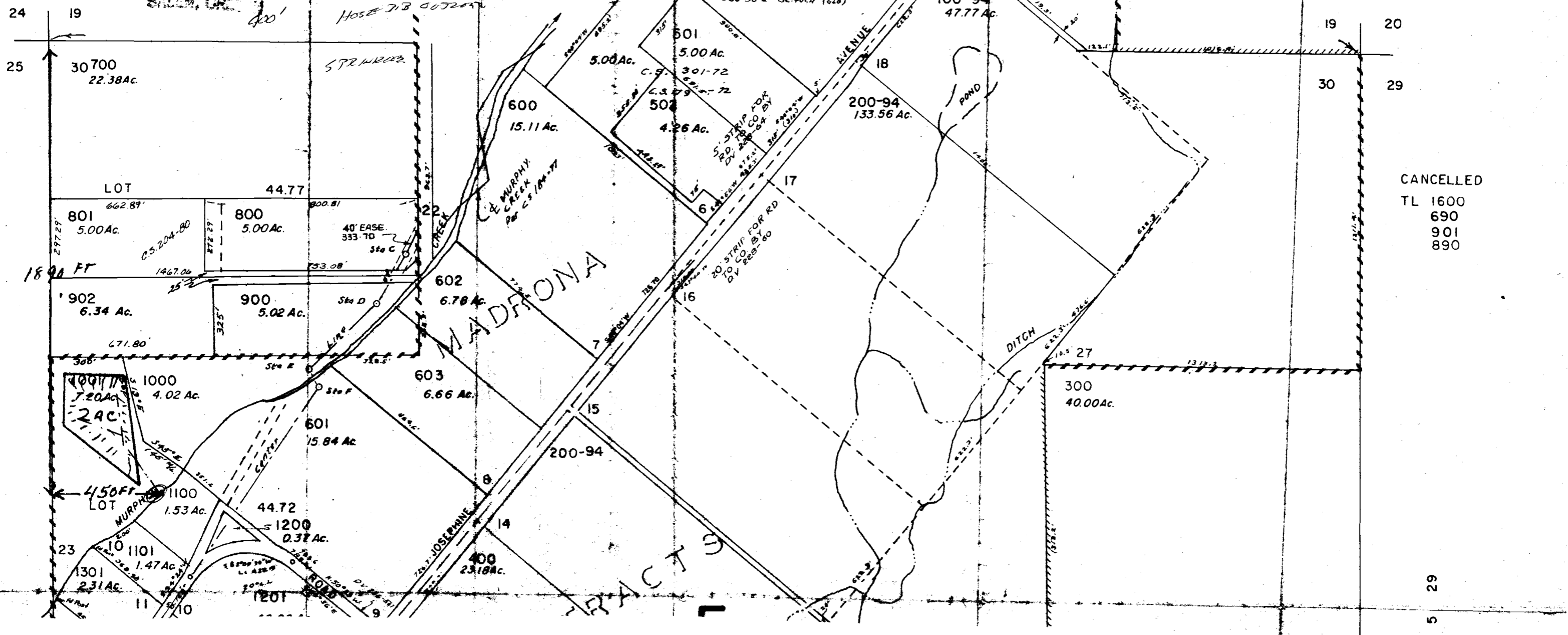
Application No. 67344  
Permit No. 48189

15 1993  
WATER RESOURCES DEPT.  
OREGON

RECEIVED  
OCT 5 1993  
WATER RESOURCES DEPT.  
SALEM, ORE.

SEE MAP 37 5 19  
PUMP: FROM  
MAIN LINE 1" FIRE  
HOSE 7/8 OUTLET

SEE MAP 37 5 19D



CANCELLED  
TL 1600  
690  
901  
890

5 29