

T. 31 S. R. 15 W. W. M.
 CURRY COUNTY
 1" = 2000'

Cancelled No's
 4101 1801
 4102 1701
 5305 1300
 5306 1400
 1401 1500
 1402 1301
 1403 1603

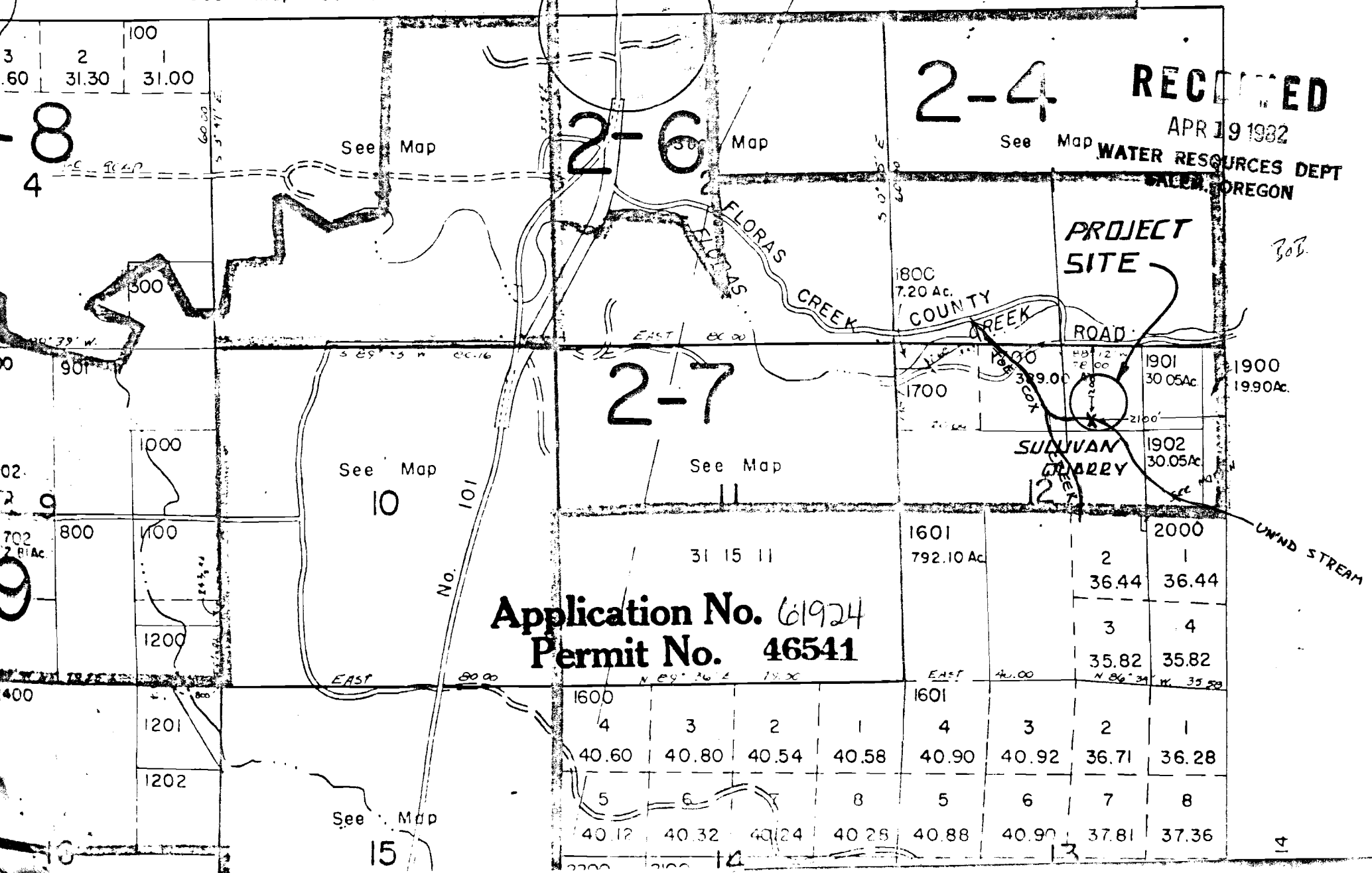
RECEIVED

JUL 20 1981

31 15
 & INDEX

WATER RESOURCES DEPT
 SALEM, OREGON

See Map 30 15



2-4

RECEIVED

APR 19 1982

WATER RESOURCES DEPT
 SALEM, OREGON

PROJECT
 SITE

Bob

2-7

Application No. 61924
 Permit No. 46541

31 15 11				1601 792.10 Ac	2000			
					2	1		
					36.44	36.44		
					3	4		
					35.82	35.82		
EAST 40.00				1601	EAST 40.00			
				4	3	2	1	
				40.60	40.80	40.54	40.58	40.90
				40.90	40.92	36.71	36.28	
				5	6	7	8	
				40.12	40.32	40.24	40.28	40.88
				40.88	40.90	37.81	37.36	

14