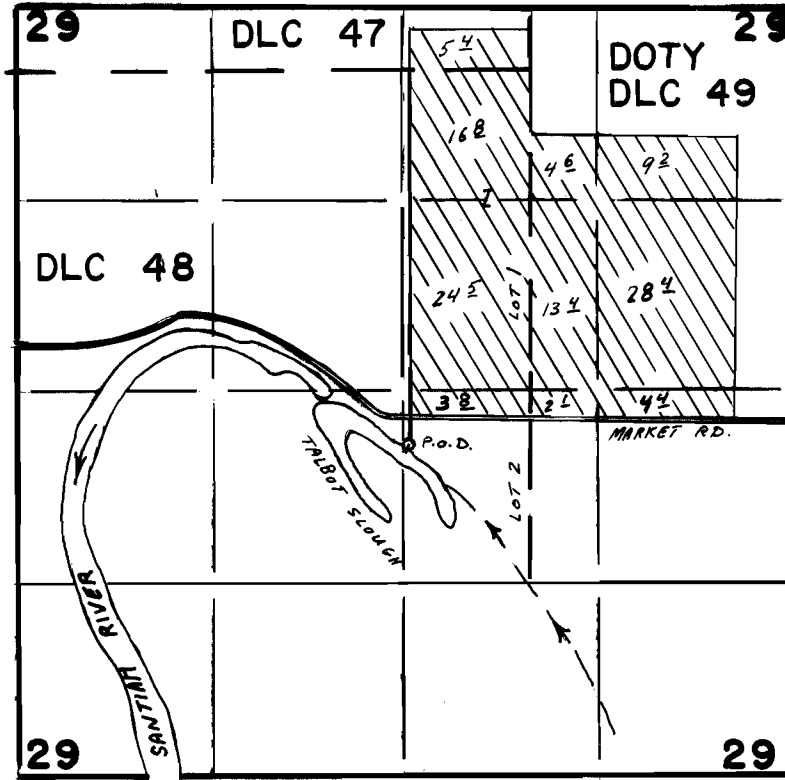


T. 9 S., R. 3 W., W. M.



DIV. POINT: 360' S. AND 40' E FROM CENTER CORNER SEC. 29

SCALE 1" = 1320'

FINAL PROOF SURVEY UNDER

Application No. 68372 Permit No. 49408
IN NAME OF

JB SOD & SEED CO.

Surveyed JUL 21 1988 by Z. SALEH

DFN-2P-102
1-11-89 Z.F.S.