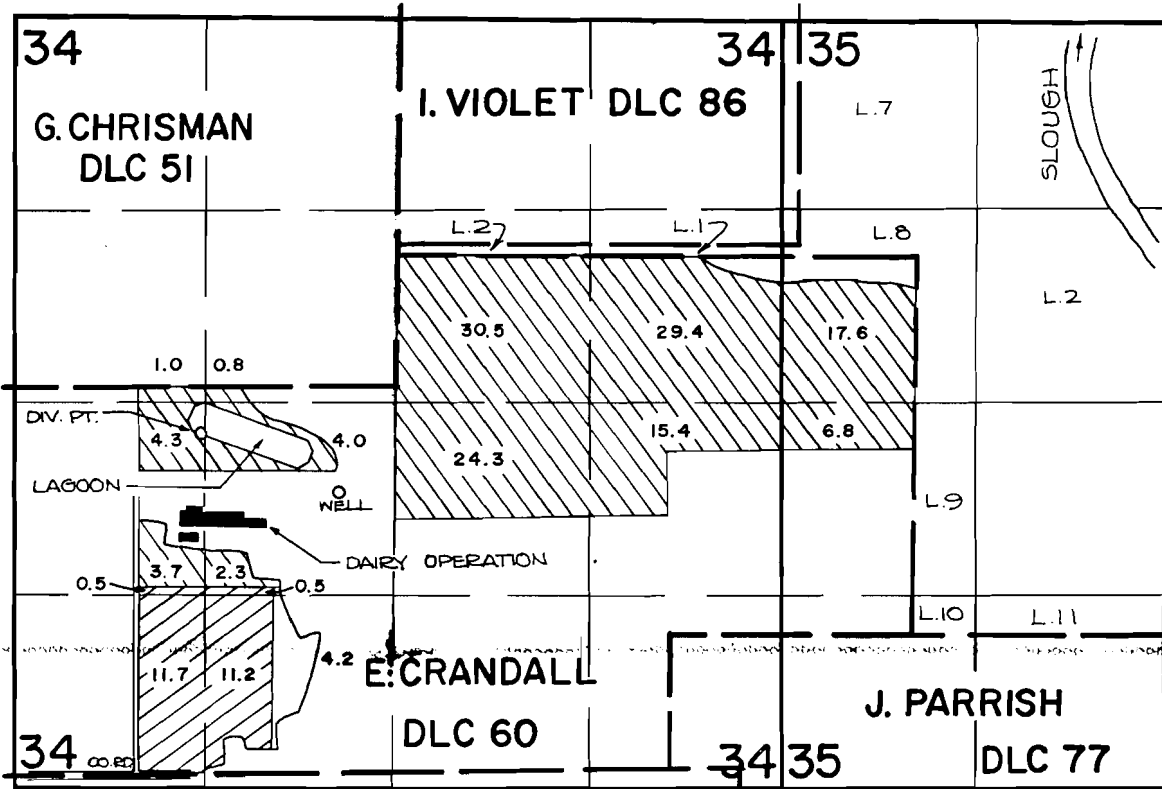
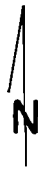


T. 4 S., R. 3 W., W.M.



THE WELL IS LOCATED 2025 FT. N. AND 2200 FT. E. FROM THE S.W. CORNER OF SECTION 34.
 THE DIV. PT. IS LOCATED 2450 FT. N. AND 1300 FT. E. FROM THE S.W. CORNER OF SECTION 34.

 PRIMARY
 SUPPLEMENTAL



FINAL PROOF SURVEY UNDER

SCALE: 4" = 1 MILE

55764 41510
 R-55763 R-6572
 Application No. G-8075. Permit No. G-7472.....
 IN NAME OF

.....SLEGERS FARMS, INC.....

Surveyed MAY 15, 1984, by P. Patten.....