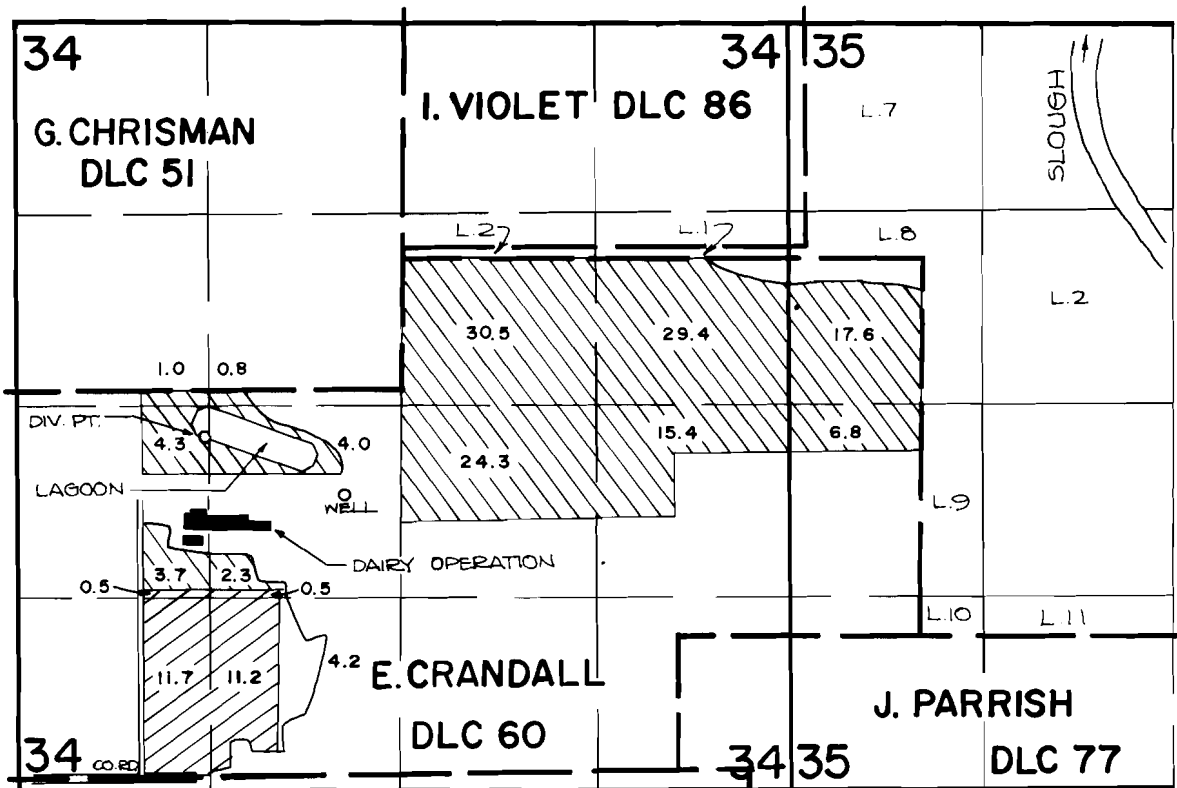
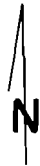


# T. 4 S., R. 3 W., W.M.



THE WELL IS LOCATED 2025 FT. N. AND 2280 FT. E. FROM THE S.W. CORNER OF SECTION 34.  
 THE DIV. PT. IS LOCATED 2450 FT. N. AND 1300 FT. E. FROM THE S.W. CORNER OF SECTION 34.

 PRIMARY  
 SUPPLEMENTAL



## FINAL PROOF SURVEY UNDER

SCALE: 4" = 1 MILE

55764                      41510  
 R-55763                  R-6572  
 Application No. G-8075    Permit No. G-7472  
 IN NAME OF

..... **SLEGERS FARMS, INC.** .....

Surveyed *MAY 15*, 1984, by *P. Page*.....