

SUNSET

4000 3200

2700

24

2600

3

24

3900 3300

22

25
3400

S.W. VISTA

26

3500

27 3600

16-15

600

400

300

16-15

SUNSET VALLEY
BROADLANE

800

900

1000

1100

Well #1

Rights

- 3.76 ac.; SE 1/4 NW 1/4 - 1.73 ac.)

Water Rights

- 1.40 ac.)

Well #2

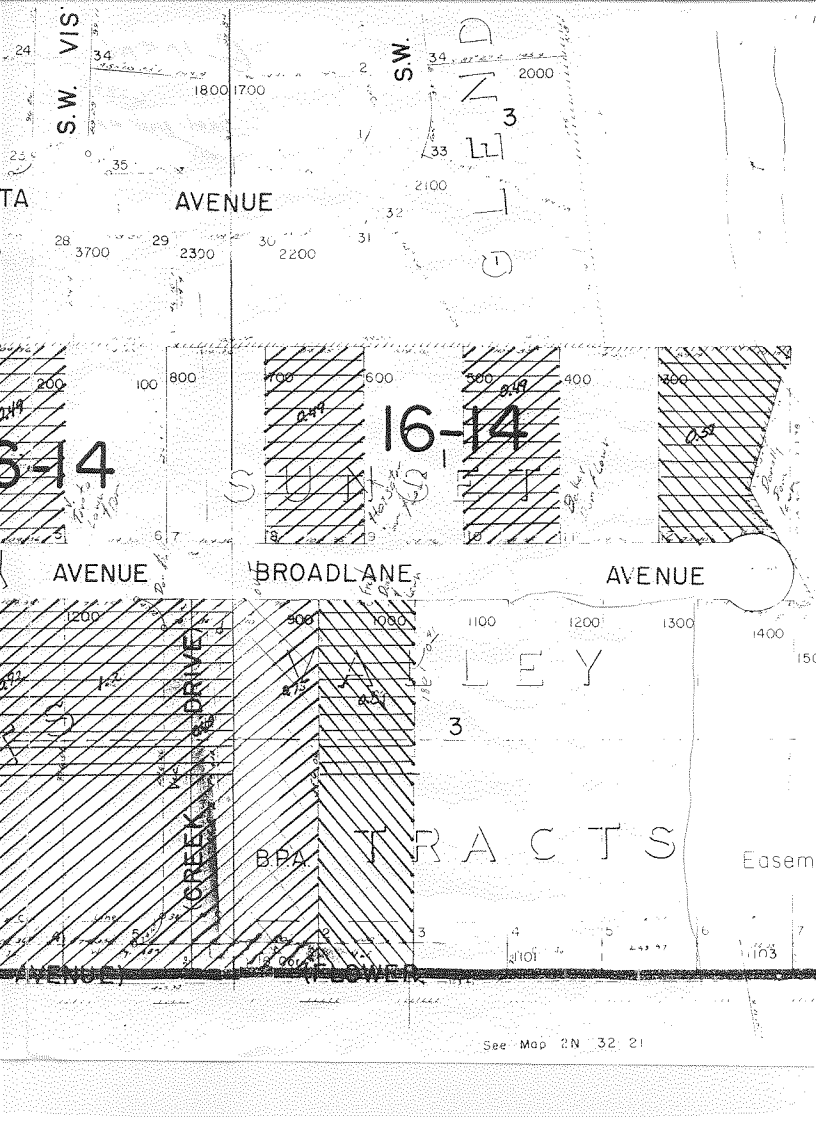
BPA

DRIVE

TRAILLEY

FLOWER

end cut



S.W. VIS

S.W.

TA AVENUE

28 3700 29 2300 30 2200 31

3-14

16-14

AVENUE

BROADLANE

AVENUE

CREEK DRIVE

LEY

BPA TRACTS

Easem

AVENUE) POWER