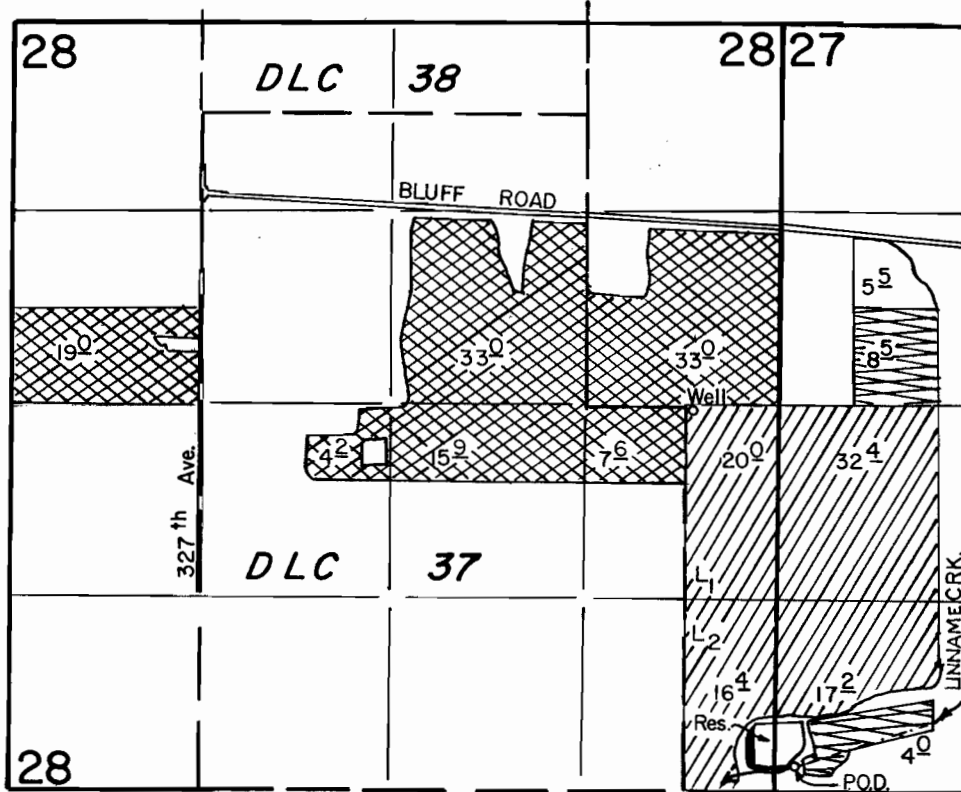


T. 1 S., R. 4 E., W.M.



Well Loc.: 2600' N. & 580' W.  
 P.O.D. Loc.: 180' N. & 140' E., both from SW Cor. Sec. 27

Scale: 1" = 1320'

**FINAL PROOF SURVEY**  
 UNDER

R-68846  
 68847  
 Application No. G-11529  
 IN NAME OF  
**J. FRANK SCHMIDT III**

R-10821  
 49928  
 Permit No. G-10623  
 Primary Supplement Containers

Supplement Containers  
 Primary Supplement Containers

Surveyed Dec. 15, 1989, by T. Warren

PTS w/FF +  
 41005-278-53A  
 4/13/90 TMW