

UNITED STATES  
DEPARTMENT OF THE INTERIOR  
BUREAU OF LAND MANAGEMENT

28691  
66735

SECTION

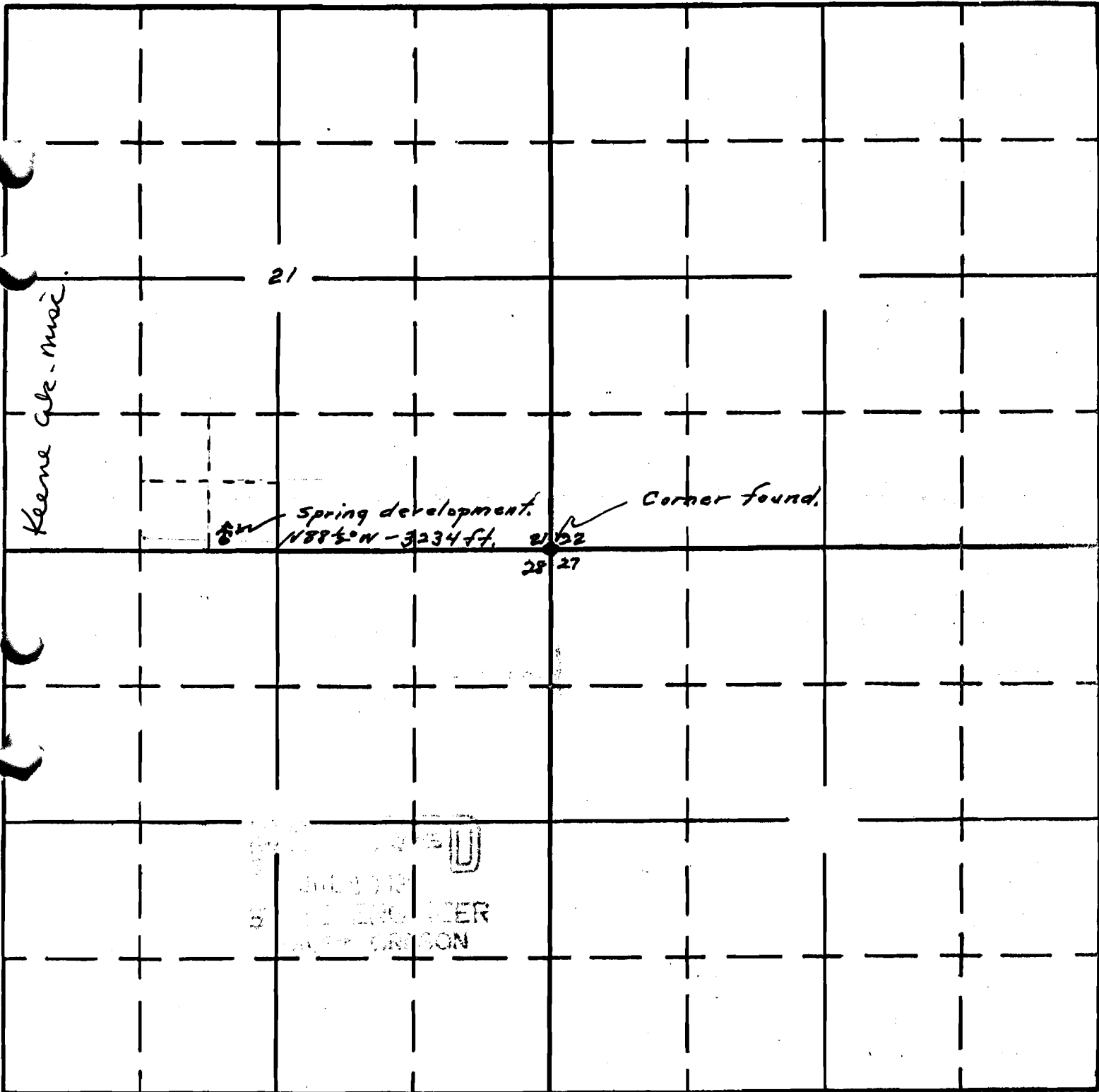
21

SE 1/4 SE 1/4 SW 1/4

# Oregon State Water Filings

TOWNSHIP 40S, RANGE 3E, W. M.

Mill Creek Spring  
North



Keene Cr. - Mai.

21

Spring development.  
N 88 1/2° W - 3234 ft.

Corner found.

28 27

5  
JUL 19 1970  
ENGINEER  
OREGON

South

APPLICATION No. 35223

PERMIT No. 28691