

I, F. H. Walker, of Ashland, Ore. do hereby certify that this map was made from notes taken by me on an actual survey made on Feb. 7-1923, and that it correctly represents the works described in accompanying application, together with the location of streams and other ditches in the immediate vicinity.

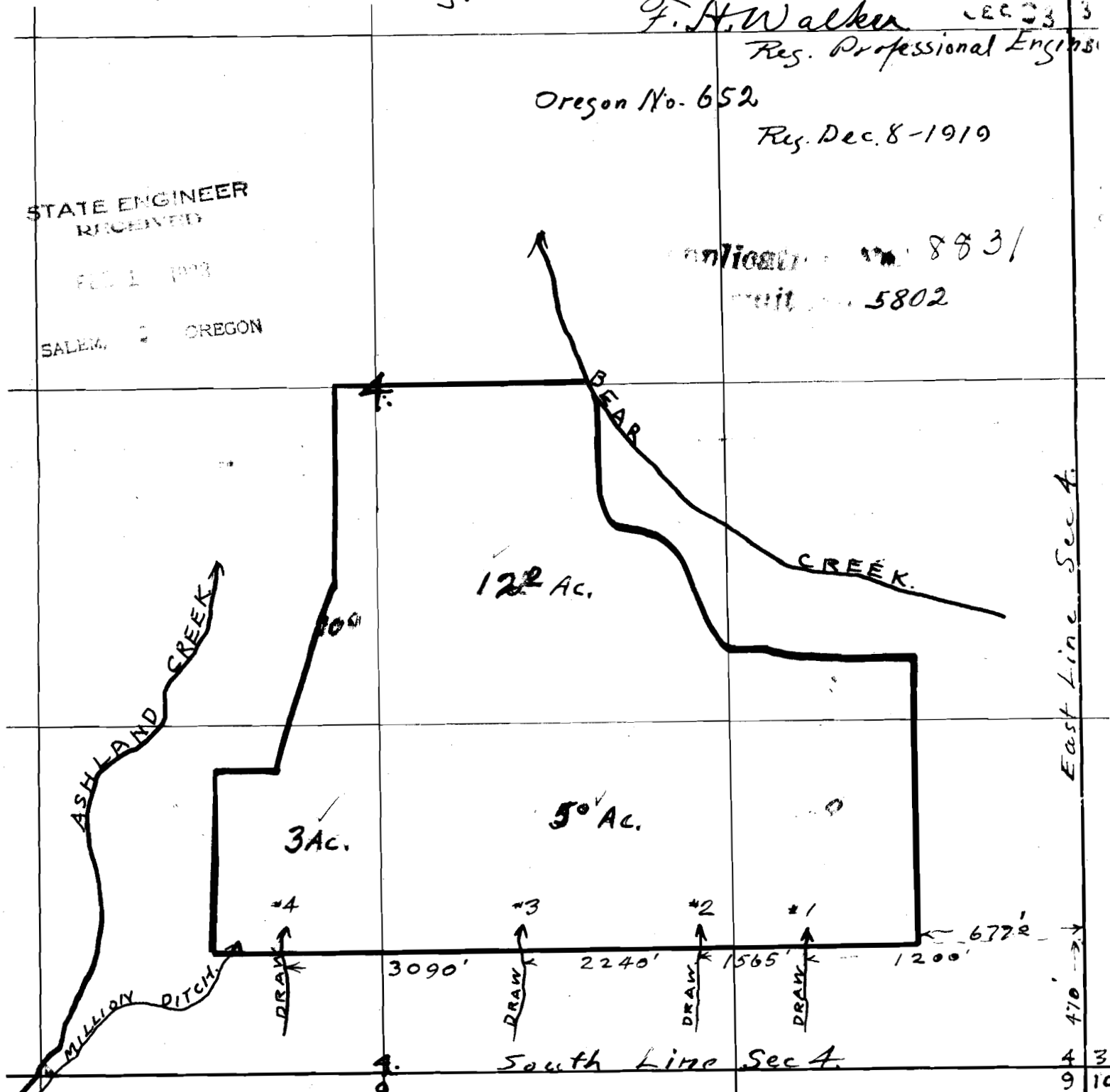
F. H. Walker Dec 23 1919  
 Reg. Professional Engineer

Oregon No. 652

Reg. Dec. 8-1919

STATE ENGINEER  
 RECEIVED  
 FEB 1 1923  
 SALEM, OREGON

Application No. 8831  
 Unit No. 5802



Tp 39 S. R. 1 E. W. M. O.