

AUG 19 1981

FIELD MAP SHEET

WATER RESOURCES DEPT

SALEM, OREGON

N.F.

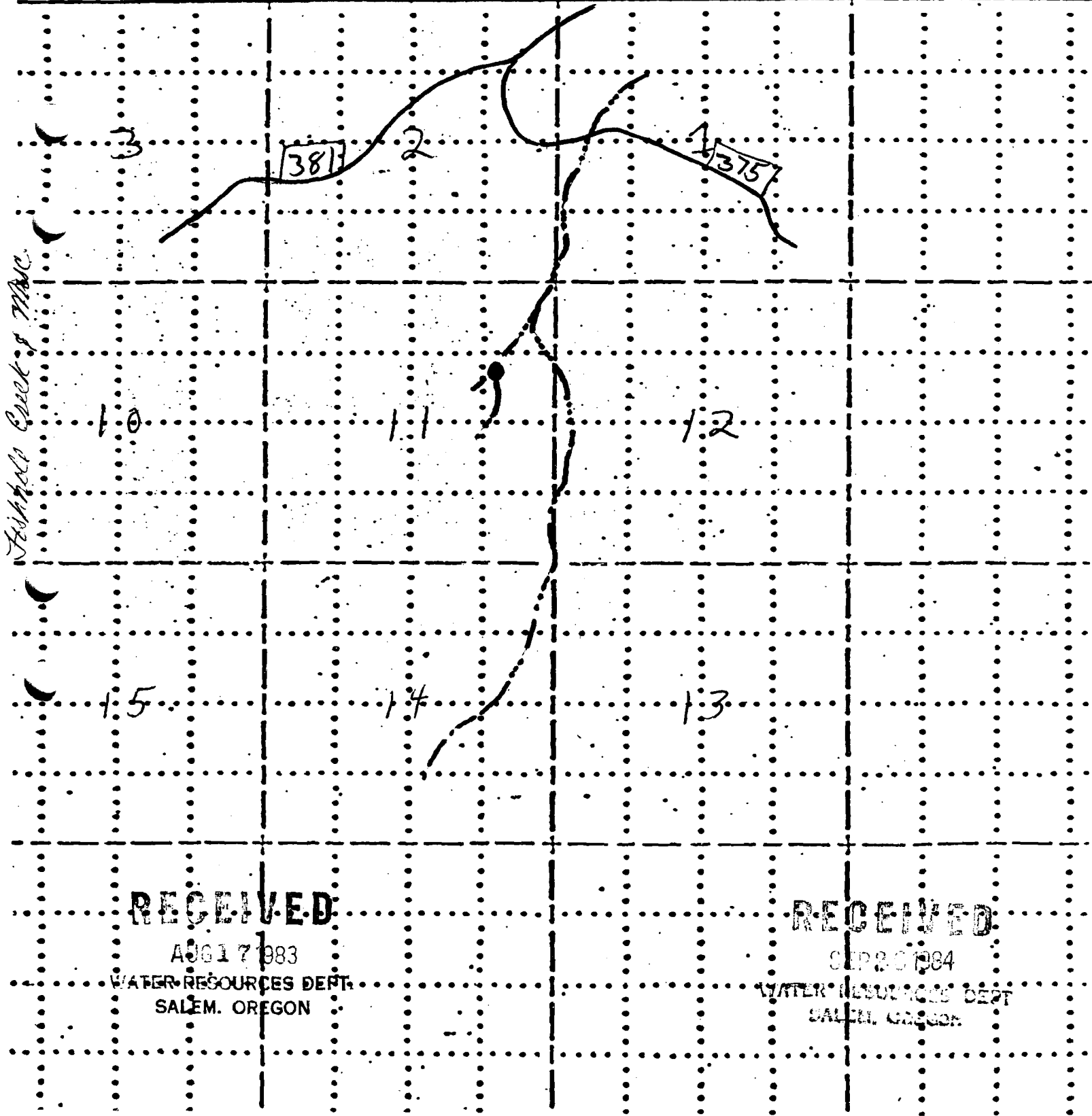
T. 38S R. 14E Sec. 11 Subdiv. SE 1/4 NE 1/4

Mapped by _____ Reviewed by _____ Scale 2 inches = 1 Mile

● RESERVOIR Application No. R62464 7/20, 1981

— DRAINAGE Permit No. R10530
— ROAD

Fishhawk Creek of MHC



RECEIVED

AUG 17 1983

WATER RESOURCES DEPT.
SALEM, OREGON

RECEIVED

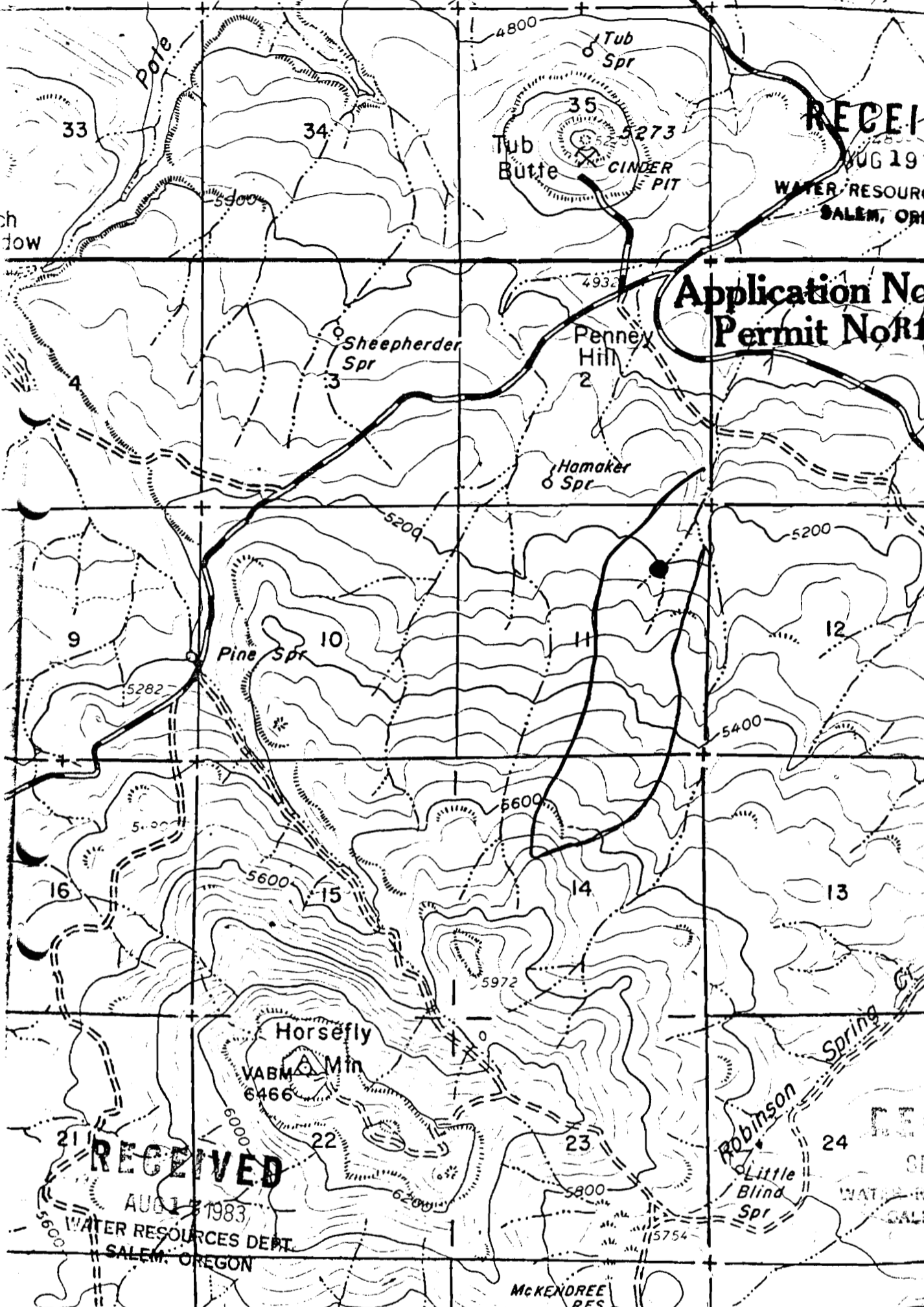
SEP 20 1984

WATER RESOURCES DEPT.
SALEM, OREGON

38 14 11

RECEIVED
AUG 19 1981
WATER RESOURCES DEPT
SALEM, OREGON

Application No. R-62464
Permit No. R10530



13 MI

T.38 S

RECEIVED
SEP 26 1984
WATER RESOURCES
SALEM, OREGON

42' 15"
121° 00'

R14 F

BARNES VALLEY

McKENDREE RES

RECEIVED
AUG 17 1983
WATER RESOURCES DEPT
SALEM, OREGON