

SECTION

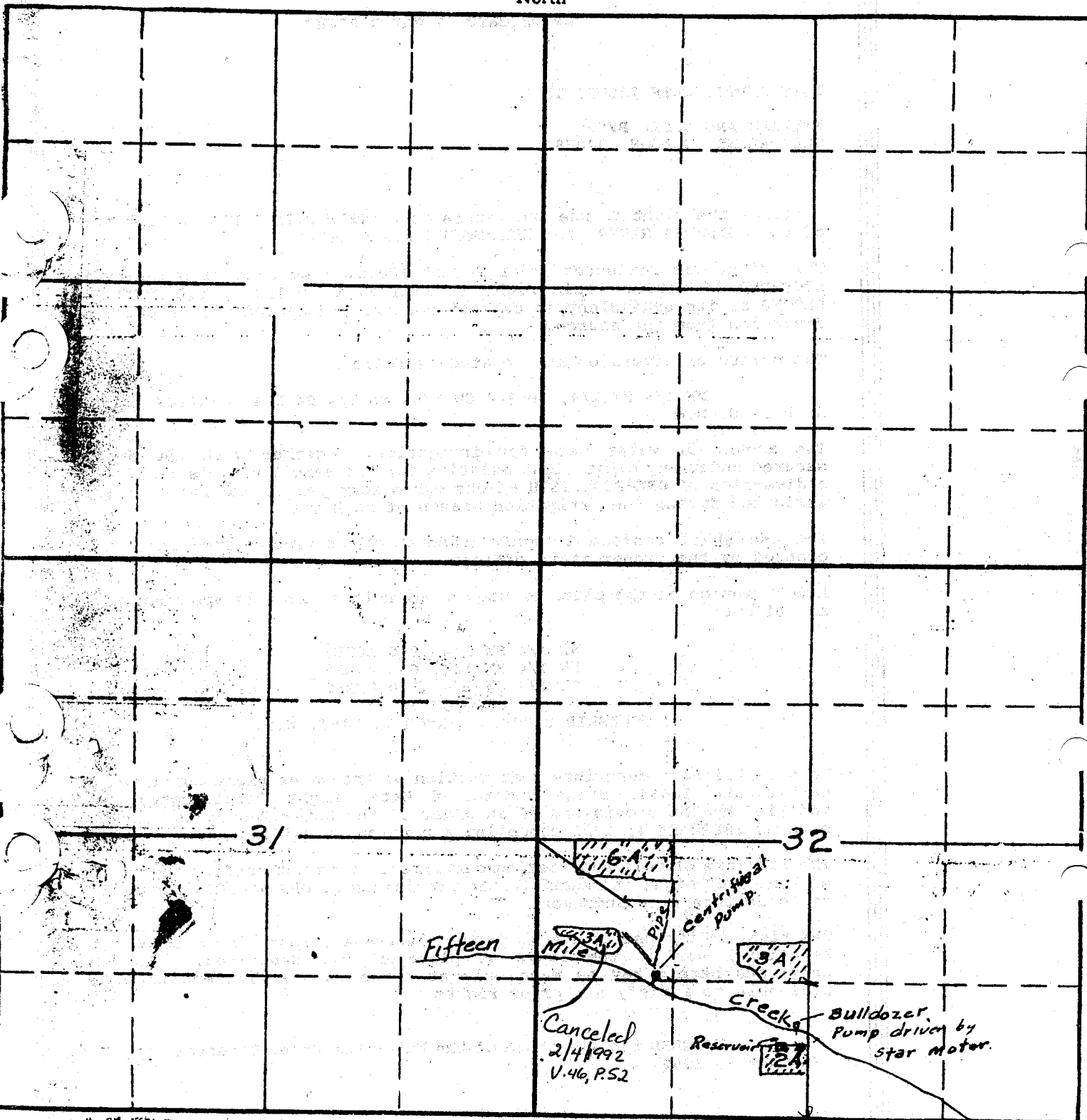
10000

~~28~~
32

2 N 14 E.
TOWNSHIP ~~15~~, RANGE ~~2~~, W. M.

North

East



31

32

Fifteen

Mile

Pipe
Centrifugal Pump

3A

Creek

Bulldozer Pump driven by star motor.

Cancelled
2/4/1992
V.46, P.52

2A
Reservoir

South

STATE ENGINEER

APPLICATION No. 13891

PERMIT No. 10000