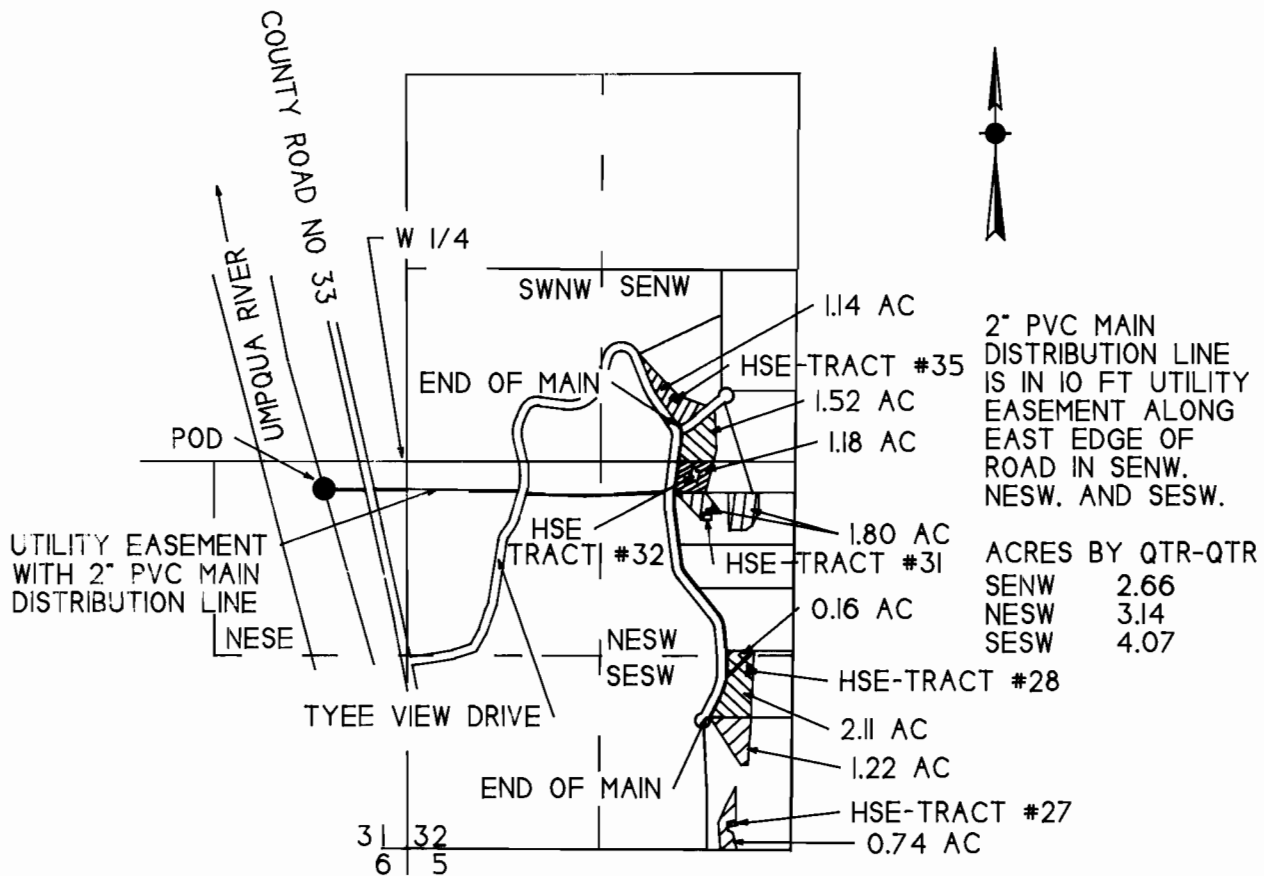


# T24S. R7W.WM

SCALE 1" = 1320'



POD IS 190 FT S AND 530 W FROM W 1/4 COR OF SECTION 32

## FINAL PROOF SURVEY

UNDER

Application No. 69233 Permit No. 50134

IN NAME OF

HILL TOP WATER CORPORATION

Surveyed July 9, 1991 by M E Farr



7-91