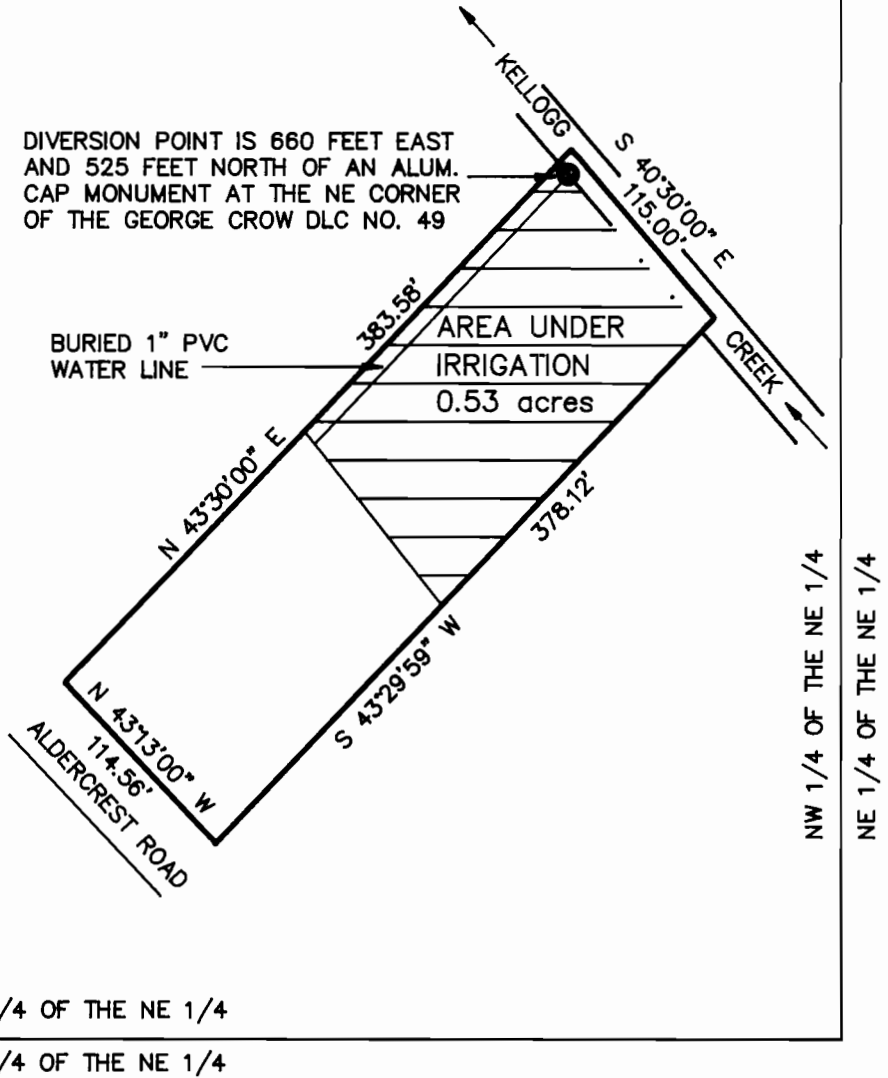


SECTION 1, T2S, R1E, W.M.
NW 1/4 OF THE NE 1/4

DIVERSION POINT IS 660 FEET EAST
AND 525 FEET NORTH OF AN ALUM.
CAP MONUMENT AT THE NE CORNER
OF THE GEORGE CROW DLC NO. 49

BURIED 1" PVC
WATER LINE

AREA UNDER
IRRIGATION
0.53 acres



NW 1/4 OF THE NE 1/4
NE 1/4 OF THE NE 1/4

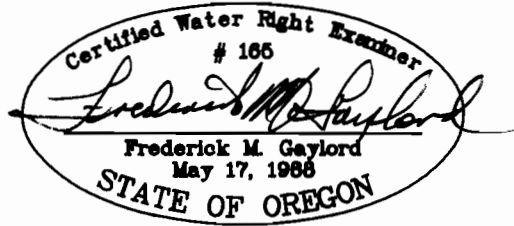
NW 1/4 OF THE NE 1/4
SW 1/4 OF THE NE 1/4

SCALE
1" = 100'

PLAT

FINAL PROOF SURVEY
UNDER

APPLICATION NO. 70045 PERMIT NO. 50838
IN NAME OF C. NICHOLS INSLEY
SURVEYED JANUARY 14, 1991 BY



*Note -
this is w/in
Kellogg DLC 47*