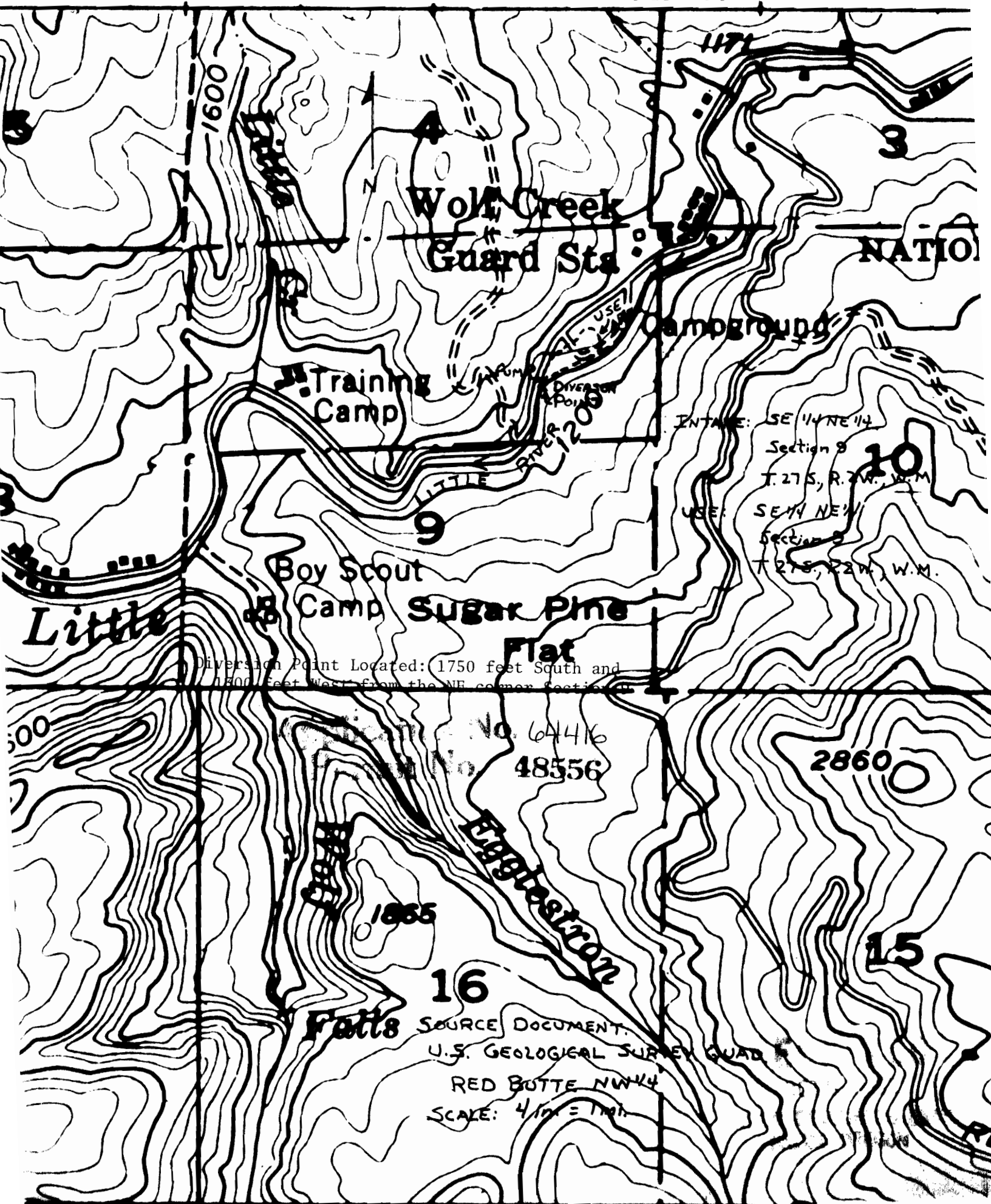


R. 2 W.



Wolf Creek
Guard Sta

Campground

Training
Camp

Boy Scout
Camp

Sugar Pine
Flat

Little

NATION

INTAKE: SE 1/4 NE 1/4
Section 9
T. 27 S., R. 2 W., W.M.
USE: SE 1/4 NE 1/4
Section 9
T. 27 S., R. 2 W., W.M.

Diversion Point Located: 1750 feet South and
1800 feet West from the NE corner section 9

No. 64416
48556

2860

16

Falls

SOURCE DOCUMENT:
U.S. GEOLOGICAL SURVEY QUAD #
RED BUTTE NW 1/4
SCALE: 4" = 1 MI.

15

1865

Englestrom

500

1609

1171