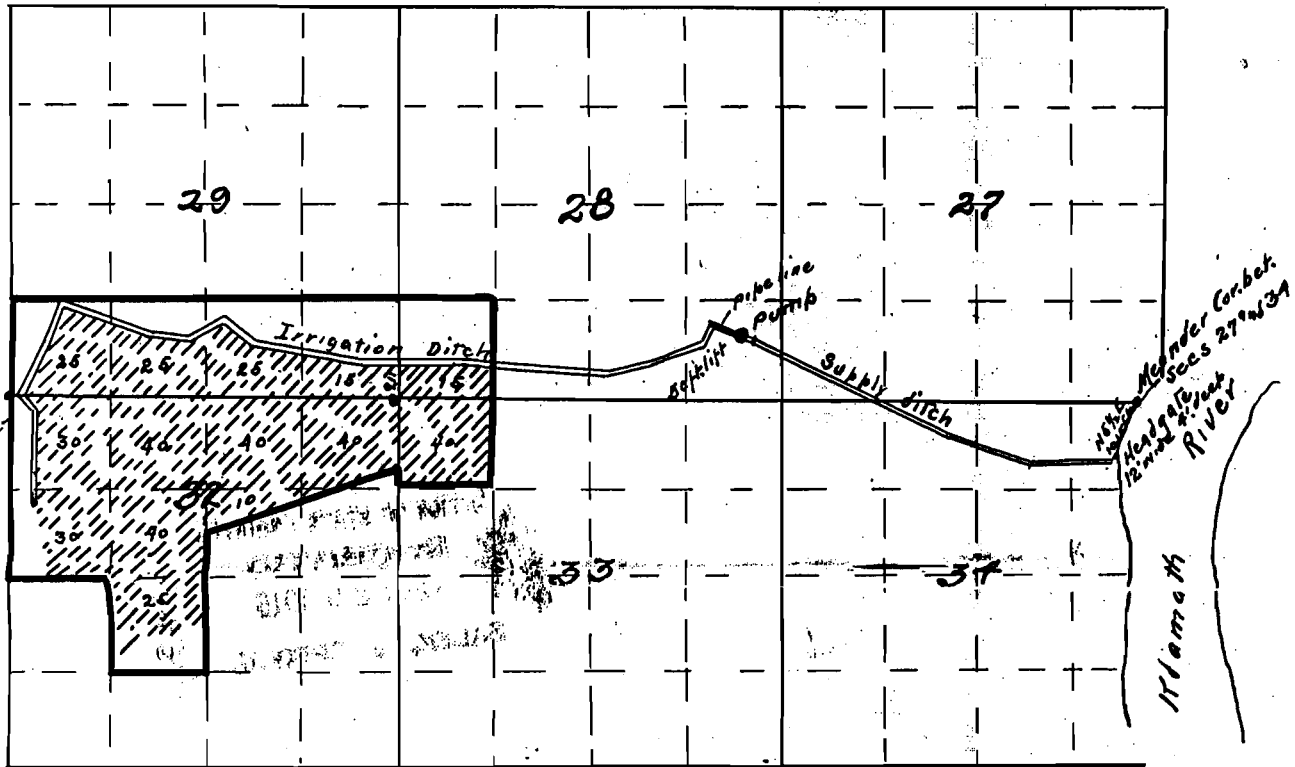


Map of Emmitt Ditch

T39S R8E.



I, E.B. Henry, of Klamath Falls, Oregon, do hereby certify that this map was made from notes taken during an actual survey made under my immediate supervision on the 15th day of December 1915 and that it correctly represents the works described in the accompanying application together with the location of streams and other ditches in the immediate vicinity, and has written thereon the area in each smallest legal subdivision which it is proposed to irrigate.

E B Henry
Surveyor.