

Application No. 68819
Permit No. 49860

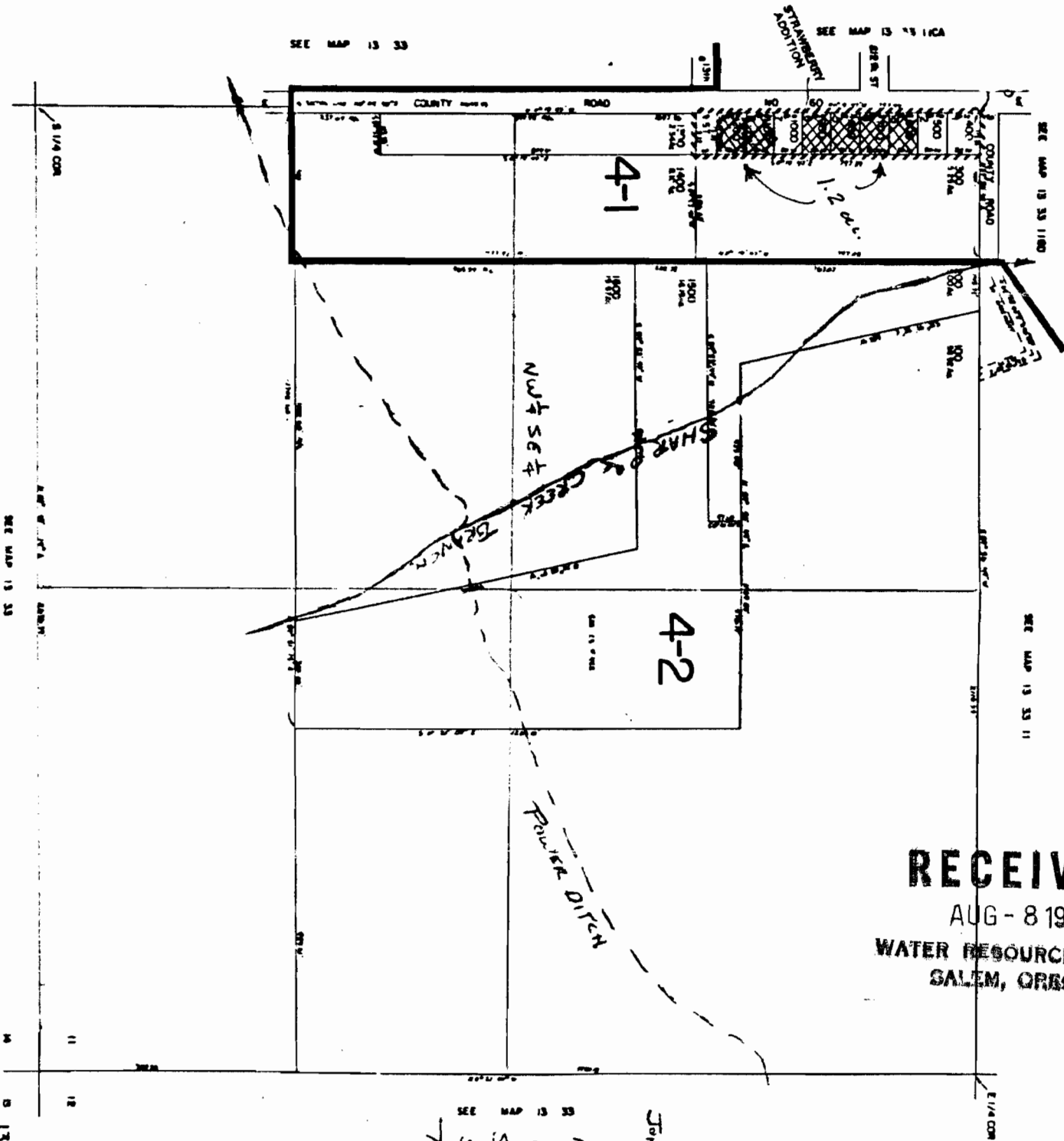
SE 1/4 SEC. 11 T.13S. R.33E. W.M.
GRANT COUNTY

13 33 11D
PRAIRIE CITY

RECEIVED

AUG - 8 1986

WATER RESOURCES DEPT
SALEM, OREGON



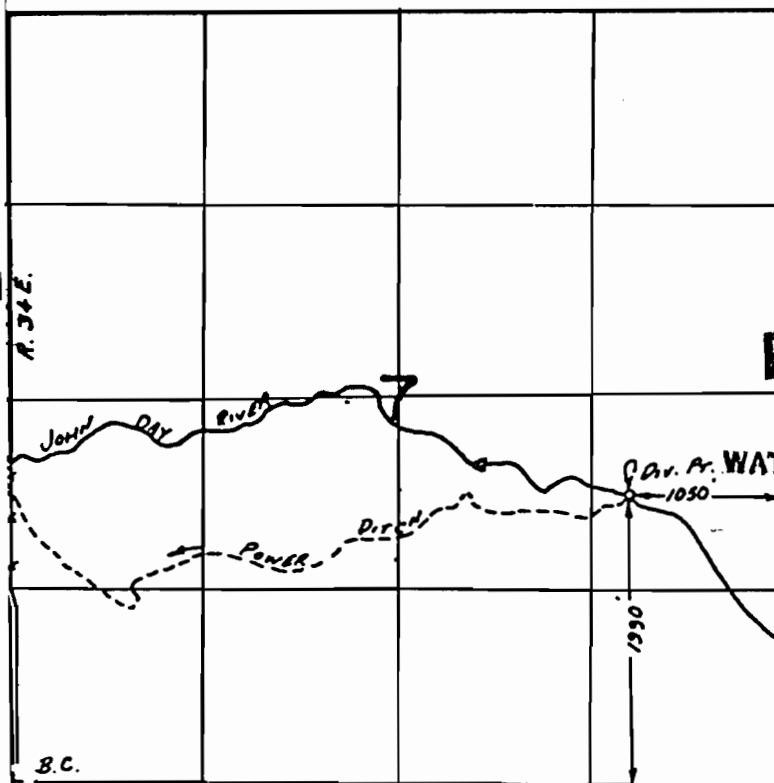
1" = 400'
N
JOHN DAY RIVER
DIVERSION
1990' N +
1050' W FROM
SE CORNER OF
SECTION 7
T13S R34E

SEE MAP 13 33
SEE MAP 13 33 11D
SEE MAP 13 33 11
SEE MAP 13 33 11D

Application No. 68819
Permit No. 49860

POWER DITCH DIVERSION FROM
JOHN DAY RIVER

TOWNSHIP 13S., RANGE 34E., W.M.



RECEIVED

AUG - 8 1986

WATER RESOURCES DEPT
SALEM, OREGON