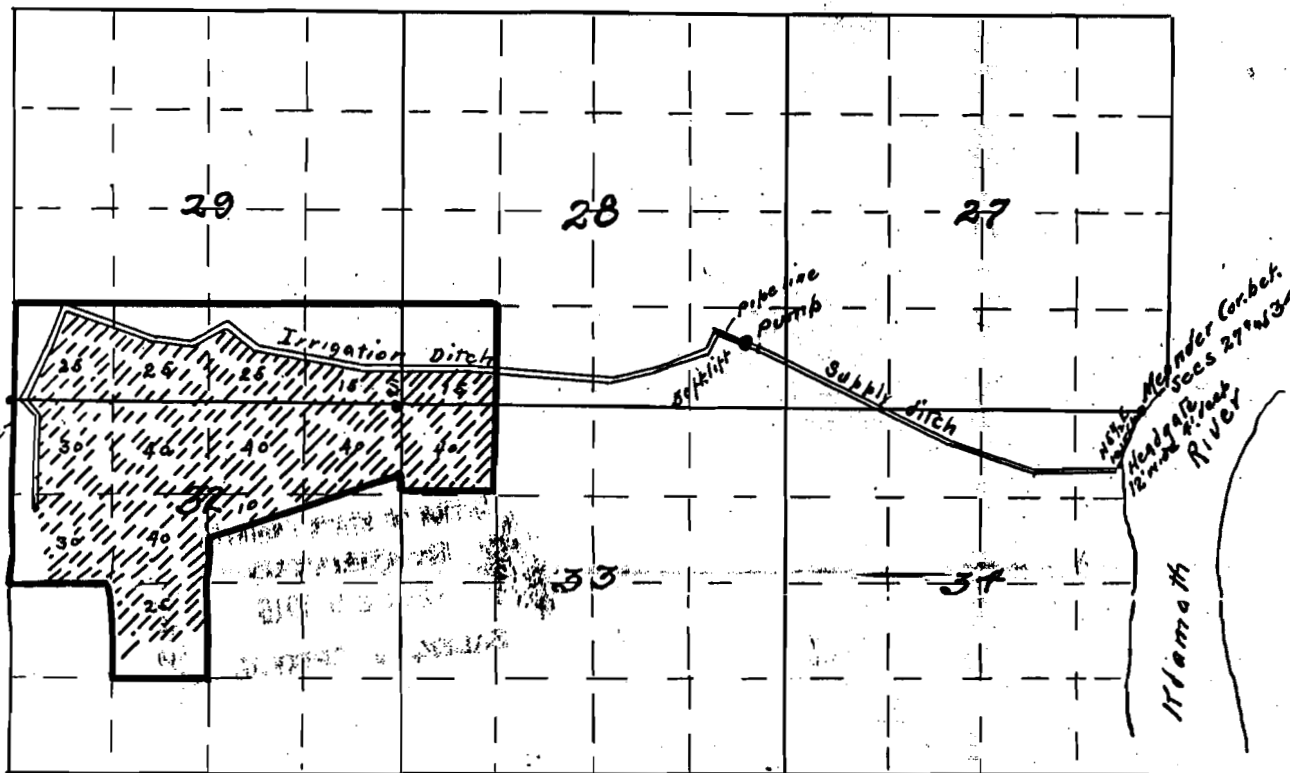


# Map of Emmitt Ditch

T39S R8E.



2969  
2074  
1675  
1676  
1677  
1678  
1679

I, E. B. Henry, of Klamath Falls, Oregon, do hereby certify that this map was made from notes taken during an actual survey made under my immediate supervision on the 15<sup>th</sup> day of December 1915 and that it correctly represents the works described in the accompanying application together with the location of streams and other ditches in the immediate vicinity, and has written thereon the area in each smallest legal subdivision which it is proposed to irrigate.

E. B. Henry  
Surveyor.