

# SURVEY FOR GORDON DOKE, et. ux.

RECEIVED

MAY 25 1983

A PORTION OF SECT. 6 T33 R.14W.W.M.  
CURRY COUNTY, ORE.  
SCALE: 1 INCH=100 FEET

WATER RESOURCES DEPT.  
SALEM, OREGON

RECEIVED

JUN 21 1983

WATER RESOURCES DEPT.  
SALEM, OREGON

RECEIVED

FEB 25 1986

WATER RESOURCES DEPT.  
SALEM, OREGON

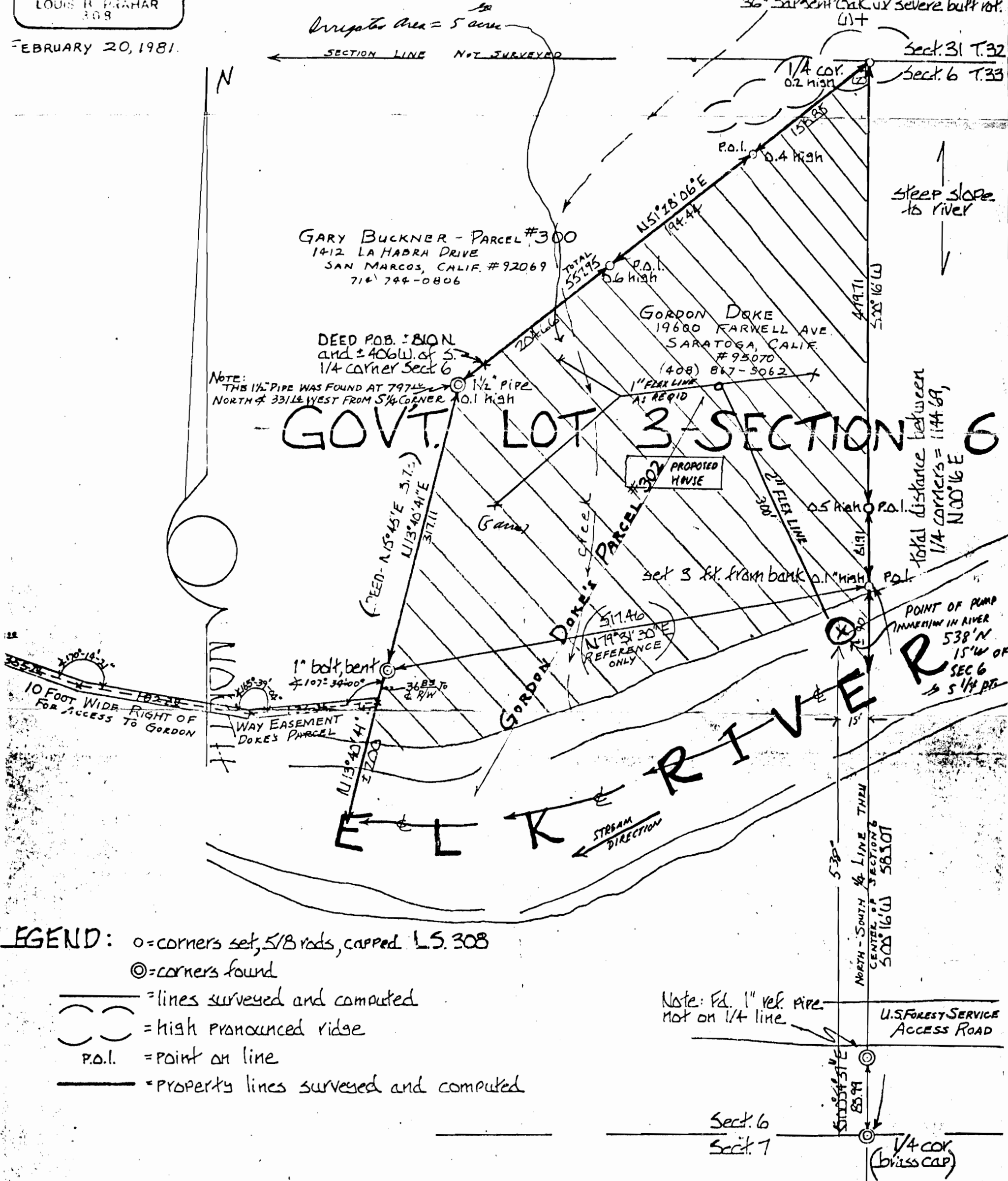
Application No. 65153  
Permit No. 47832

Ed. original B.T.'s as noted in 1898 survey: (1) N9°W 44.22 ft. of 1/4 cor. Sargent Oak, now 24" w/ butt rot, and (2) S80°W 60 ft. of 1/4 cor. a 36" Sargent Oak w/ severe butt rot.

REGISTERED PROFESSIONAL LAND SURVEYOR

*Louis R. Prahar*  
OREGON  
NOV 11 1951  
LOUIS R. PRAHAR  
308

FEBRUARY 20, 1981.



- LEGEND:**
- = corners set, 5/8 rods, capped L.S. 308
  - ⊙ = corners found
  - = lines surveyed and computed
  - ⊖ = high pronounced ridge
  - p.o.l. = point on line
  - = property lines surveyed and computed

Note: Ed. 1" ref. pipe not on 1/4 line  
U.S. FOREST SERVICE ACCESS ROAD