

SURVEY FOR GORDON DOKE, et. ux.

A PORTION OF SECT. 6 T33 R.14W.W.M.
CURRY COUNTY, ORE.
SCALE: 1 INCH=100 FEET

RECEIVED

MAY 25 1983

WATER RESOURCES DEPT.
SALEM, OREGON

RECEIVED

JUN 21 1983

WATER RESOURCES DEP.
SALEM, OREGON

REGISTERED
PROFESSIONAL
LAND SURVEYOR

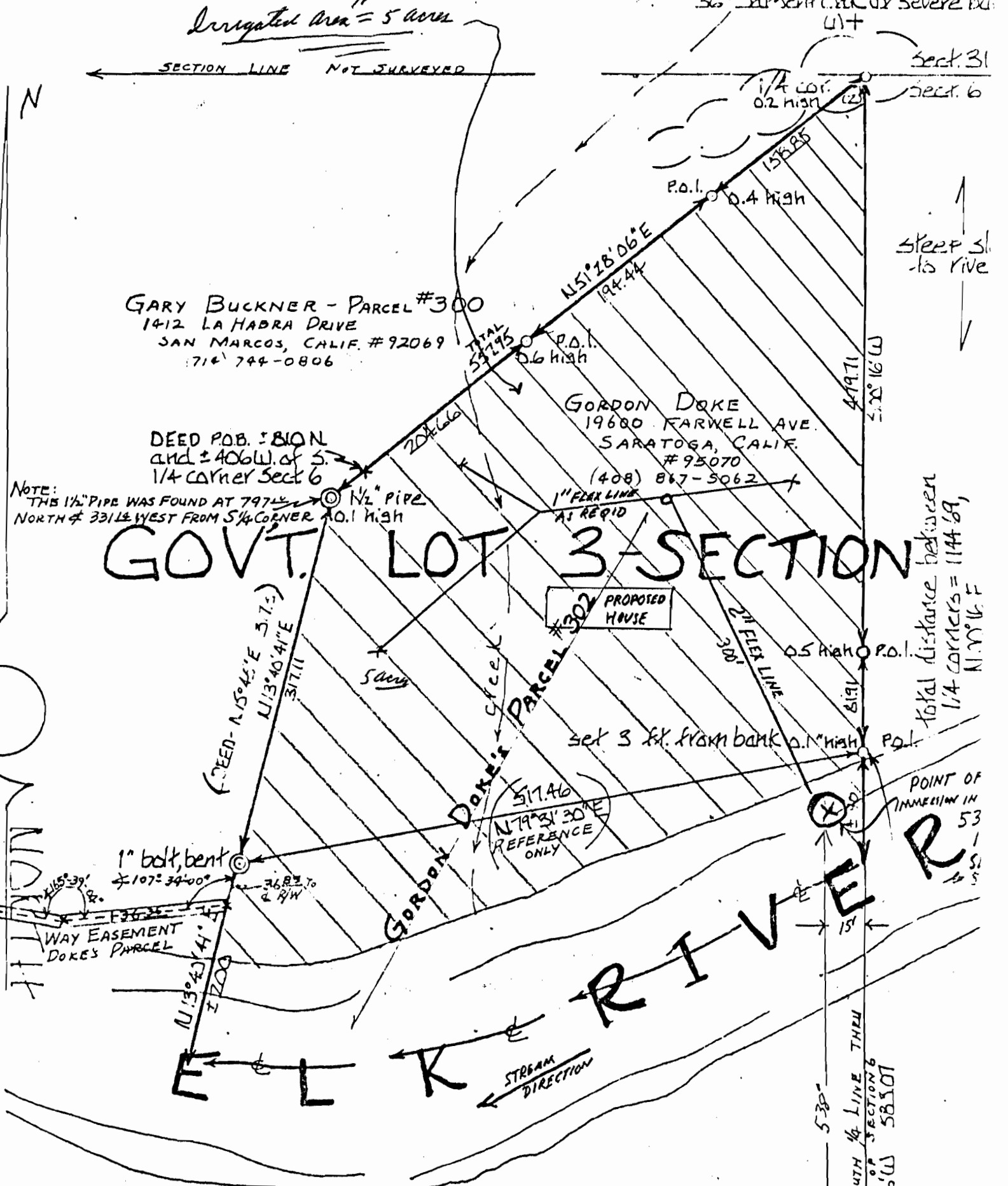
OREGON
NOV 13 1951
LOUIS B. HANNAH
308

Application No. 65153
Permit No. 47832

Irrigated Area = 5 acres

Fd. original B.T.'s as noted in 12 surveys: (1) N9°W 44.22 ft. of 1/4 Sargent Cal. now 24" w/ buff and (2) S80°E 66 ft. of 1/4 cor. 36" Sargent Cal. w/ severe bu. (1) +

FEBRUARY 20, 1981.



LEGEND: o = corners set, 5/8 rods, capped LS. 308

⊙ = corners found

— = lines surveyed and computed

⊂ = high pronounced ridge

P.O.L. = point on line

— = property lines surveyed and computed

Note: Fd. 1" ref. pipe not on 1/4 line

U.S. Forests Access

SECT. 6

SECT. 7

1/4 COR. (brass cap)