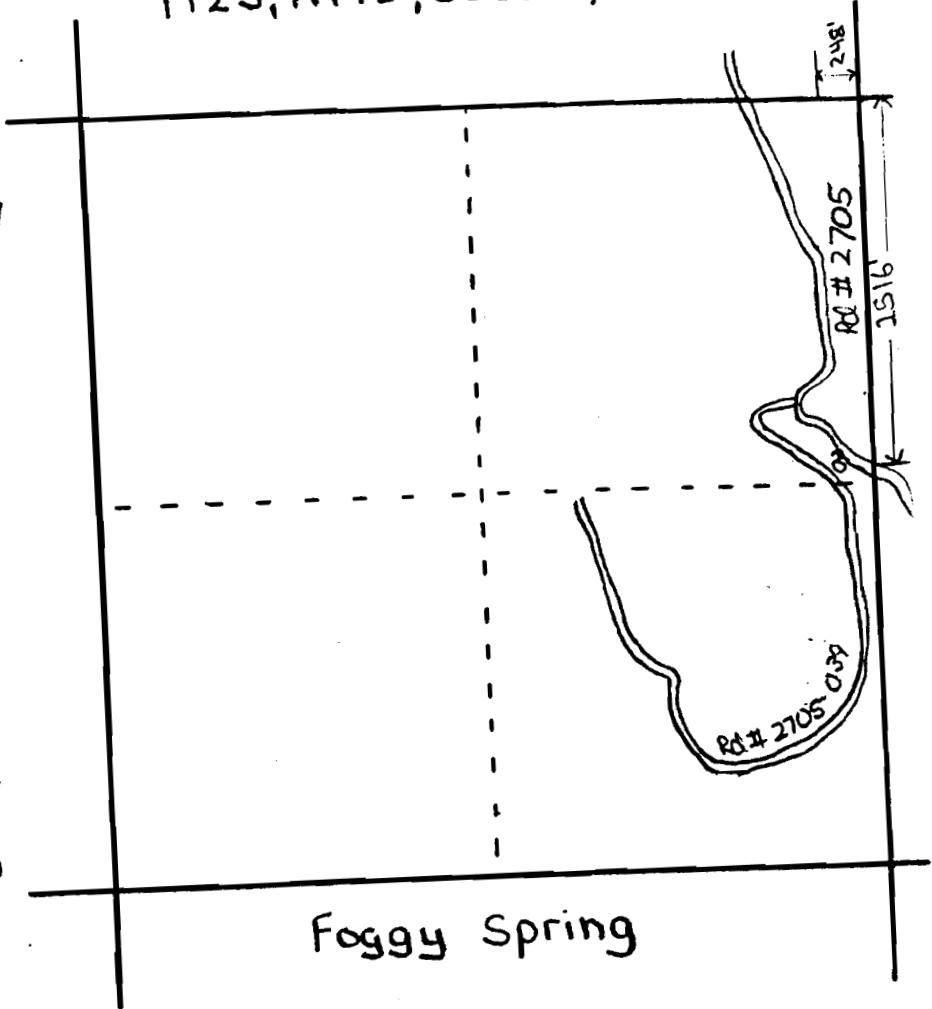


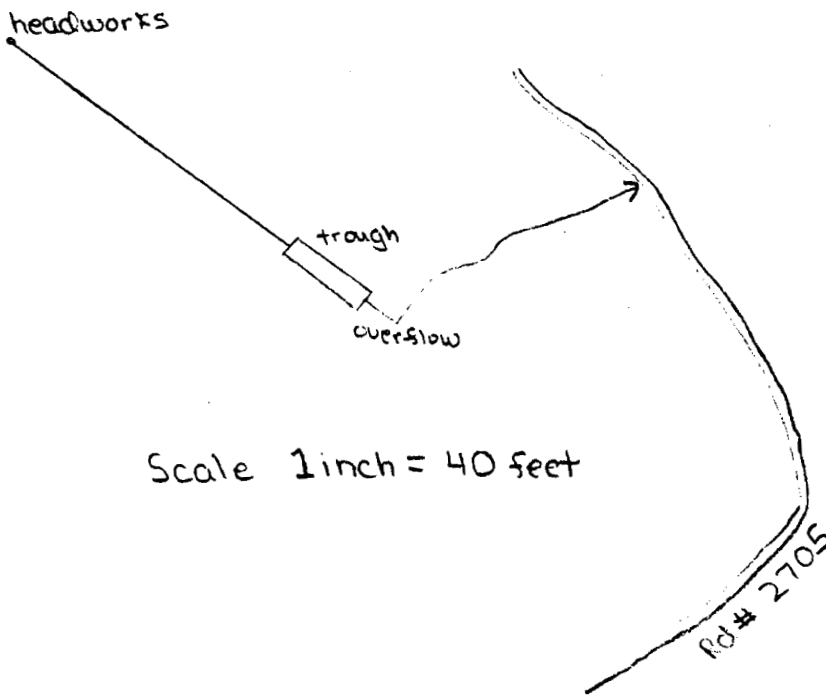
T12S, R17E, Sec 29, SE 1/4 NE 1/4

SCALE  
4" = 1 mile



Application No. 66344  
Permit No. 49529

Foggy Spring



Scale 1 inch = 40 feet

RECEIVED

SEP 19 1983  
WATER RESOURCES DEPT.  
SALEM, OREGON

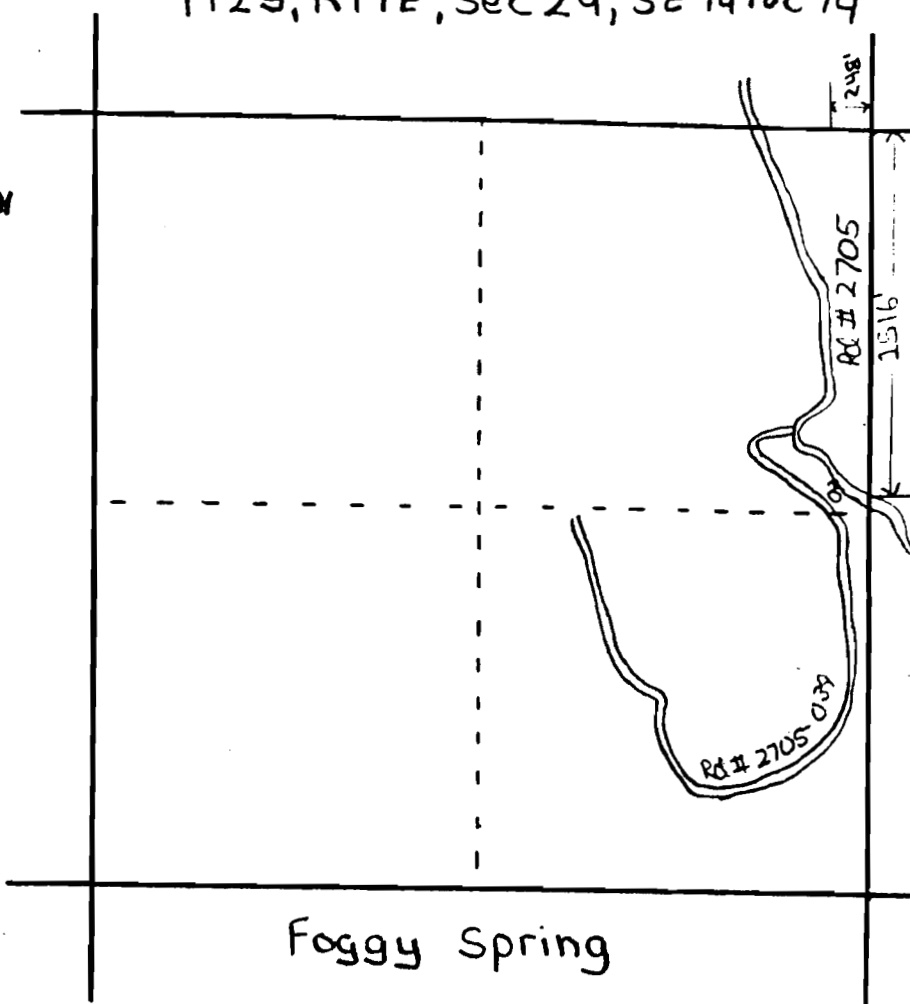
# 1 of 2  
Cert. # 68186

49529

RECEIVED MAR 18 1993

T12S, R17E, Sec 29, SE1/4 NE1/4

SCALE  
4" = 1 mile



Application No. 66344  
Permit No. 49529

Foggy Spring

headworks

trough

overflow

Scale 1 inch = 40 feet

Rd # 2705

SEP 29 1983  
WATER RESOURCES DEPT.  
SALEM, OREGON

#2 of 2  
49529