

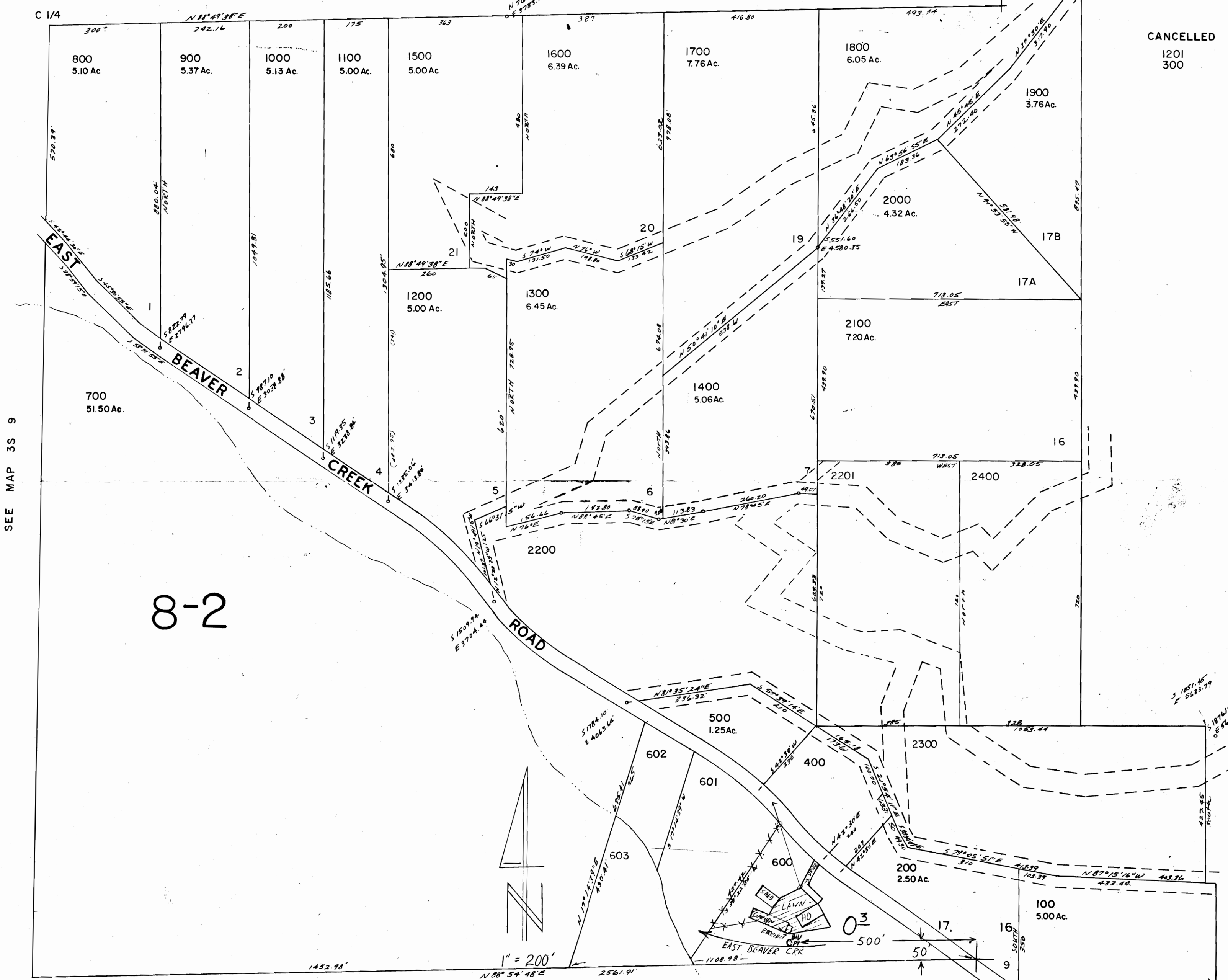
SE 1/4 SEC. 17 T. 3 S. R. 9 W. WM.
TILLAMOOK COUNTY

3S 9 17D

This map was prepared for
assessment purpose only.

1" = 200'

SEE MAP 3S 9



SEE MAP 3S 9

SEE MAP 3S 9

8-2

FINAL PROOF SURVEY

UNDER

Application No. 68445. Permit No. 49445.7

IN NAME OF

SEE MAP 3S 9

Surveyed May 1, 1991, by R. W. KLASSEN

3S 9 17D