

Section 18 T0S R2E WM
MARION COUNTY

18 9 2E
& INDEX

FINAL PROOF SURVEY

1" = 400'

UNDER
Application No. 68999 Permit No. 50020

IN NAME OF

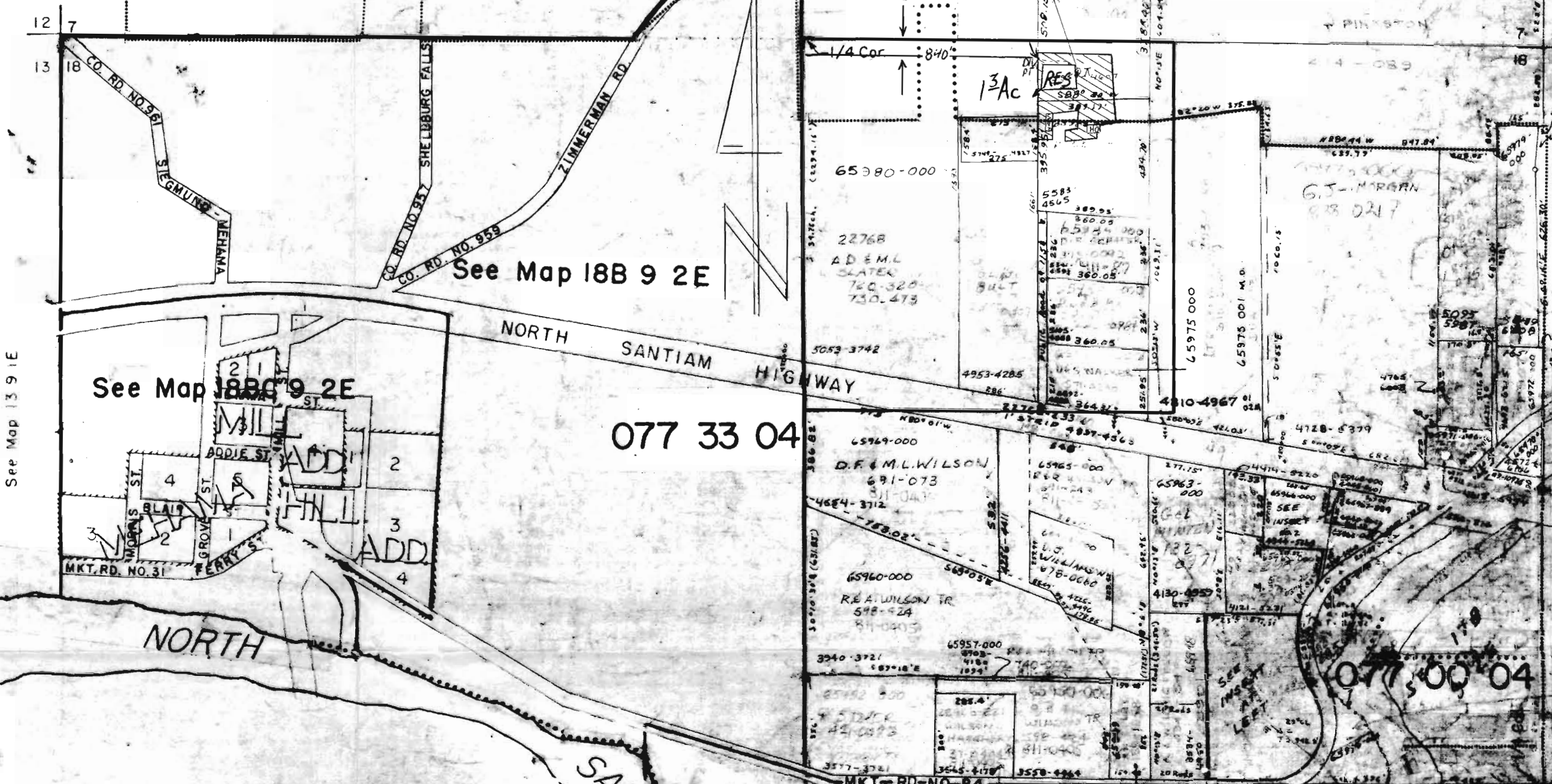
ROBERT B. HARWARD

Surveyed Dec. 11, 1991, by R.V. Kissen

See Map 7 9 2E

2 09 2 18 0

077 00 04



See Map 13 9 1E

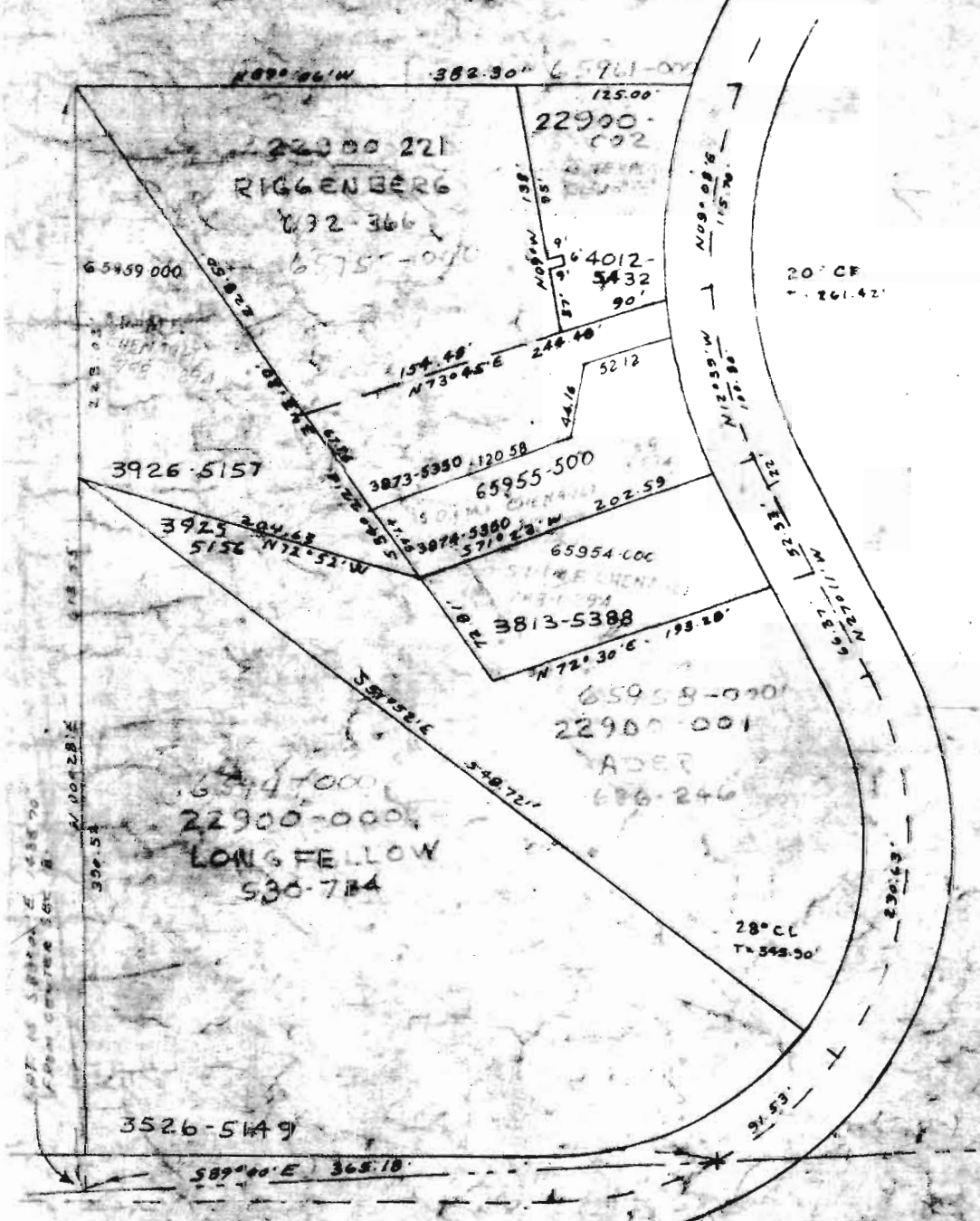
See Map 18B 9 2E

See Map 18C 9 2E

077 33 04

077 500 04

CAUTION
THIS MAP IS BASED UPON INFORMATION
FURNISHED BY LOCAL SURVEYORS AND INFORMA-
TION AVAILABLE FROM PUBLIC RECORDS. THIS
INFORMATION HAS NOT BEEN CHECKED BY MARION
COUNTY ENGINEERS. MARION COUNTY
ENGINEERS ACCEPT NO LIABILITY FOR ANY
ERRORS OR OMISSIONS OR FOR ANY DAMAGE
RESULTING FROM THE USE OF THIS MAP. THE
ENGINEER'S OFFICE IS NOT RESPONSIBLE FOR
ANY DAMAGE TO PERSONS OR PROPERTY.



LINN COUNTY

INSERT NO. 2		
65965-045	547 AC	WILSON TR. (578-424)
65966-000	142-331 AC	WILSON TR. (578-424)
65967-839	545-345 AC	WILSON TR. (578-424)
65968-000	285 AC	WILSON TR. (578-424)

SEE MAP 18D 9 2E

077 33 04

077 00 04

Section 18 T9S R2E WM
MARION COUNTY

18 9 2E
& INDEX

FINAL PROOF SURVEY

UNDER

Application No. 68999 Permit No. 50020

IN NAME OF

ROBERT B. HARWARD

Surveyed Dec. 11, 1991, by R. V. KLASSEN

1" = 400'

2 09 2 18 0

077 00 04

See Map 9 2E

See Map 18B 9 2E

See Map 18B 9 2E

077 33 04

077 00 04

See Map 13 9 1E

