

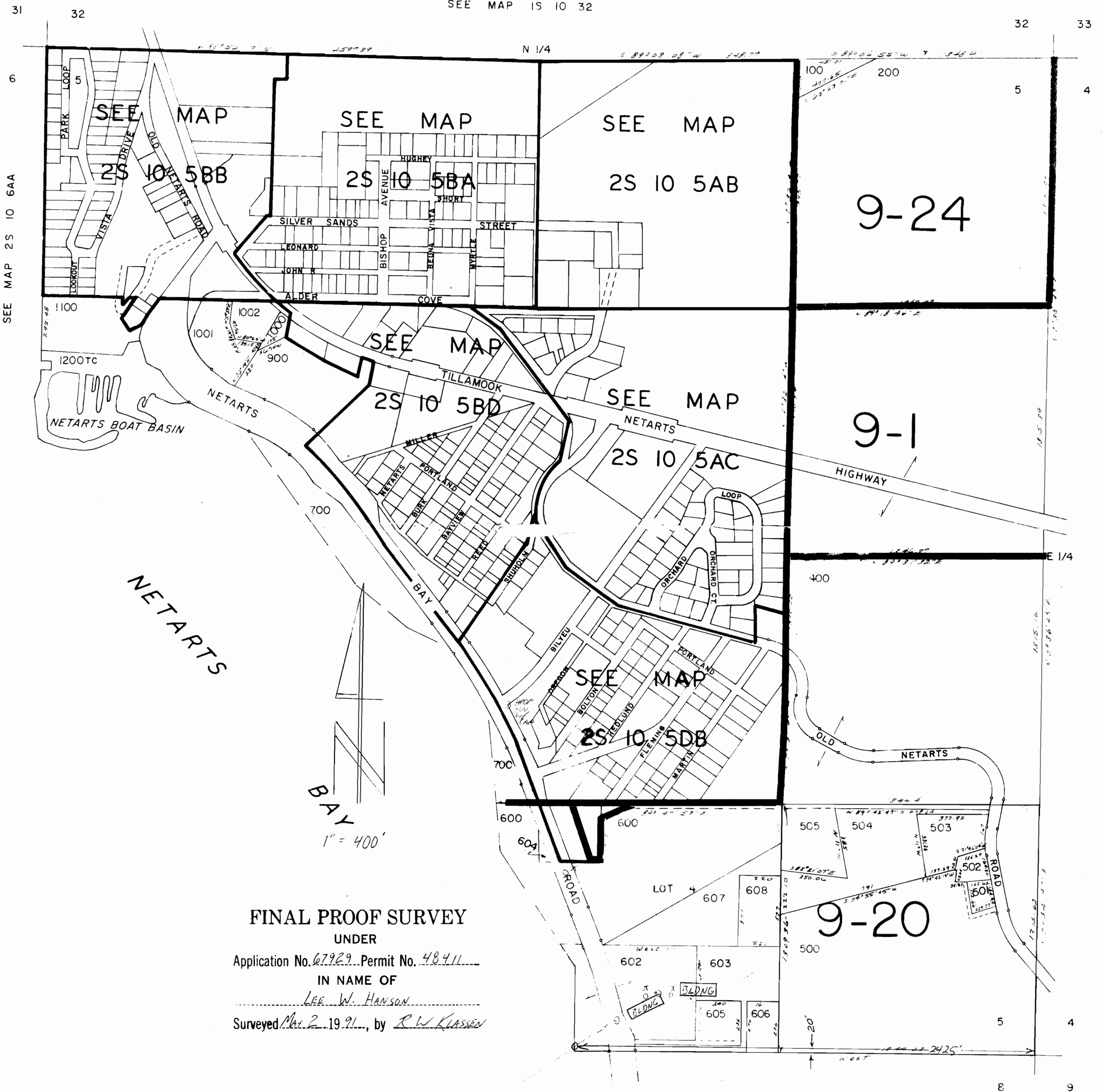
SECTION 5 T.2S. R.10W. W.M.  
TILLAMOOK COUNTY

2S 10 5  
& INDEX

This map was prepared for  
assessment purpose only.

1"=400'

SEE MAP 1S 10 32



CANCELLED  
601  
300  
800

SEE MAP 2S 10

FINAL PROOF SURVEY  
UNDER

Application No. 67929 Permit No. 48411

IN NAME OF

LEE W. HANSON

Surveyed Mar 2 1991, by R.W. KLASSEN

SEE MAP 2S 10 8

2S 10 5