

SEC. 3 T8S R5W W.M.

POLK COUNTY

8 5 3

SCALE 1"=400'

SEE MAP NO. 7 5 34 C

SEE MAP NO. 7 5 34 D

2-23

SEE MAP NO. 85-38B

2-5

FINAL PROOF SURVEY

UNDER R10589 49563 Application No. 68606...Permit No. 68607 IN NAME OF CARL A. GERLINGER Surveyed Aug. 13, 1991, by R.W. KLASSEN

DEAD	NO'S
TL	900 1103
TL	401 1503
TL	1101 2103
	1000 2104
	1002 1702
	1003 1802
	1004 300
	1005
	1006
	1007
	1008
	1009
	1001

SEE MAP NO. 8 5 4 A

SEE MAP NO. 8 5 2 2

SEE MAP NO. 8 5 4 D

11' WIDE 5' HIGH FLASHBARD

SE CORNER JOHN H. LEWIS DLC 42

NNW COR. DLC 48

Southwest Corner David Grant DLC No. 43

INT. COR. DLC 48

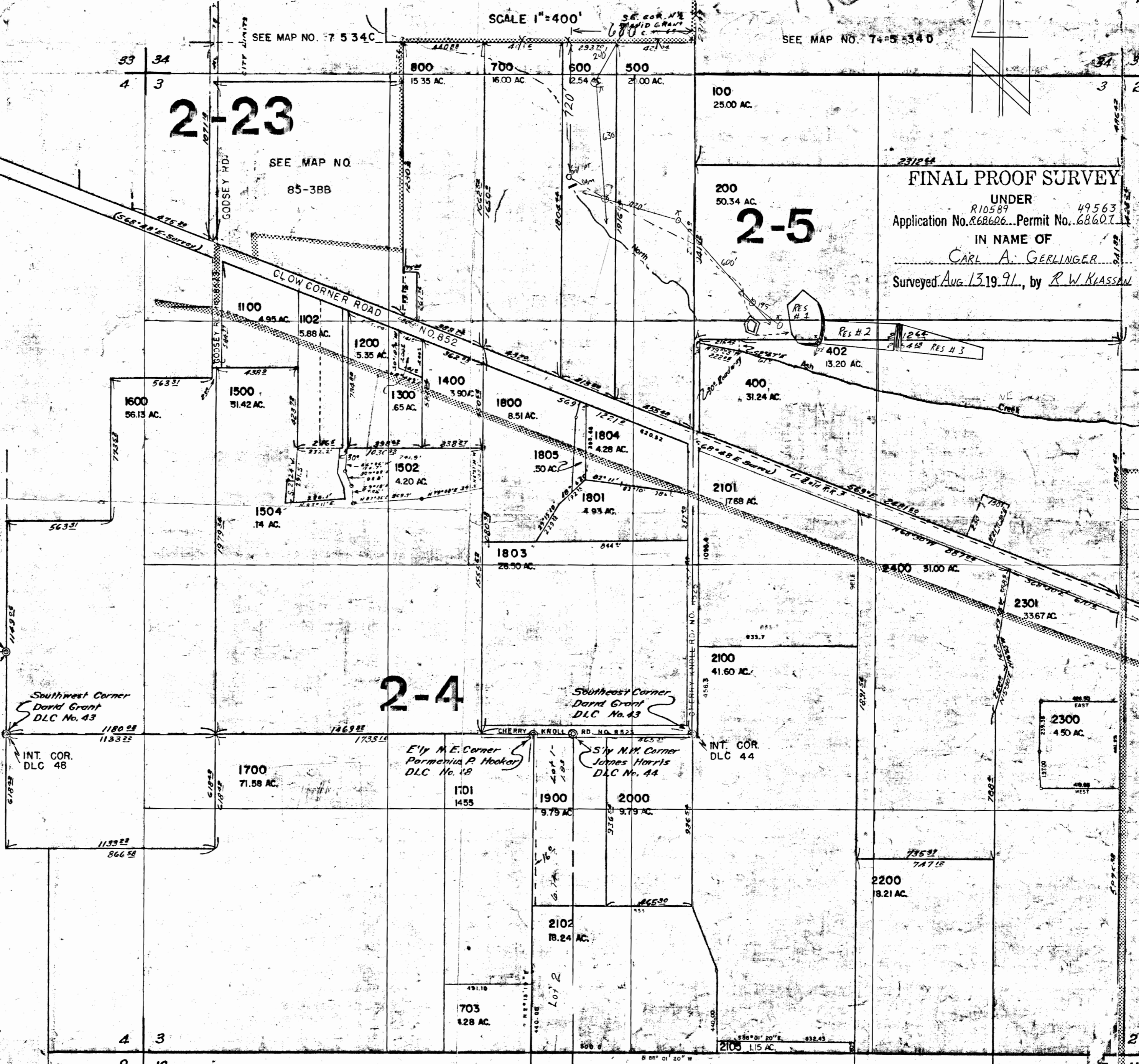
2-4

Southeast Corner David Grant DLC No. 43

Ely M.E. Corner Parmenia P. Hooker DLC No. 18

Sly N.M. Corner James Harris DLC No. 44

INT. COR. DLC 44



SEE MAP NO. 8 5 10