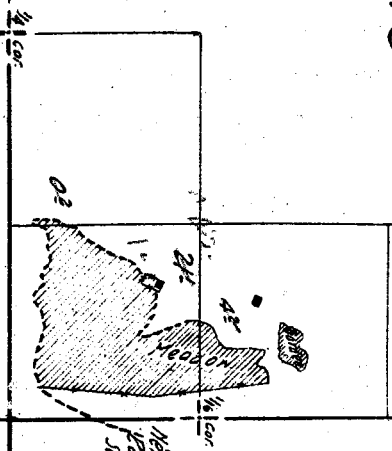


12324

16

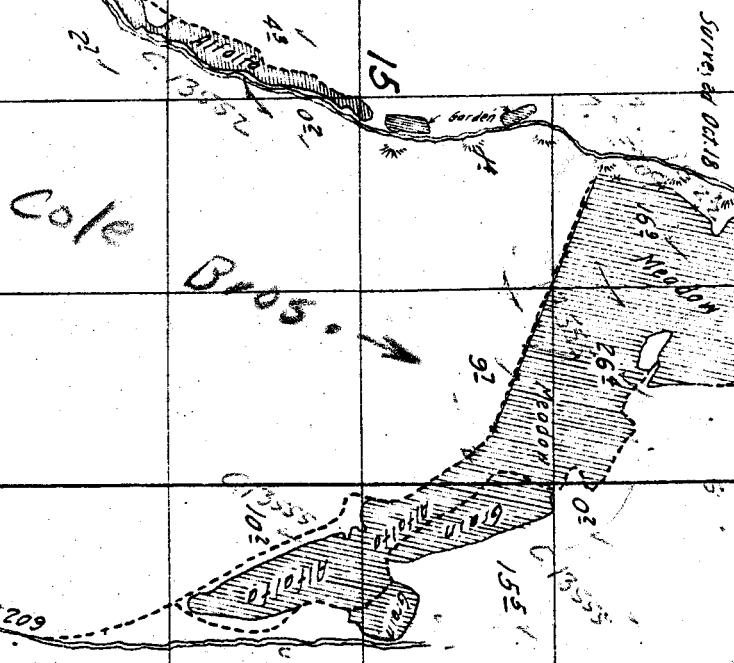
21

22



Helson and Campbell  
Surveyed Oct. 19, 1883

6 ft. Helson ditch  
Per. # 4325

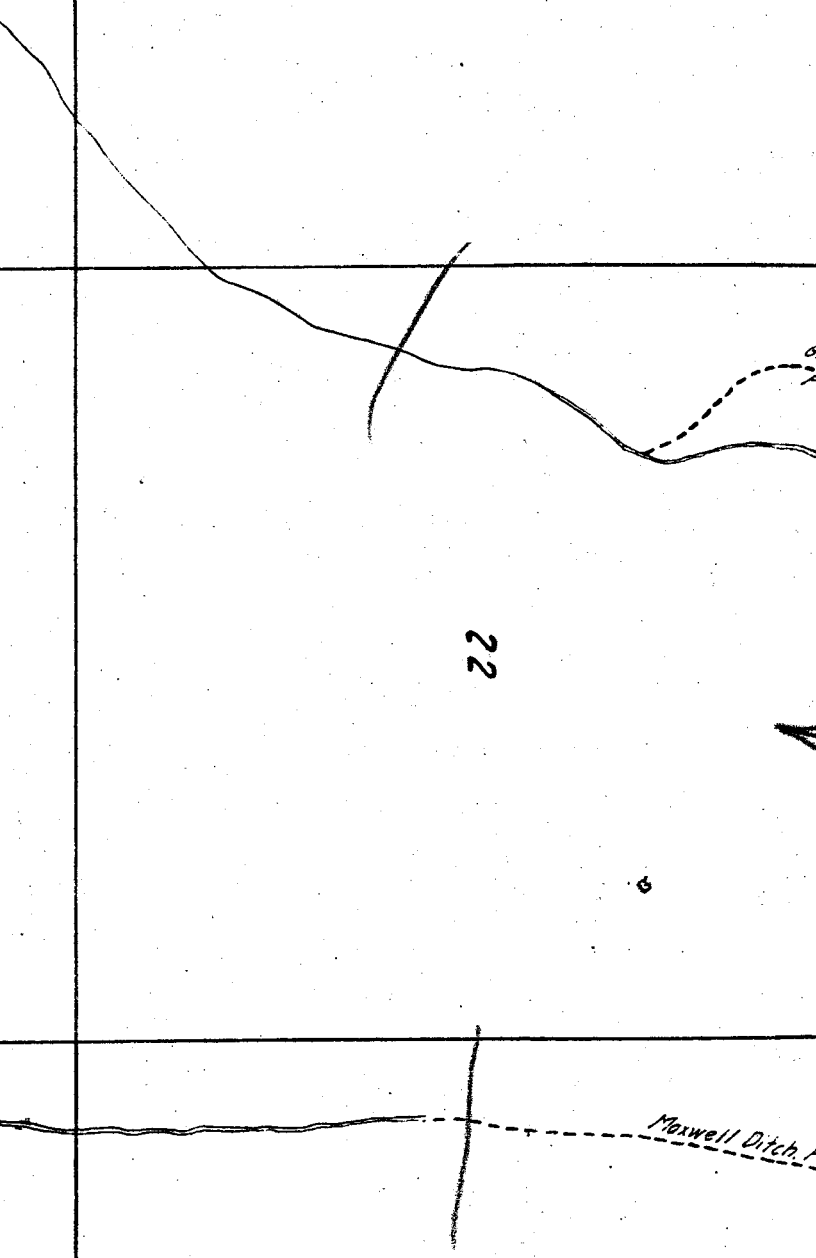


Cole Bros.

Maxwell Ditch, Per. # 209

Surveyed Oct. 18

Meadow



6

6M Nelson Reservoir  
Per #462

28

27

33

34

Maxwell Creek



19

20

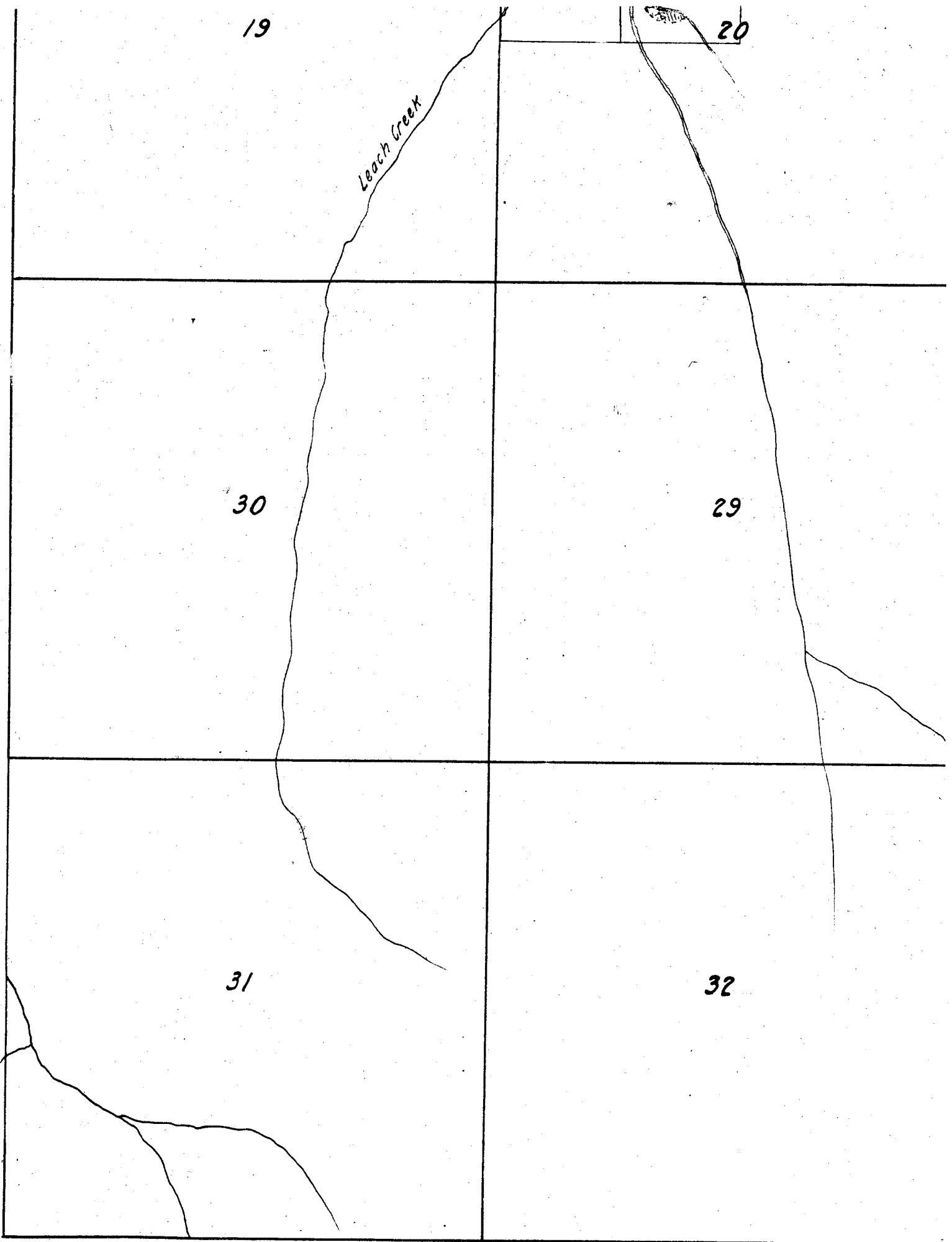
Leach Creek

30

29

31

32



23

24

26

25

MILL CREEK

35

36

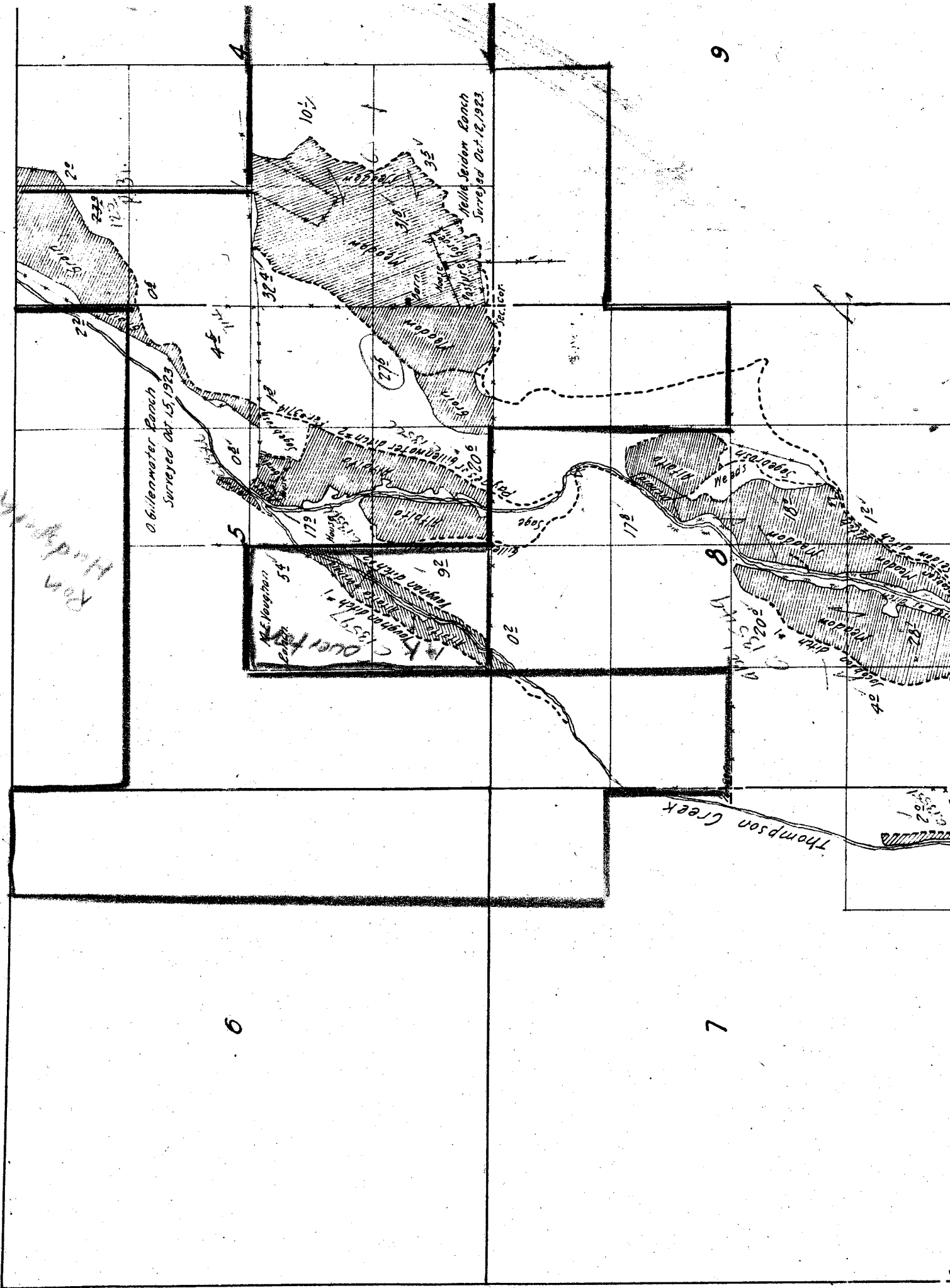
*NOTE: - Creeks sketched in approximate location from U.S. Township plats or from Forest Service map except in vicinity of irrigated areas. Permit ditches plotted in approximate location from permit maps except in vicinity of irrigated areas.*



Scale of Feet.

# Township

9



O'Brienwater Ranch  
Surveyed Oct. 15, 1923

Melle Jordan Ranch  
Surveyed Oct. 12, 1923

Thompson Creek

Handwritten note: *Handwritten text, possibly 'Hillside' or similar.*

6

7

4

5

8

Handwritten notes in section 5:  
M.E. Vaughan  
C. Duell  
K. Vaughan  
Handwritten text and numbers.

Handwritten notes in section 4:  
A.E. Hill  
Handwritten text and numbers.

Handwritten notes in section 9:  
Handwritten text and numbers.

Handwritten notes in section 8:  
Handwritten text and numbers.

Sec. 1 cor.

Sec. 1 cor.

6-5  
 1895  
 Mouse  
 Chas. Payne Ranch  
 Surveyed Oct. 27, 1883.  
 249  
 1896  
 T.M. Dove Ranch

John W. Brackett  
 Surveyed May 22, 24

6-2  
 1895  
 Kinney division box  
 E.H. Jacobson Ranch

18

17

16

2 Weir  
 32  
 51  
 06  
 17  
 1920  
 Wright Ranch  
 Surveyed Oct. 13, 20

70  
 52  
 06  
 12  
 20  
 1924  
 Melie Seidow Ranch  
 Surveyed Oct. 15, 23 and May 23, 24.

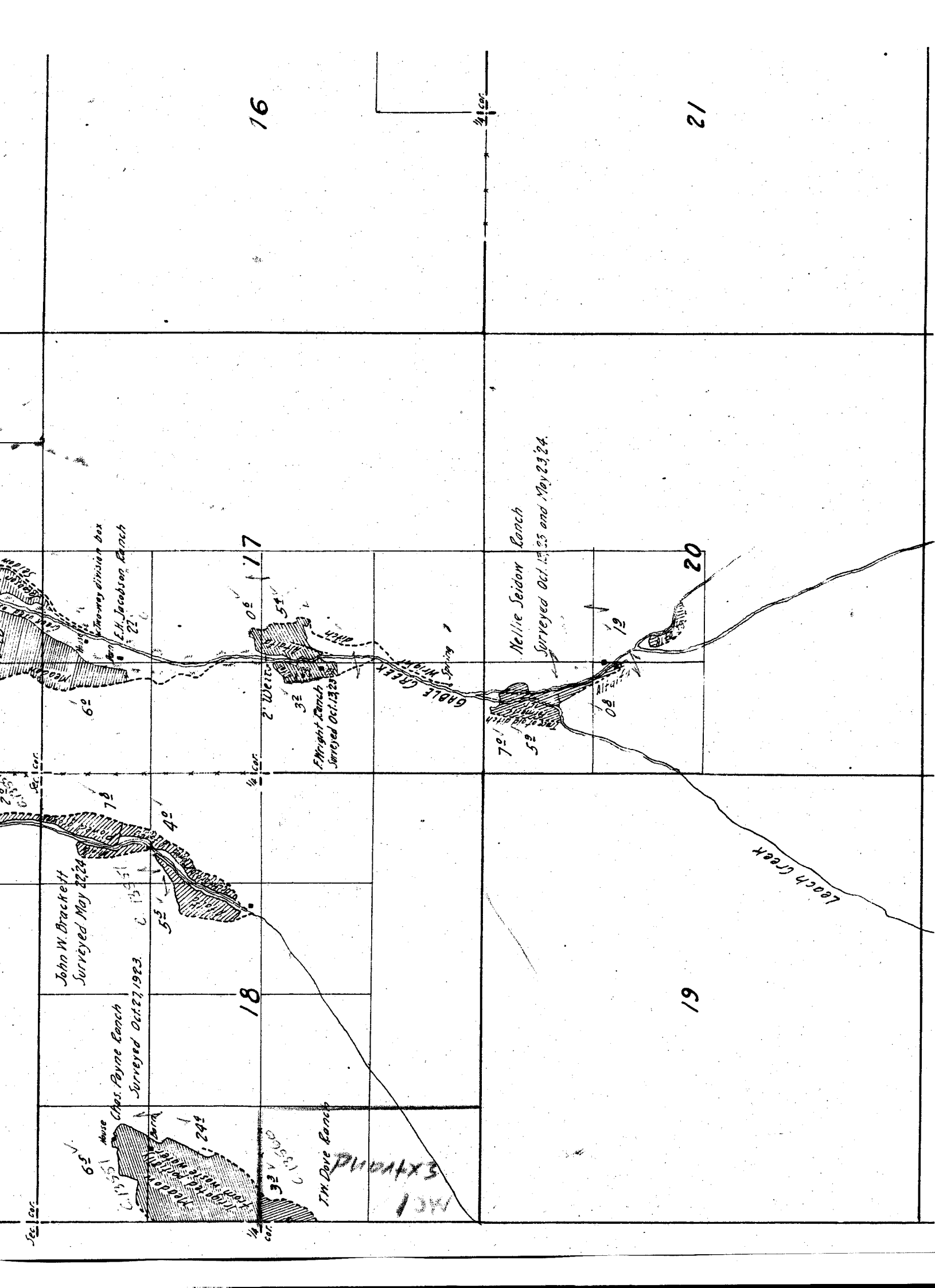
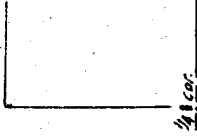
19

20

21

EXTENDED  
 1891

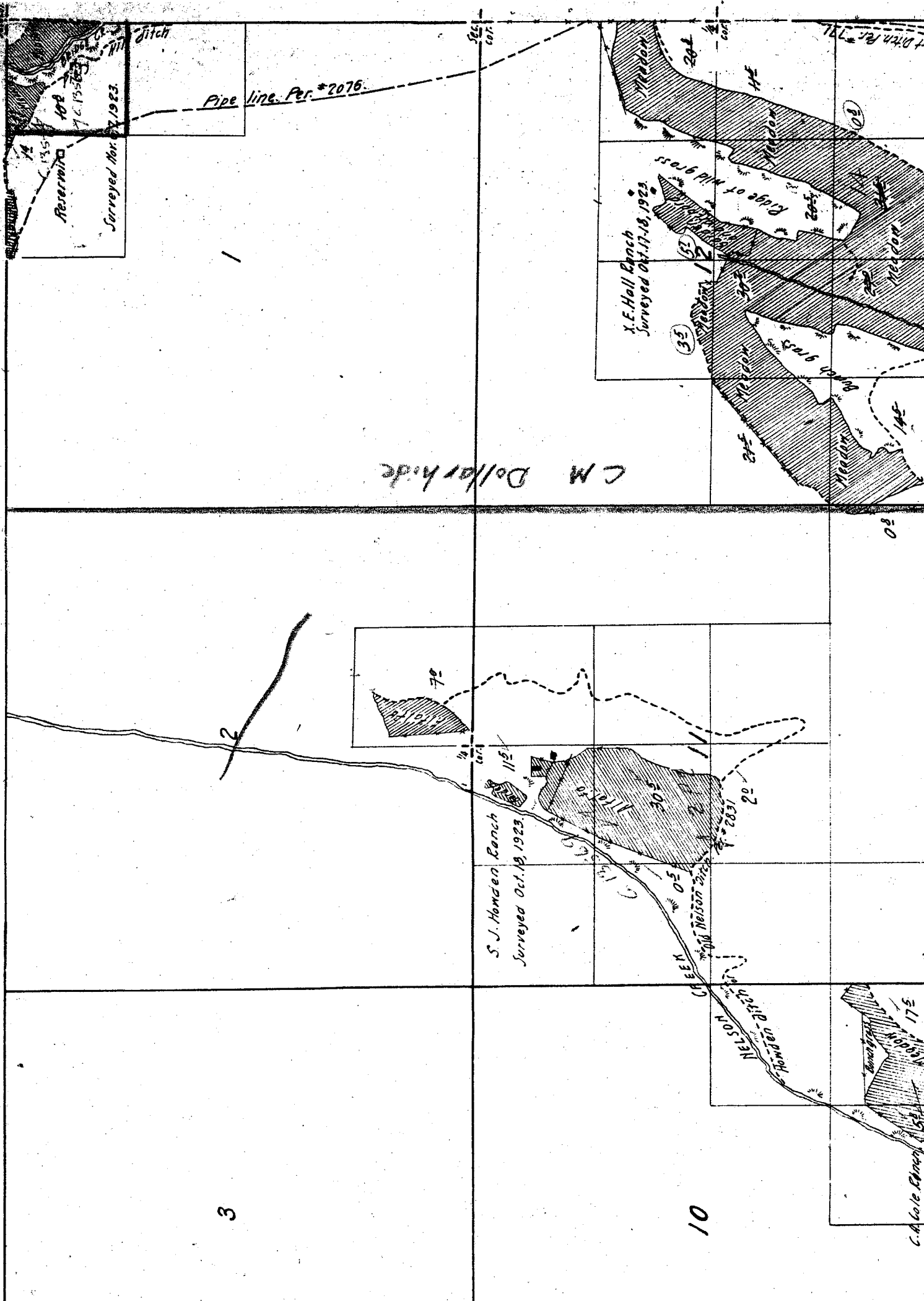
Leach Creek



3

10

C M Dollarhide



Reservoir

Surveyed Nov. 27, 1923.

Pipe line Per. \*2076.

X. E. Hall Ranch  
Surveyed Oct. 17-18, 1923

S. J. Handen Ranch  
Surveyed Oct. 19, 1923.

C. A. Cole Ranch

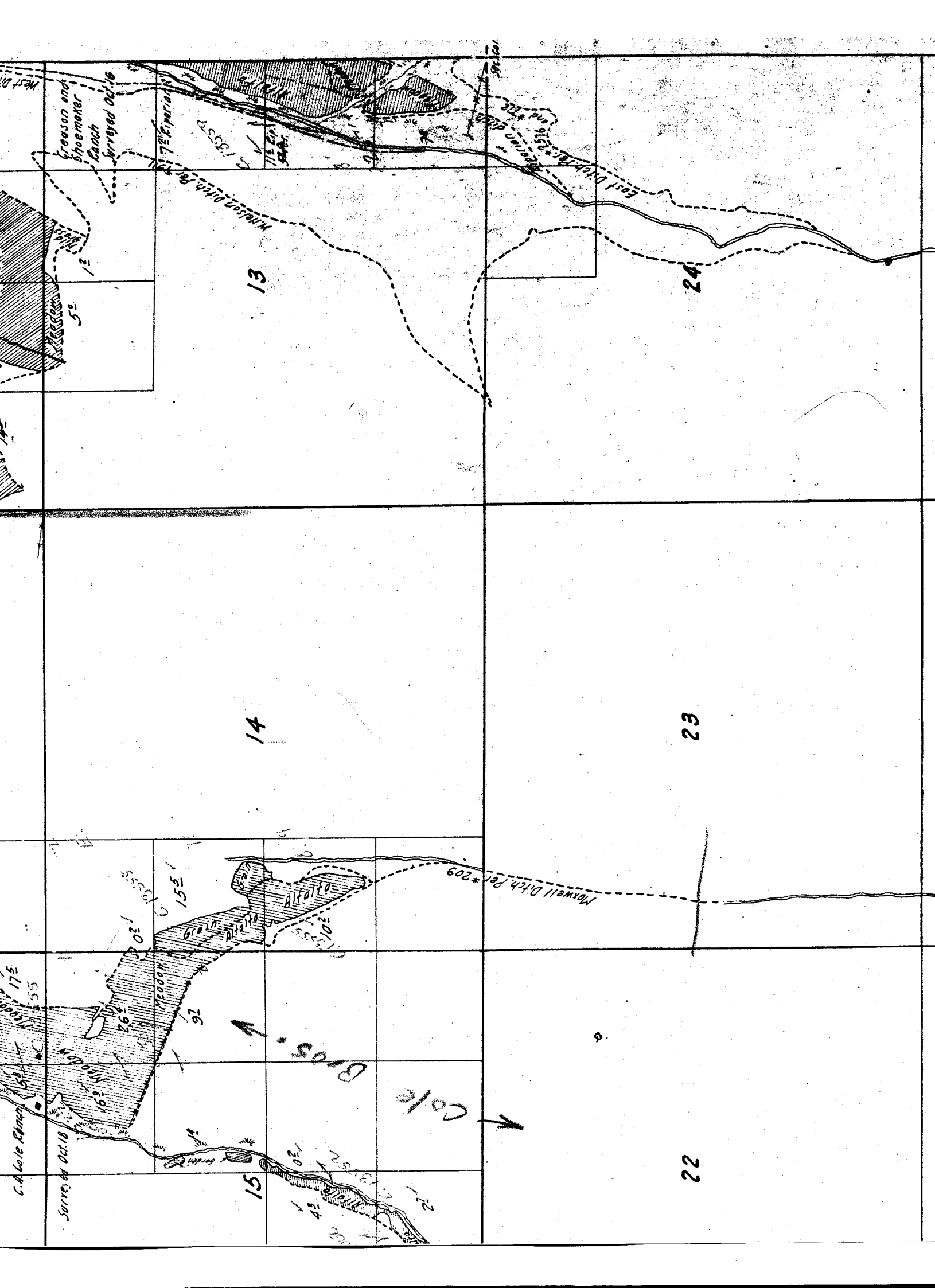
Surveyed Nov. 27, 1923.

CREEK NELSON

CREEK NELSON

Ridge of wild grass

ditch



Cresson and Shoemaker Ranch  
Surveyed Oct. 16

Mason Ditch Per #178

East Ditch Per #151 and #112

13

24

14

23

C.A. Cole Ranch  
Surveyed Oct. 18

Surveyed Oct. 18

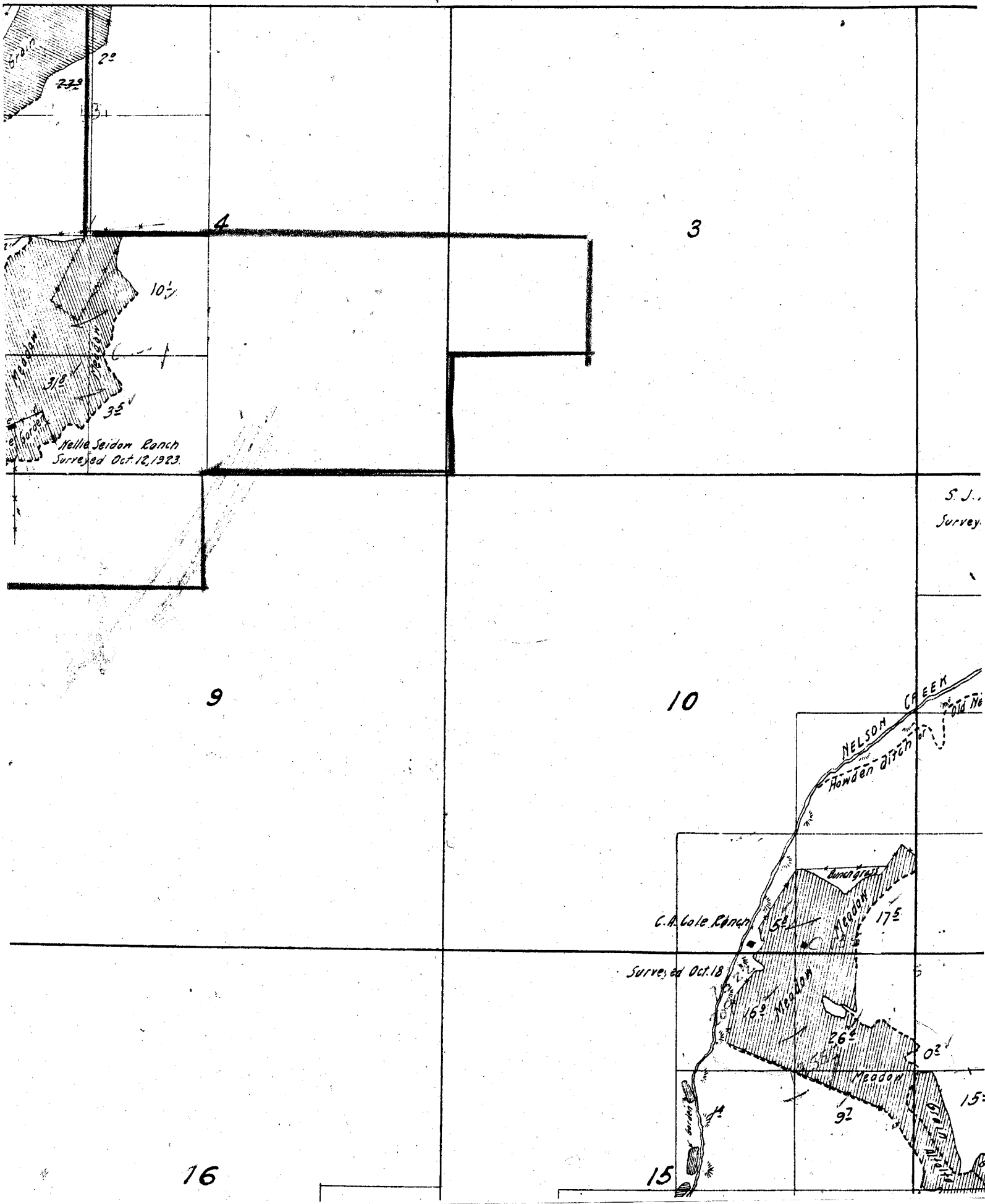
Cole Bros.  
Cole

15

22

12  
13  
14  
15  
16  
17  
18  
19  
20  
21





S. J.  
Survey

13

24

14

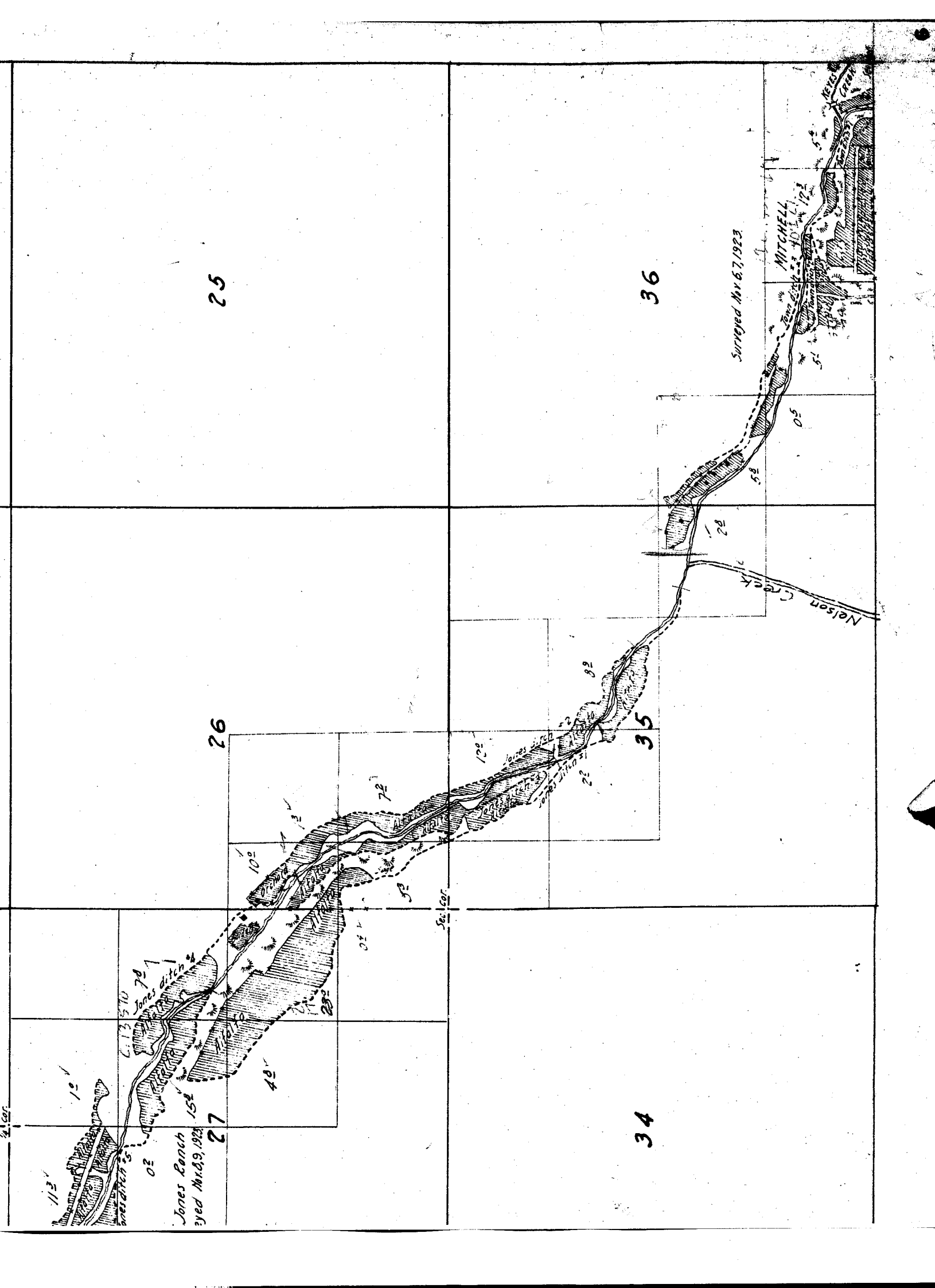
23

15

*is partly sketched in approximate  
from U.S. Township plat.*

22

4100



25

36

26

35

27

34

Surveyed May 6, 1923

MITCHELL

Nelson Creek

Jones Ranch  
Surveyed May 6, 1923

Jones ditch

113'

15'

40'

25'

05'

50'

100'

72'

82'

22'

25'

50'

KEY

172'

172'

50'

50'

50'

50'

50'

50'

50'

50'

50'

50'

E.

6-1-1

2

1

11

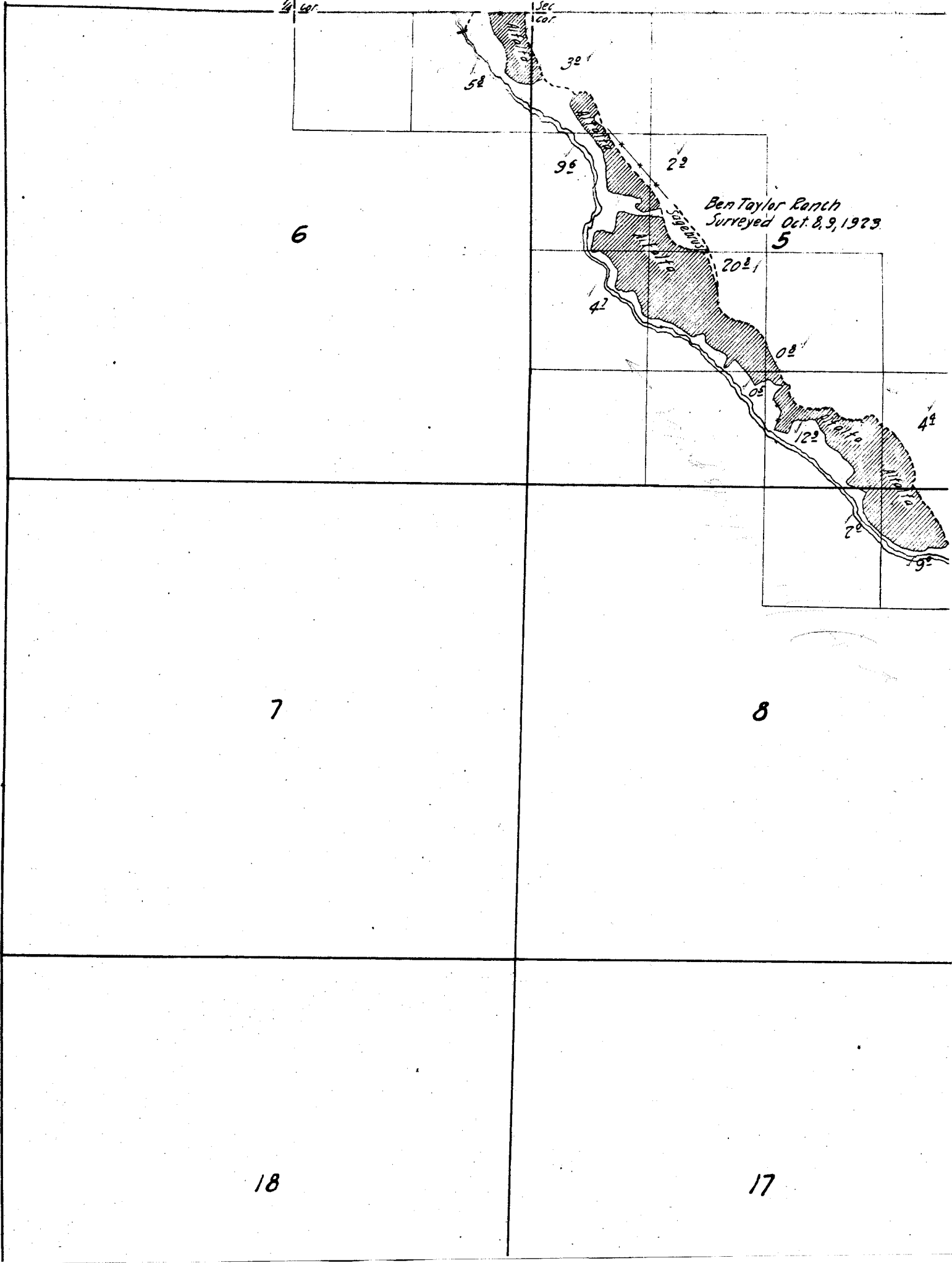
12

14

13

1/4 Cor.

1/4 Sec  
1/4 Cor.



Ben Taylor Ranch  
Surveyed Oct. 8, 9, 1923

6

5

7

8

18

17

52

32

96

22

20 1/2

42

02

05

42

122

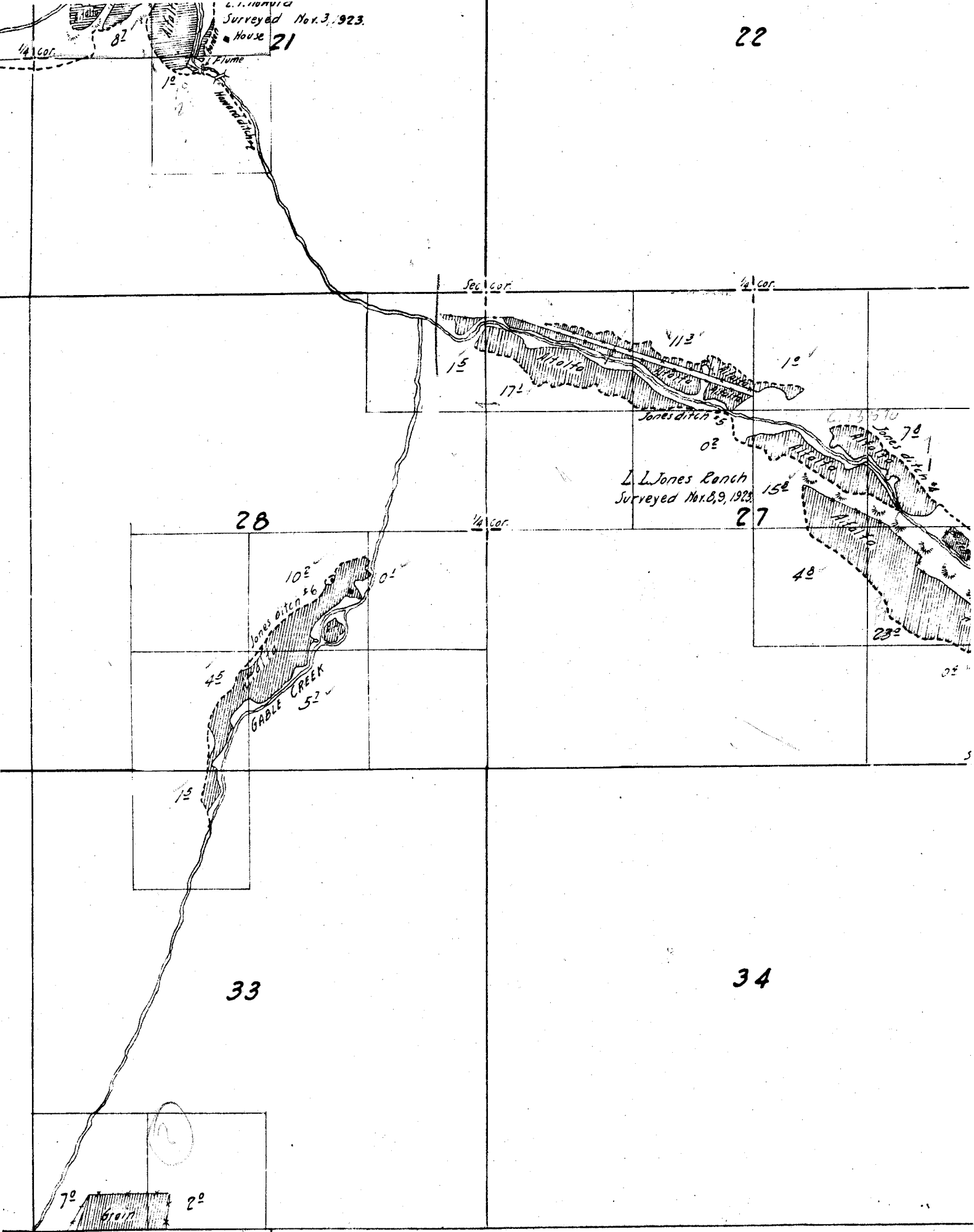
22

26

L. L. Jones  
Surveyed Nov. 3, 1923.

House 21

22



28

L. L. Jones Ranch  
Surveyed Nov. 8, 9, 1923.

27

33

34

70 20

16

17

18

19

20

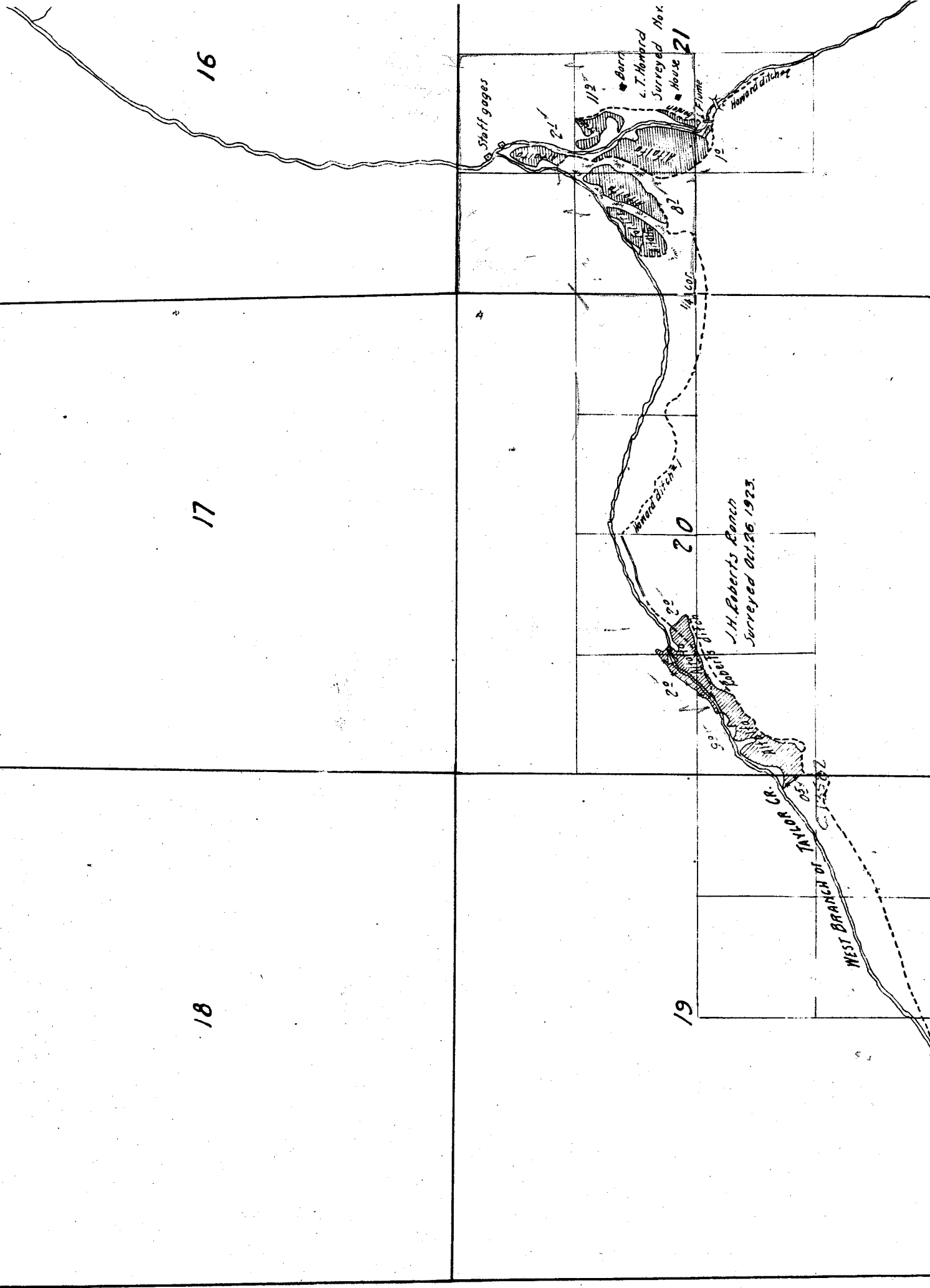
21

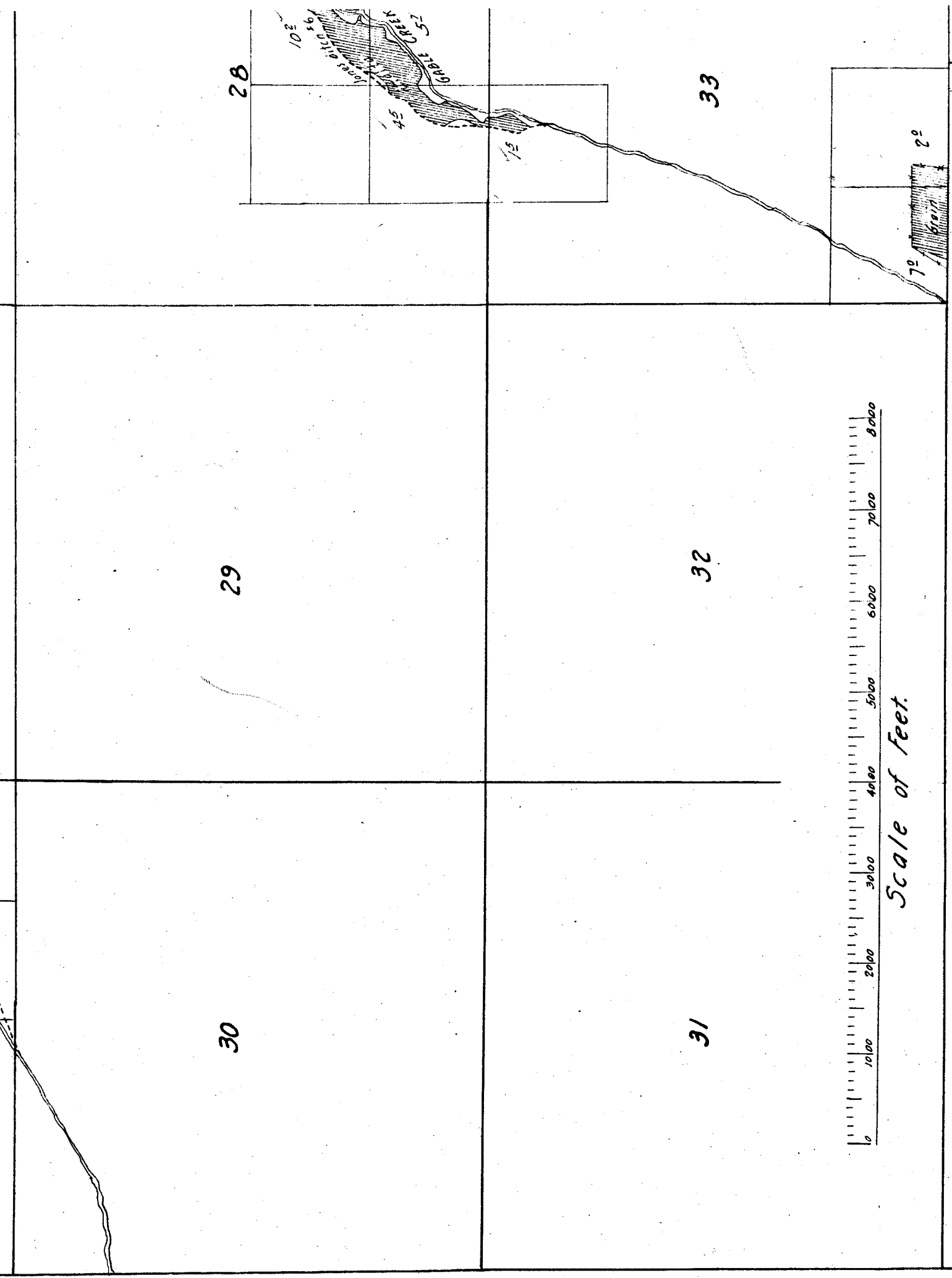
Staff gages

L.T. Howard  
Surveyed No. 21  
House

L.H. Roberts's Ranch  
Surveyed Oct. 26, 1923.

WEST BRANCH of  
C. 125-202





28

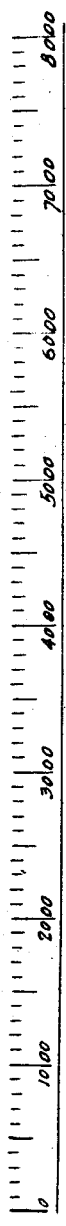
33

29

32

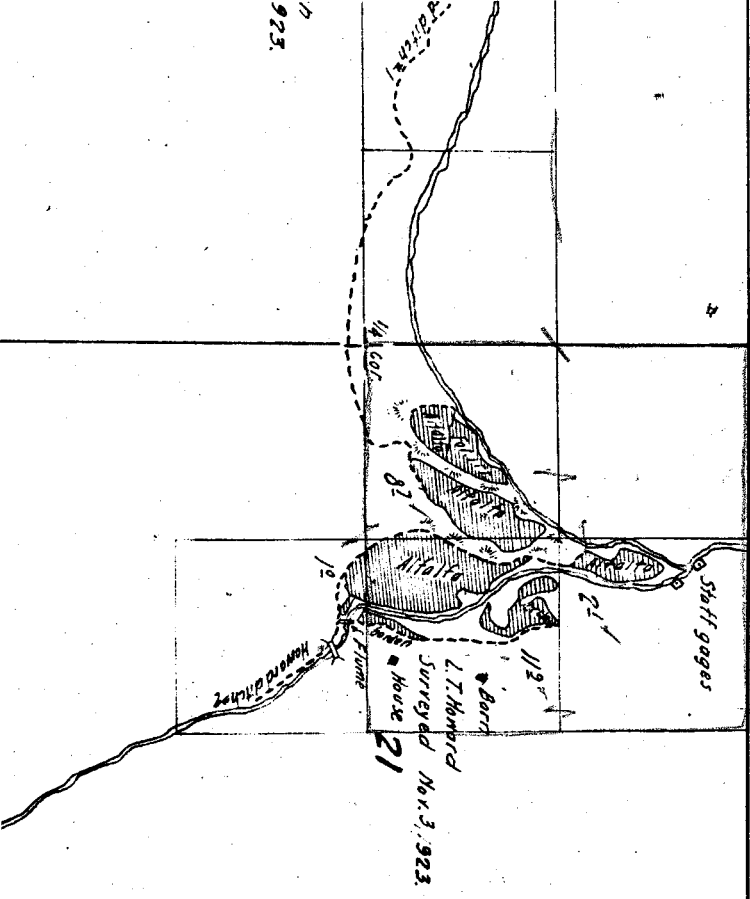
30

31



Scale of Feet.





7  
923

16

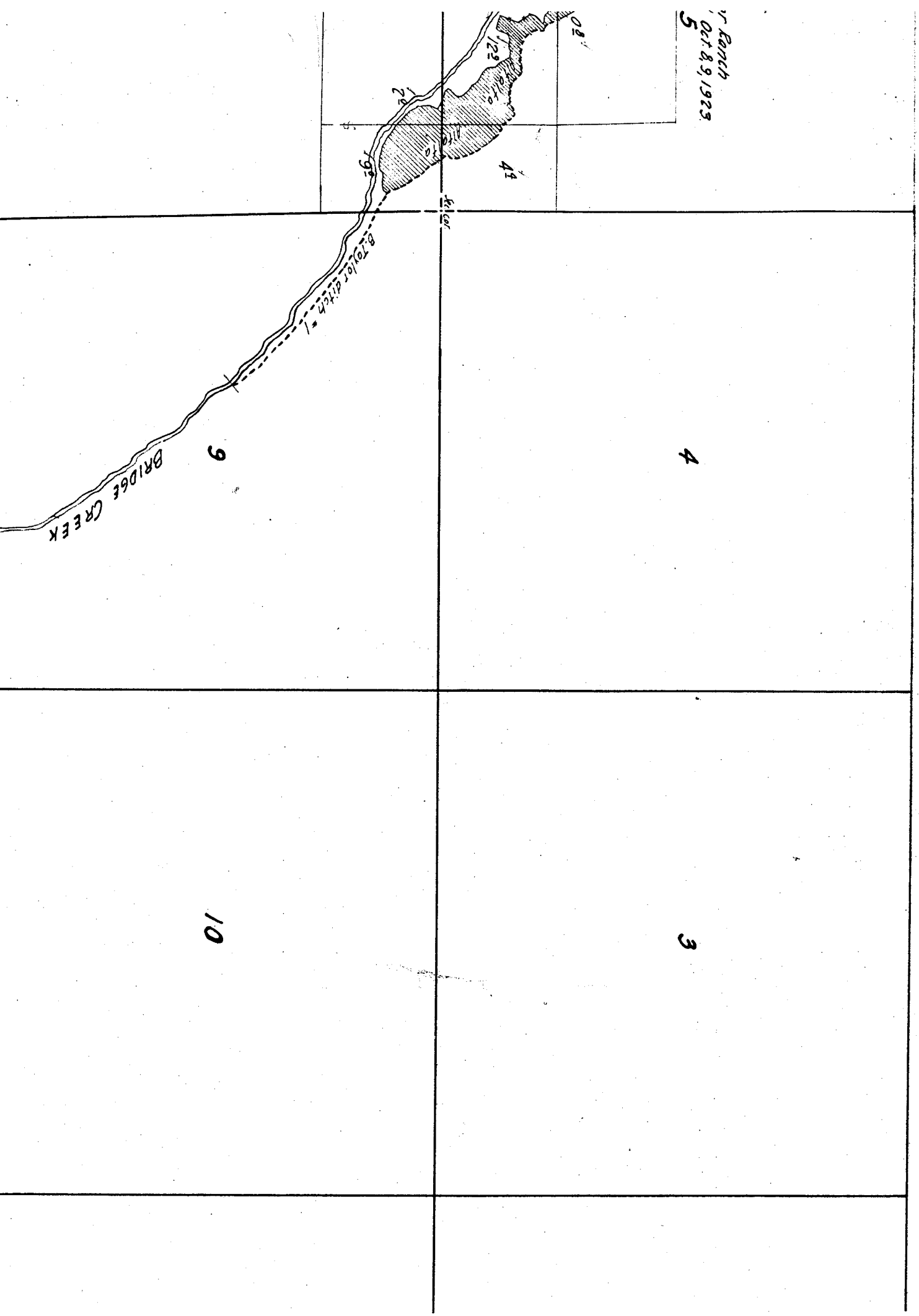
15

22

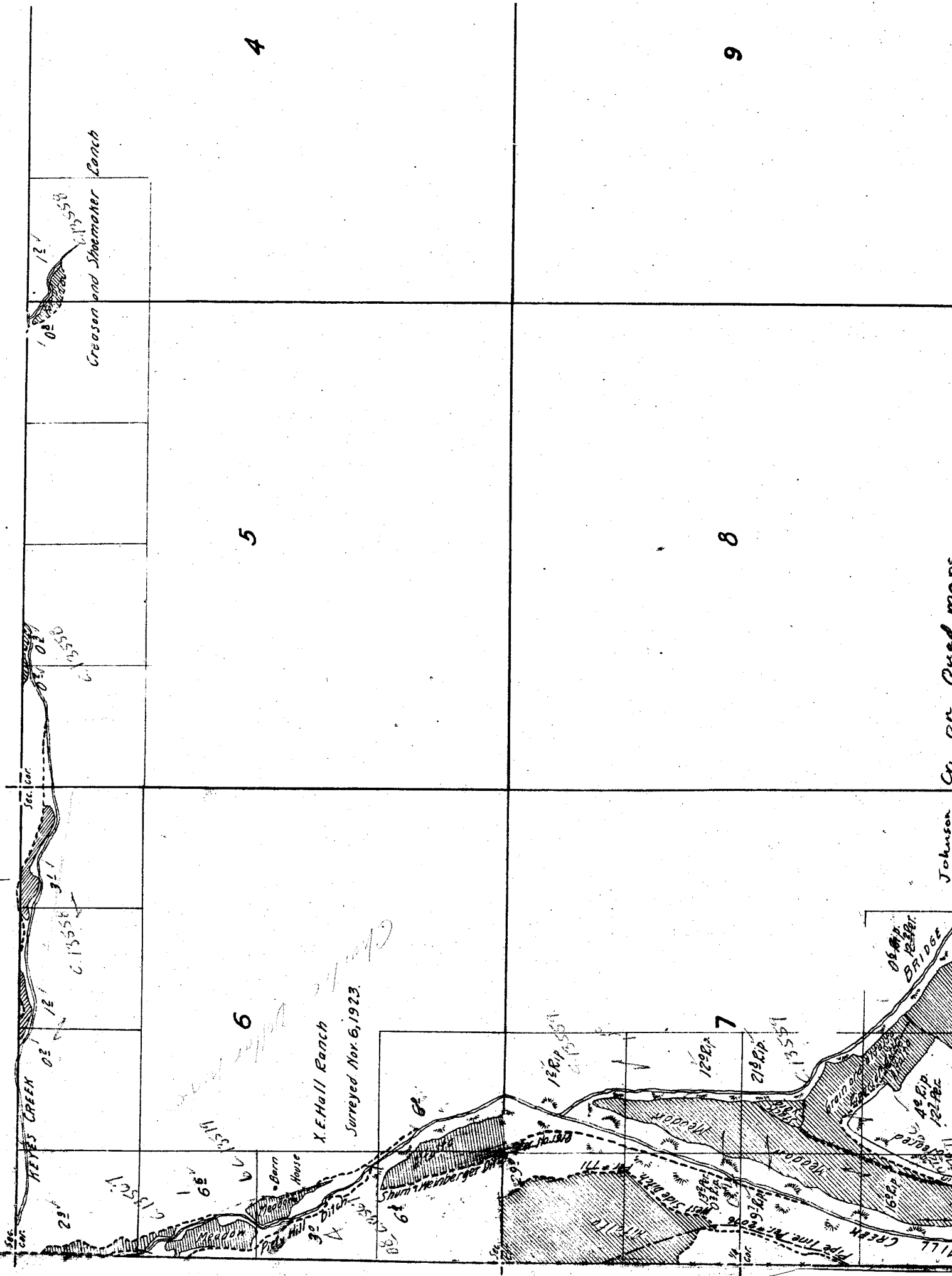
*Note: Creeks partly sketched in approximate location from U.S. Township plat.*

Township 11 S, Range 21 E.

Mr. Ranch  
Oct 8, 9, 1923  
5



# Township 1



4

9

5

8

6

7

X.E. Hall Ranch  
Surveyed Nov. 6, 1923.

Barn House

HEYES CREEK

Creason and Shoemaker Ranch

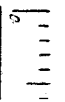
Johnson Cr. on Creek map

28

33

27

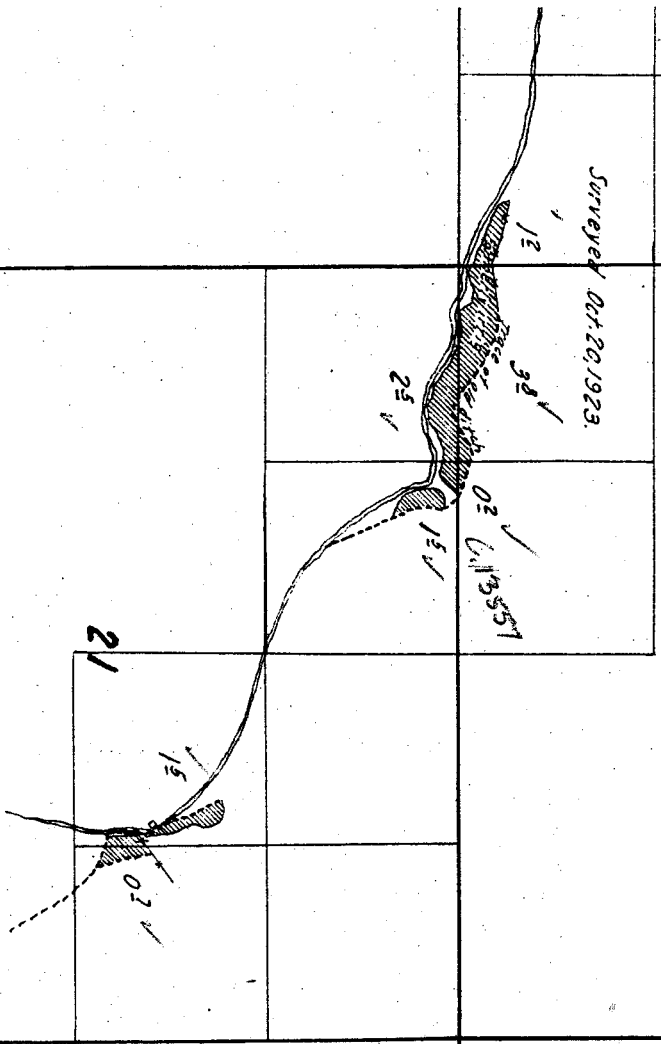
34



16

15

Surveyed Oct. 20, 1923.

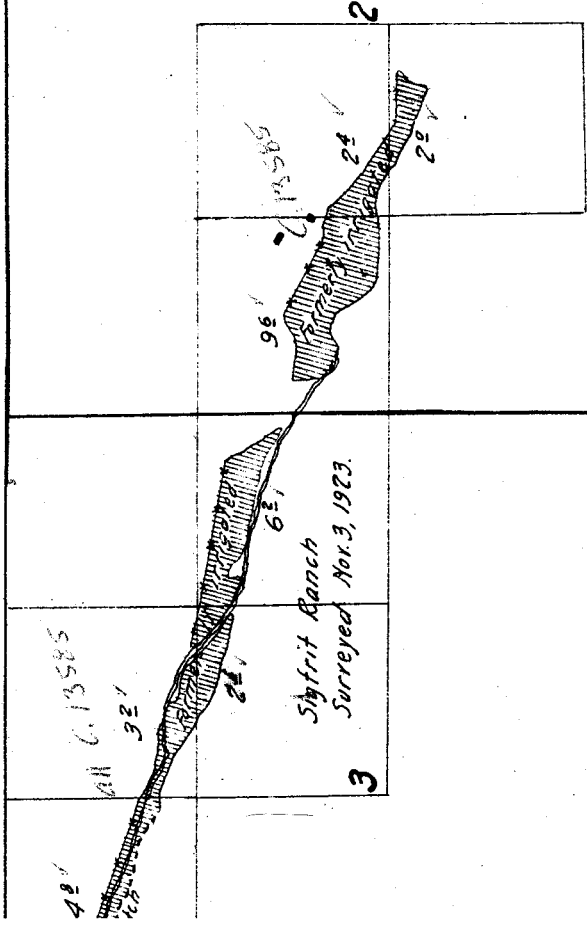


21

22

Range 22 E.

11-1-1



10

11

12

13

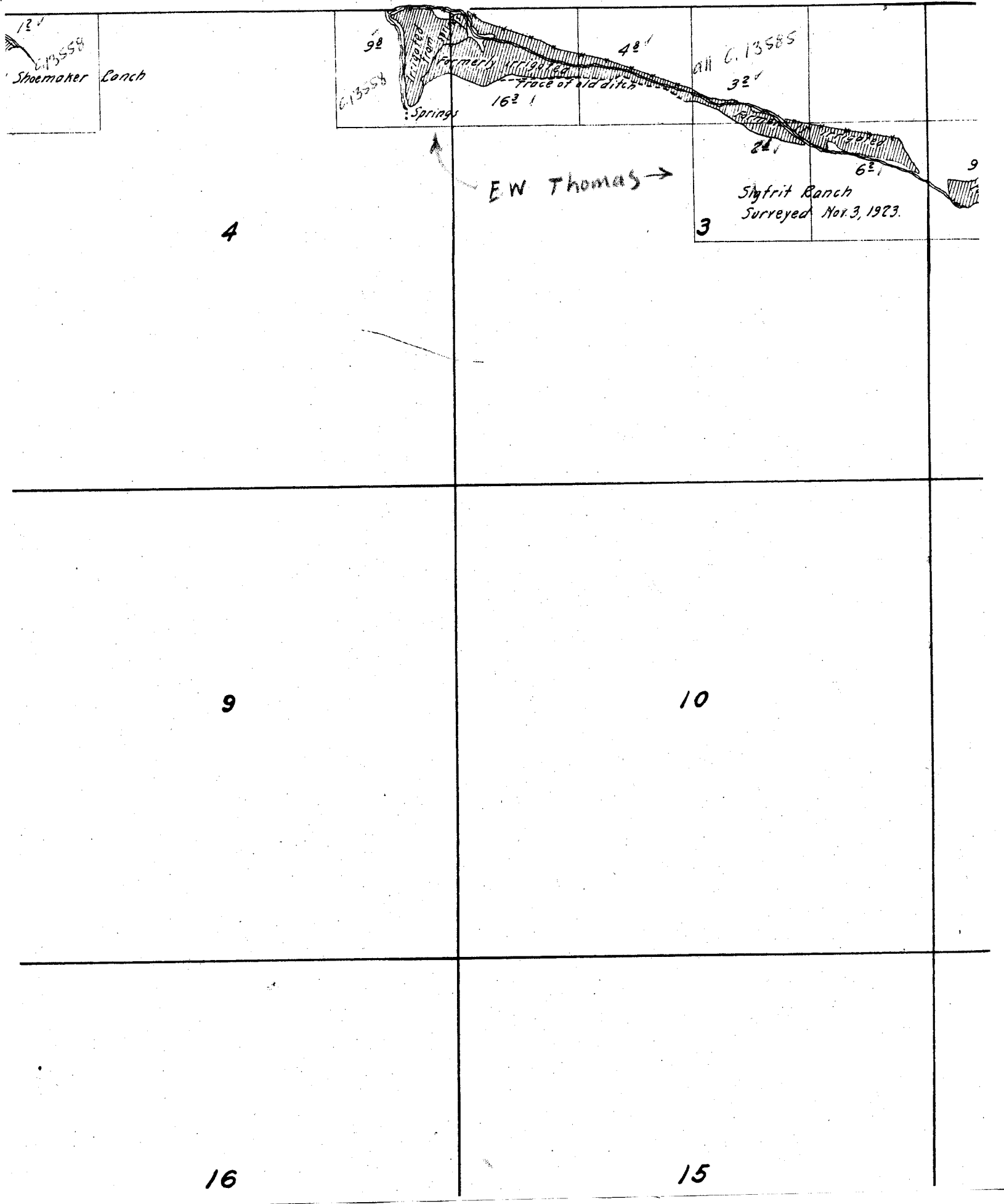
24

14

23

15

22



13'  
C. 13558  
Shoemaker Ranch

92  
C. 13558  
Irrigated from Springs  
Formerly irrigated  
Trace of old ditch  
42'  
32'  
24'  
6'  
Styfrid Ranch  
Surreyed Nov. 3, 1923.  
9

E.W. Thomas →

4

3

9

10

16

15



19

20

30

29

31

32

23

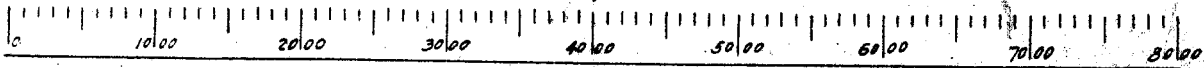
24

26

25

35

36



Scale of Feet.

26" x 27"

23

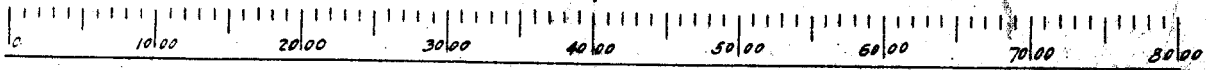
24

26

25

35

36



Scale of Feet.

26" x 27"