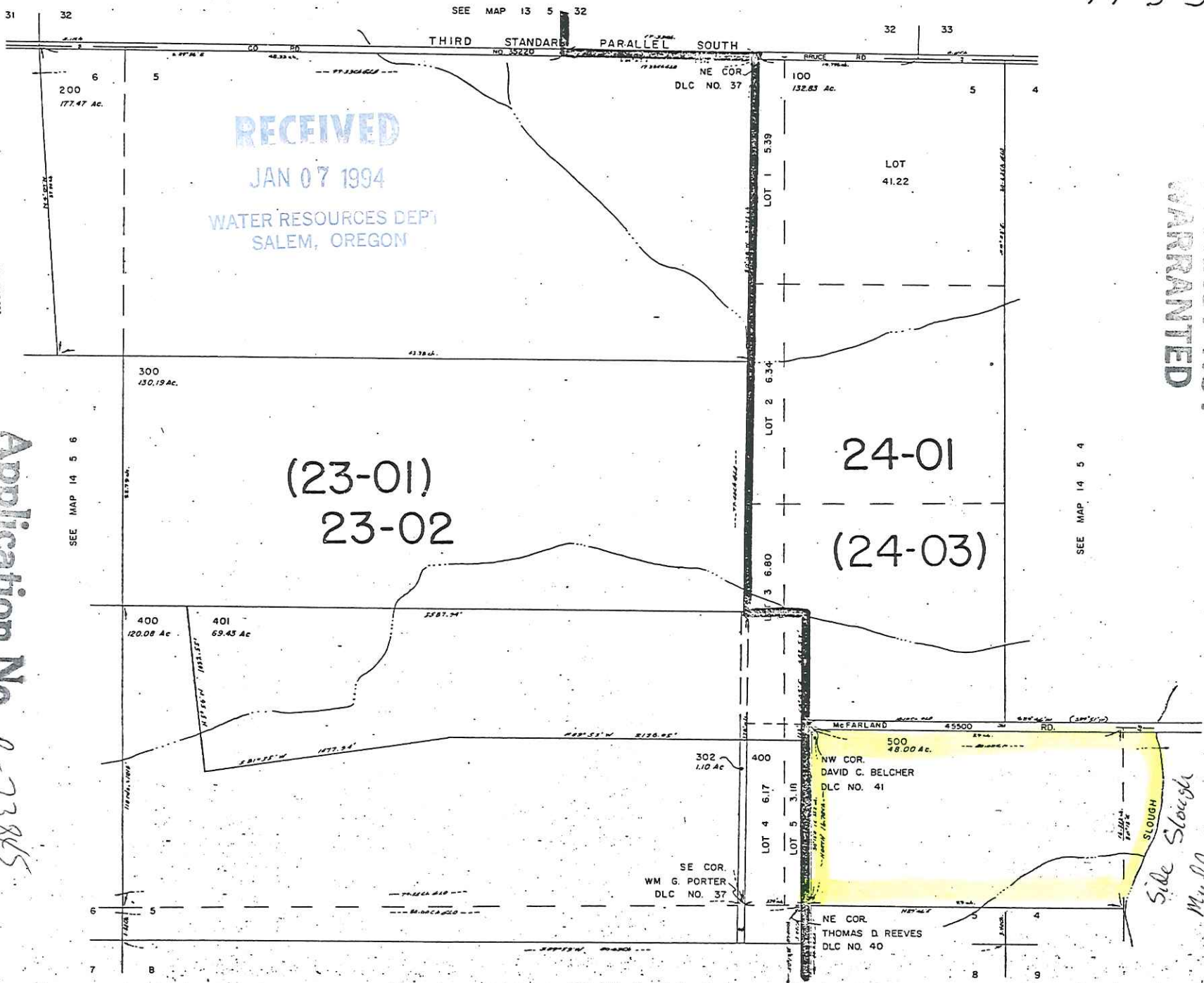


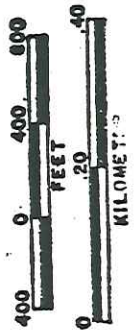
14 5 5



RECEIVED
 JAN 07 1994
 WATER RESOURCES DEPT
 SALEM, OREGON

ACCURACY NOT
 WARRANTED

SCALE 1:9600.



Application No. 2-73845
 Permit No.

CERTIFICATE NO. 69057

(23-01)
 23-02

24-01
 (24-03)

T. 14 S., R. 5 W. ^{W.M.}
N15

NOT TO SCALE

PG

50.1

34.9

2.2

2.35

5.

T567

5 4
8 9

2/
5.6

1/85.7

T888

7/
3.8

2.0

Muddy creek
~~Had~~

6/
48.6

RECEIVED

JAN 07 1994

WATER RESOURCES DEPT
SALEM, OREGON

T581

2/
15.5

3/
3.4

4/
55.3

4/
4.5

No. K73845

T. 14 S., R. 5 W. ^{WM}
N15

NOT TO SCALE

PC

50.1

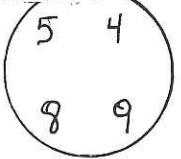
34.9

2.2

2.35

5.

T567



$\frac{2}{5.6}$

$\frac{7}{3.8}$

T888

$\frac{1}{85.7}$

2.0

Muddy creek
~~Had~~

$\frac{6}{48.6}$

RECEIVED

JAN 07 1984

WATER RESOURCES DEPT
SALEM, OREGON

Ponds

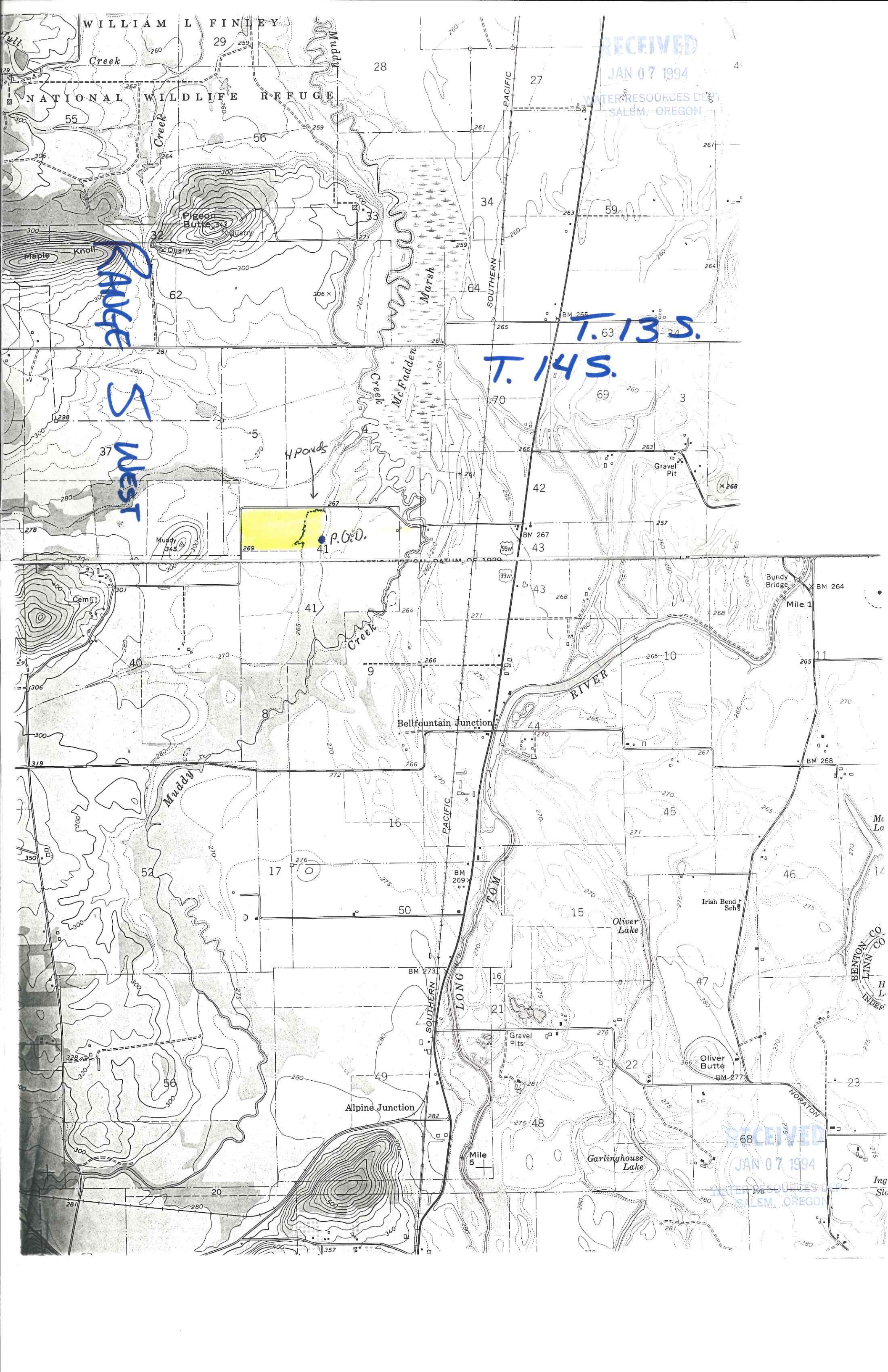
- 1) 23 > 235
 - 2) 235 > ~~300~~ 22
 - 3) 525 > ~~600~~ 735
 - 4) 21 > 260
-
- +

~~15.5~~ ac. H

$\frac{3}{3.4}$

$\frac{4}{55.3}$

No. K73845



WILLIAM L FINLEY

RECEIVED
JAN 07 1994
WATER RESOURCES DEPT
SALEM, OREGON

NATIONAL WILDLIFE REFUGE

RAVE
5
WEST

T. 63 13 S.
T. 14 S.

4 ponds
P.G.D.

RECEIVED
JAN 07 1994
WATER RESOURCES DEPT
SALEM, OREGON

Creek

Creek

Muddy

Pigeon Butte

Marsh

Creek

McFadden

RIVER

Bellfountain Junction

Muddy

PACIFIC

LONG

TOM

Oliver Lake

Alpine Junction

Garlinghouse Lake

BENTON CO
LINN CO
H L
INDEX