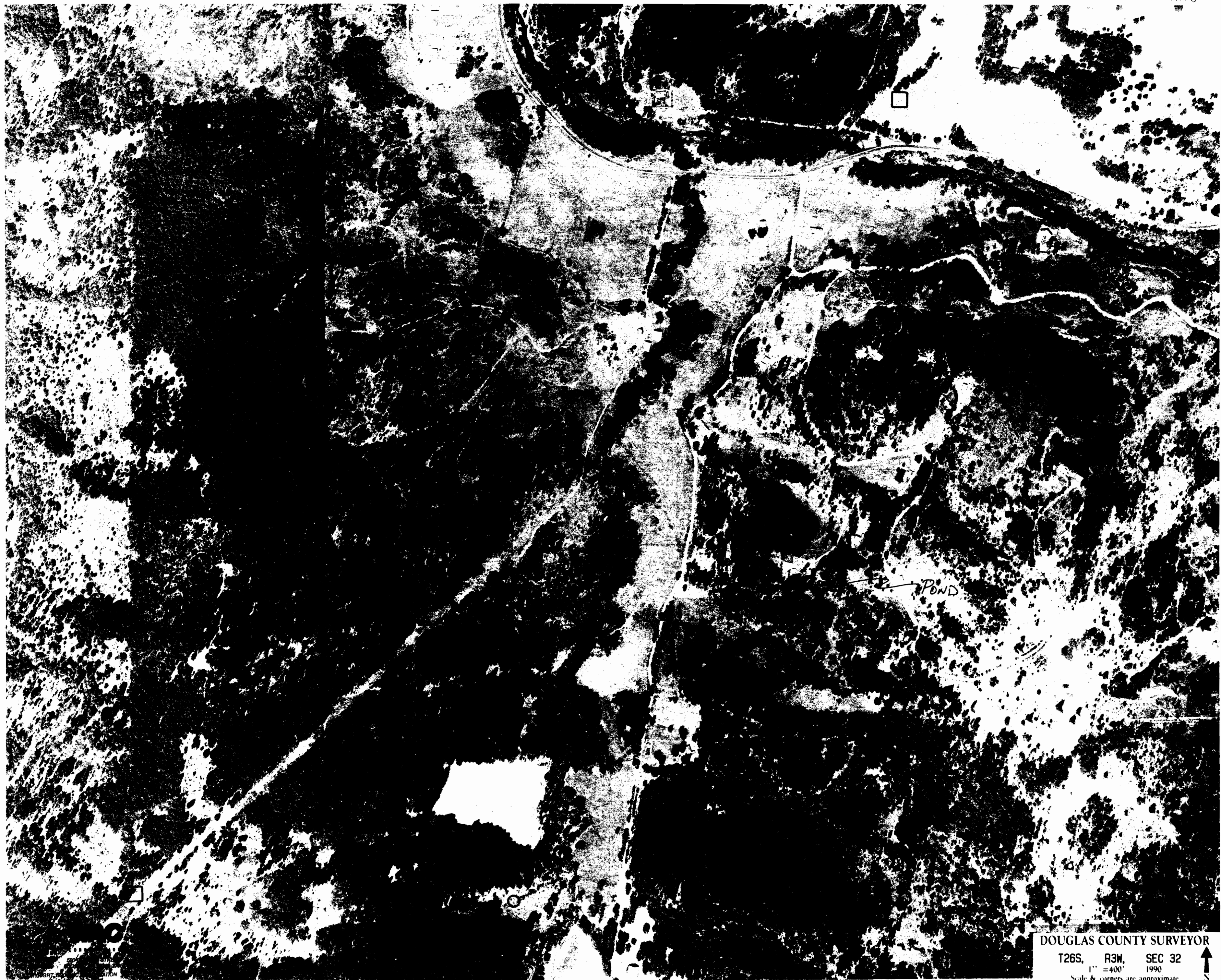


No Final Proof Map available

No Permit Map available

R 74200



DOUGLAS COUNTY SURVEYOR

T26S, R3W, SEC 32
1" = 400' 1990

Scale & corners are approximate



CERTIFICATE NO. 00170

Application No. R-74200
Permit No.

JUN 1 1994

WATER RESOURCES
SALEM, OREGON