

From: Ben & Kids
MLS # 26595 Oakview

RECEIVED

21 AUG 25 1994

WATER RESOURCES DEPT.
OREGON

EE MAP 26 6 20D
N69°51'E

207.51'

2-11 AC

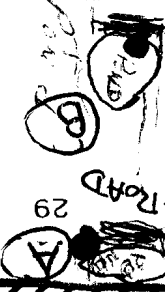
428 OAKVIEW

PARCEL 1

PONDS

PLAT

House



o = outlet

Application No. R-74473

Permit No.

SEE SURVEY
M43-36

4-02

SEE SURVEYS
RM1-67
AND
RM1-68

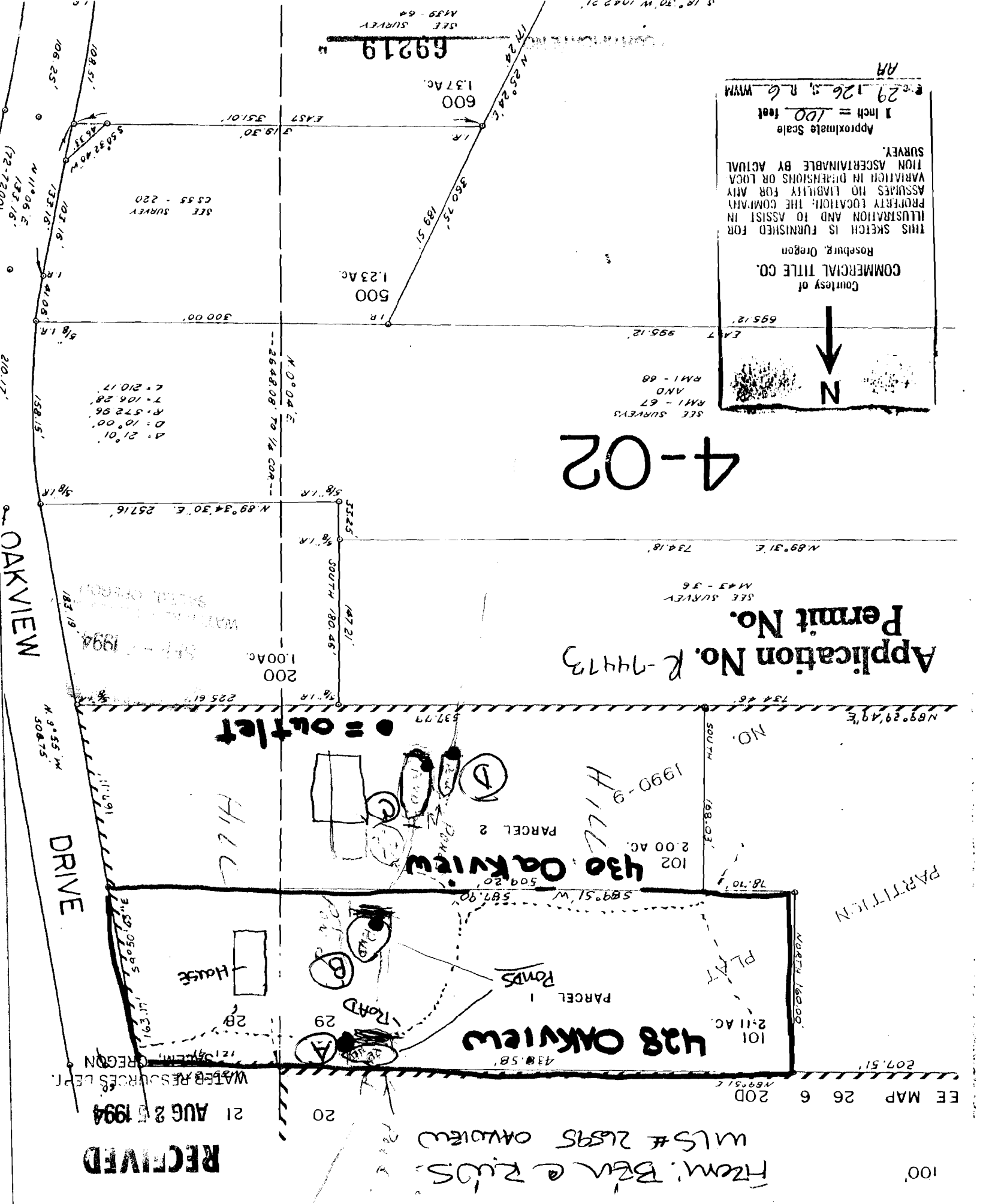
COMMERCIAL TITLE CO.
Roseburg, Oregon

Courtesy of

THIS SKETCH IS FURNISHED FOR ILLUSTRATION AND TO ASSIST IN PROPERTY LOCATION; THE COMPANY ASSUMES NO LIABILITY FOR ANY VARIATION IN DIMENSIONS OR LOCATION ASCERTAINABLE BY ACTUAL SURVEY.

Approximate Scale
1 inch = 100 feet

29 126 S. R. 6. W. 1/4
AM



OAKVIEW

DRIVE

PARTITION

69219

600
1.37 AC

500
1.23 AC

200
1.00 AC

695.12'

SEE SURVEY
C555-220

A = 21.01°
D = 10.00°
R = 572.96'
T = 106.28'
L = 210.17'

N. 0° 04' E.
2648.08 TO 1/4 COR.

N. 89° 34' 30" E. 257.16'

N. 89° 31' E. 734.18'

58.18'
5/8" I.R.
N. 72.21'
SOUTH 80.46'
5/8" I.R.

N. 89° 29' 49" E.

SOUTH

430 OAKVIEW
2.00 AC
102
509.20
587.90
589.51 W.

78.70'

NORTH 160.00'

N. 9° 55' W.
508.75'

11.491

163.17'
5.050
5.050
3.050

28

29

20

(72-7200)

210.17'

OAKVIEW

N. 9° 55' W.
508.75'

DRIVE

WATER RESOURCES DEPT.
OREGON

RECEIVED

21 AUG 25 1994

WATER RESOURCES DEPT.
OREGON

N. 9° 55' W.
508.75'

11.491

163.17'
5.050
5.050
3.050

28

29

20

(72-7200)

210.17'

OAKVIEW

N. 9° 55' W.
508.75'

DRIVE

WATER RESOURCES DEPT.
OREGON

RECEIVED

21 AUG 25 1994

WATER RESOURCES DEPT.
OREGON

N. 9° 55' W.
508.75'

11.491

163.17'
5.050
5.050
3.050

28

29

20

(72-7200)

210.17'

OAKVIEW

N. 9° 55' W.
508.75'

DRIVE

WATER RESOURCES DEPT.
OREGON

RECEIVED

21 AUG 25 1994

WATER RESOURCES DEPT.
OREGON

N. 9° 55' W.
508.75'

11.491

163.17'
5.050
5.050
3.050

28

29

20

(72-7200)

210.17'

OAKVIEW

N. 9° 55' W.
508.75'

DRIVE

WATER RESOURCES DEPT.
OREGON

RECEIVED

21 AUG 25 1994

WATER RESOURCES DEPT.
OREGON

N. 9° 55' W.
508.75'

11.491

163.17'
5.050
5.050
3.050

28

29

20

(72-7200)

210.17'

OAKVIEW

N. 9° 55' W.
508.75'

DRIVE

WATER RESOURCES DEPT.
OREGON

RECEIVED

21 AUG 25 1994

WATER RESOURCES DEPT.
OREGON

N. 9° 55' W.
508.75'

11.491

163.17'
5.050
5.050
3.050

28

29

20

(72-7200)

210.17'

OAKVIEW

N. 9° 55' W.
508.75'

DRIVE

WATER RESOURCES DEPT.
OREGON

RECEIVED

21 AUG 25 1994

WATER RESOURCES DEPT.
OREGON

N. 9° 55' W.
508.75'

11.491

163.17'
5.050
5.050
3.050

28

29

20

(72-7200)

210.17'

OAKVIEW

N. 9° 55' W.
508.75'

DRIVE

WATER RESOURCES DEPT.
OREGON

RECEIVED

21 AUG 25 1994

WATER RESOURCES DEPT.
OREGON

N. 9° 55' W.
508.75'

11.491

163.17'
5.050
5.050
3.050

28

29

20

(72-7200)

210.17'

OAKVIEW

N. 9° 55' W.
508.75'

DRIVE

WATER RESOURCES DEPT.
OREGON

RECEIVED

21 AUG 25 1994

WATER RESOURCES DEPT.
OREGON

N. 9° 55' W.
508.75'

11.491

163.17'
5.050
5.050
3.050

28

29

20

(72-7200)

210.17'

OAKVIEW

N. 9° 55' W.
508.75'

DRIVE

WATER RESOURCES DEPT.
OREGON

RECEIVED

21 AUG 25 1994

WATER RESOURCES DEPT.
OREGON

N. 9° 55' W.
508.75'

11.491

163.17'
5.050
5.050
3.050

28

29

20

(72-7200)

210.17'

OAKVIEW

N. 9° 55' W.
508.75'

DRIVE

WATER RESOURCES DEPT.
OREGON

RECEIVED

21 AUG 25 1994

WATER RESOURCES DEPT.
OREGON

N. 9° 55' W.
508.75'

11.491

163.17'
5.050
5.050
3.050

28

29

20

(72-7200)

210.17'

OAKVIEW

N. 9° 55' W.
508.75'

DRIVE

WATER RESOURCES DEPT.
OREGON

RECEIVED

21 AUG 25 1994

WATER RESOURCES DEPT.
OREGON

N. 9° 55' W.
508.75'

11.491

163.17'
5.050
5.050
3.050

28

29

20

(72-7200)

210.17'

OAKVIEW

N. 9° 55' W.
508.75'

DRIVE

WATER RESOURCES DEPT.
OREGON

RECEIVED

21 AUG 25 1994

WATER RESOURCES DEPT.
OREGON

N. 9° 55' W.
508.75'

11.491

163.17'
5.050
5.050
3.050

28

29

20

(72-7200)

210.17'

OAKVIEW

N. 9° 55' W.
508.75'

DRIVE

WATER RESOURCES DEPT.
OREGON

RECEIVED

21 AUG 25 1994

WATER RESOURCES DEPT.
OREGON

N. 9° 55' W.
508.75'

11.491

163.17'
5.050
5.050
3.050

28

29

20

(72-7200)

210.17'

OAKVIEW

N. 9° 55' W.
508.75'

DRIVE

WATER RESOURCES DEPT.
OREGON

RECEIVED

21 AUG 25 1994

WATER RESOURCES DEPT.
OREGON

N. 9° 55' W.
508.75'

11.491

163.17'
5.050
5.050
3.050

28

29

20

(72-7200)

210.17'

OAKVIEW

N. 9° 55' W.
508.75'

DRIVE

WATER RESOURCES DEPT.
OREGON

RECEIVED

21 AUG 25 1994

WATER RESOURCES DEPT.
OREGON

N. 9° 55' W.
508.75'

11.491

163.17'
5.050
5.050
3.050

28

29

20

(72-7200)

210.17'

OAKVIEW

N. 9° 55' W.
508.75'

DRIVE

WATER RESOURCES DEPT.
OREGON

RECEIVED

21 AUG 25 1994

WATER RESOURCES DEPT.
OREGON

N. 9° 55' W.
508.75'

11.491

163.17'
5.050
5.050
3.050

28

29

20

(72-72

No Final Proof Map available

No Permit Map available