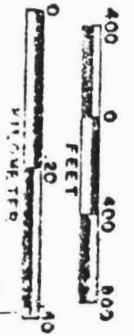


CERTIFICATE NO. 69221

Application No. R-80721
Permit No.

SCALE 1:9600



N 798,247
E 1,264,679
16 15
21 22

N 792,382
E 1,264,519
21 22
26 27

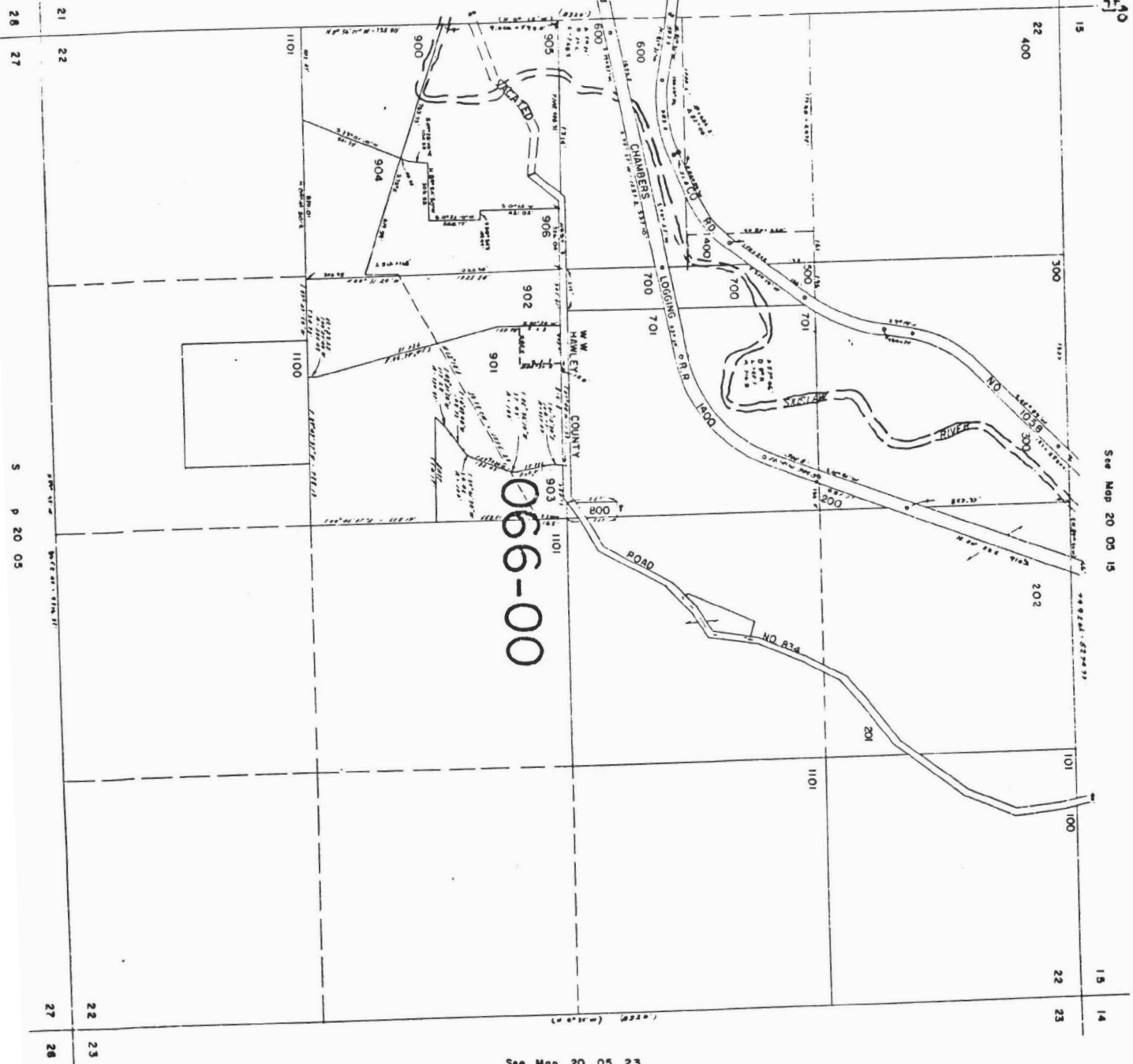
SECTION 22 20 S SW
LANE COUNTY
1"=400'

See Map 20 05 15

See Map 20 05 21

066-00

See Map 20 05 23



N 798,059
E 1,269,112
15 14
22 23

N 792,780
E 1,269,827
22 23
27 26

21 22
26 27
21 22
26 27
22 23
27 26

25-05-22

21 22 400

300 1327'

RECEIVED

DEC 30 1994

WATER RESOURCES DEPT
SALEM, OREGON

066-00

Application No. R-80721
Permit No.

CERTIFICATE NO. 69221

NO. 1058
SILUSLAW RIVER

APPROX
1.2 AC RD FT.

Pond

A 57° 46'
D 8° R
L 722.1
R 716.8

157° 00.7'

600
19.65 AC.

CHAMBERS

LOGGING RD. 1400
537.18' R.R.

066

601
12.13 AC.

066-00

W. W. HAWLEY

COU

905

906
4.84 AC.

902
907
7.34 AC.
P.I.

901

900

See Map 20 05 21

VACATED

R. PLAT

12-PD242

(8920)
S. 0° 12' W

507° 59' 14"

1324.16'

WEST

S. 0° 22' W
421.01'

526.04'

505.58'

107° 44' W - 1.33

816.8'

507° 22' 30"
184.77'
A = 337.03'

5.06° 22' 10" N
57.43'
A = 100'

23.58 CH. 1'
S. 54° 47' 40" W
108.72'
S. 48° 21' 50" W
117.28'
A = 520.87'

S. 0° 28' 40" E. 104.88' N. 89° 54' 50" W. 308.85' 240.94' S. 87° 54' 50" E.

3.72° E

116°